

Peter Ilyich Tchaikovsky  
Hamlet, Op. 67

Lento lugubre.

VIOLE.

1

2

A

B

ff

mf

f

ff

mf

f

mf

f

ff

ff

divisi

ff

ff

ff

ff

divisi

ff

VIOLE.

*p* *pp* *un poco animato*

*cresc.*

*poco* *a* *poco* *cresc.*

*C* *sempre crescendo*

*ff*

Pochissimo più mosso.

*fff* *Tempo I.* *G. P.*

*pp* *p<sup>3</sup>* *3* *3* *3* *mp*

*mf* *f* *cresc.*

*Andante non troppo* *un poco string.* *Moderato.*

*fff* *fff*

*fff*

VIOLE.

Allegro vivace.

1

ff f ff

D

ffp

This system contains the first three staves of the 'Allegro vivace' section. The first staff begins with a first ending bracket labeled '1'. The music is in 3/4 time with a key signature of two flats. Dynamics include fortissimo (ff), piano (p), and fortissimo-piano (ffp). A section marker 'D' is placed above the third staff.

Poco meno allegro.

mf f ff

E

mf ff

Più mosso.

fff

This system contains the fourth and fifth staves of the 'Poco meno allegro' section. Dynamics include mezzo-forte (mf), forte (f), fortissimo (ff), and fortissimo-forte (fff). A section marker 'E' is placed above the fifth staff. The tempo marking 'Più mosso.' is placed above the sixth staff.

fff

mf mp

4 1

G.P.

This system contains the sixth through ninth staves of the 'Più mosso' section. The music features a triplet of eighth notes in the sixth staff. Dynamics include fortissimo-forte (fff), mezzo-forte (mf), and mezzo-piano (mp). The section concludes with a first ending bracket labeled '4 1' and the initials 'G.P.' at the bottom right.

VIOLE.

1 pizz. 3 3 F 7 pizz. 1

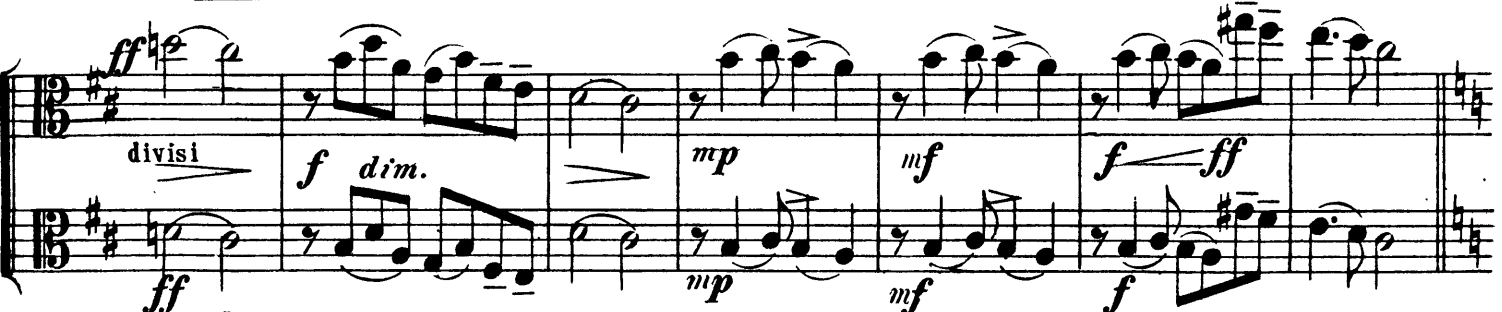


Moderato con moto.

arco



divisi



Animando poco a poco.

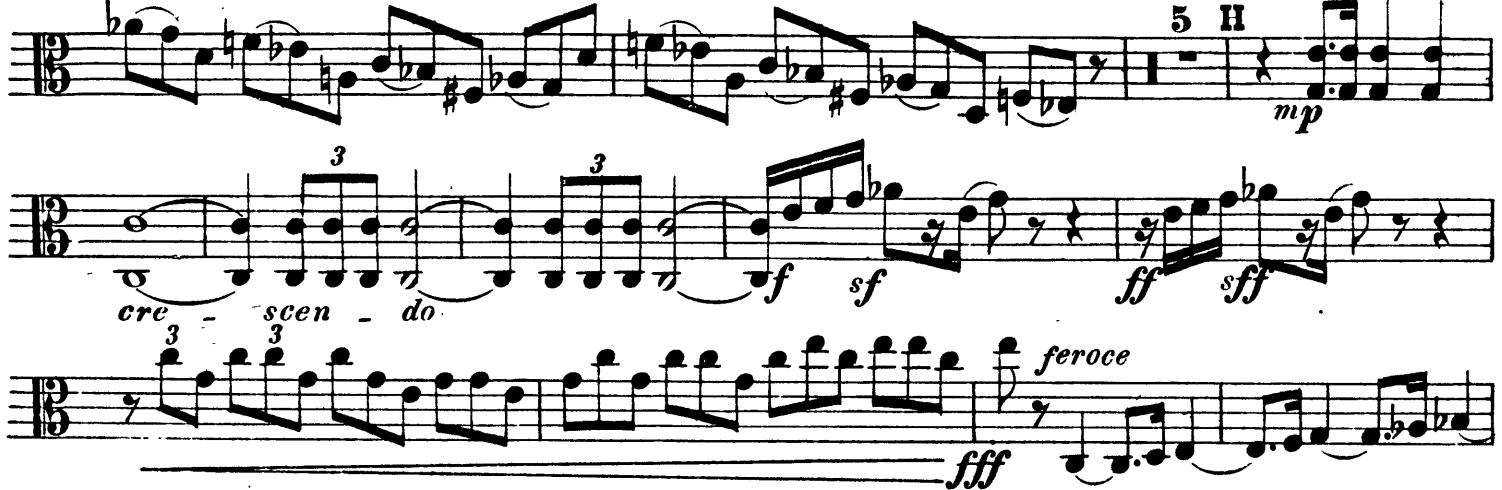


Allegro vivace.

3 3 3 5 H

cre - scen - do

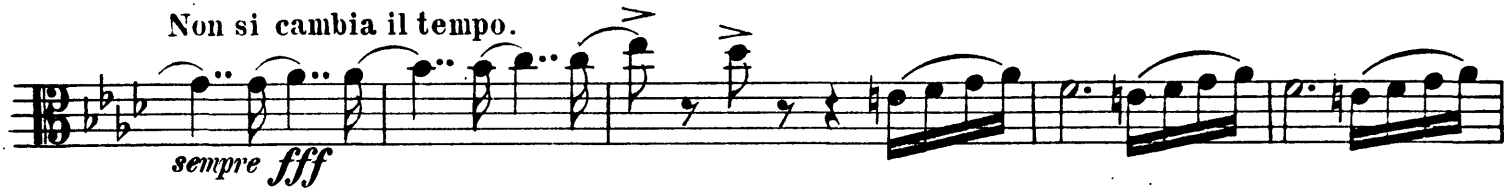
feroce



VIOLE.



Non si cambia il tempo.



*sempre fff*



*fff*



*ff*



*f*

*mf*



*mp*

*p*

VIOLE.

*p* *mp* *mf* *mp* *mf* *p* *mf* *mp* *mf* *p* *mp* *p* *mf* *mp* *pp* *pppp*

mi - nu - en - do

Moderato con moto, come sopra.

*p* *mf* *p*

**VIOLE.**

*mf* *p* *mf*

*divisi ff* *f dim.* *mp* *mf* *f ff*

*Poco animato.* *ff* *f* *mp* *mf* *f ff*

*Allegro ma non troppo.*

*ff* *sempre ff*

*sempre marcatissimo* *e*

*fff*

*Allegro vivace. 5*

*stringendo*

VIOLE.

1 0 4

*p* *mf* *cresc.* *fff*

Poco più animato.

*p* *fff*

divisi 2 *fff* 1 2 *mettete 14 sordini*

Grave.  
Violini.

con sordini *f* 1 (piangendo) (плачѣбно) *mf* 3 *Fino.*