

Peter Ilyich Tchaikovsky
Symphony No. 4 in F Minor, Op. 36

Viola

I

Fl. u. Trp.
Andante sostenuto

10

ff

Moderato con anima
(♩ = In movimento di Valse)

1 3 *riten.* 2 *p*

f *mf* *p*

poco cresc.

f *mf*

cresc.

f

B

1

mf *p*

Viola

mf *cresc.* *f*

ff

p

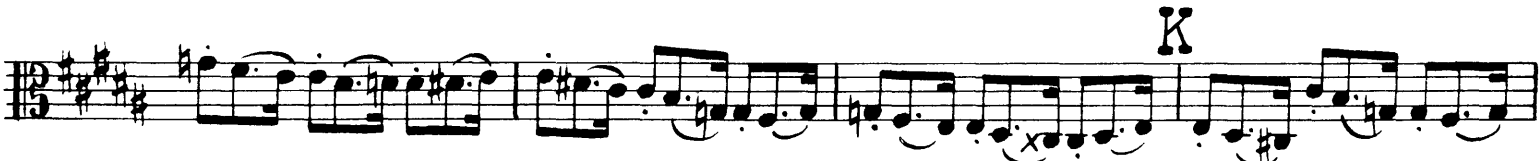
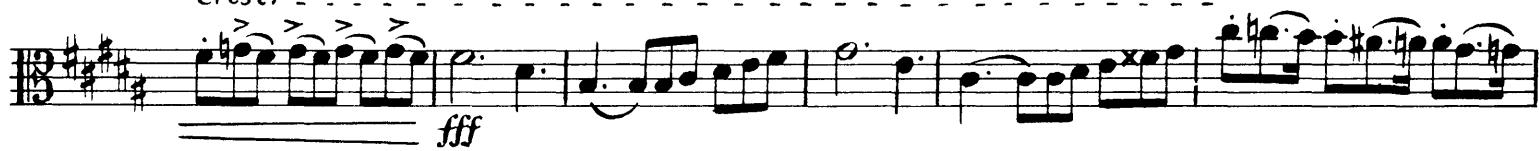
ritardando

Meno mosso *ritardando*

dim.

Moderato assai, quasi Andante

pp *sempre pp*



Viola

L
ff *p* *mf* *p*

M 1 4
mf *p*

N 1
mf *f* *sf* *p*

4
mf *sf* *sf*

0
mf *cresc.* *f*

simile *ff*

P *fff* *div.* *unis.*

fff *div.* *unis.*

Q

fff

rallentando poco a poco al - - -

mf dim. p

Moderato assai, quasi Andante

pp

R

Poco sostenuto il tempo precedente

10 *Klar. 1*

Viola

pizz. **S** 1 *arco*
p *mf*

1

T *sempre stringendo al* - - - - -
cresc.

Allegro con anima
f cresc. *ff*

U 8
p *p*

1 2

1 *p*

1 *p poco a poco crescendo*

fff *Più mosso. Allegro vivo*

Viola

II

Andantino in modo di canzona

1 *pizz.*
p

19 *Viol. 1* **A**
sf *mf*

2 3
sf *mf cresc.* *f*

ff

dim.

B 1
mf *p cantabile*

C 2
sf *mf*

2 5
sf *f*

6 1 *Più mosso*
mf *mf* *f*

f

ff

f *mf dim.* *p*

dim.

rit. **Tempo I** *pizz.* *p*

2 *arco* *>* *2* *8*

mf *2* *1* *1* *29* *Fag. 1* *pizz.* *pp*

arco *pp*

3 *2* *>* *1* *pizz.* *1* *p* *pp* *ppp*

Viola

III. SCHERZO

Pizzicato ostinato

Allegro

pizzicato sempre

p

p

p

p

p

p

crescendo

mf *p*

p

f

dim.

p *p* *f* *f* *f* *dim.* *p* *pp* *Meno mosso* *f* *Tempo I*

C D F G

1 2 1 3 1 2

p

Viola

p

p

p

p

p

cresc.

mf *p*

p *f*

dim. *p*

p

The musical score for the Viola part on page 13 of Tchaikovsky's Symphony No. 4 in F Minor, Op. 36, consists of 12 staves. The music is written in 3/4 time and features a variety of dynamics and articulations. The first staff begins with a forte (*f*) dynamic, followed by a piano (*p*) dynamic, and then another forte (*f*) dynamic. The second staff continues with a forte (*f*) dynamic. The third staff features a piano (*p*) dynamic. The fourth staff starts with a *dim.* (diminuendo) marking and a piano (*p*) dynamic. The fifth staff includes a *dim.* marking, a *pp* (pianissimo) dynamic, and first fingerings (1). The sixth staff has a *pp* dynamic, first fingerings (1), and a *p* dynamic. The seventh staff features a *più f* (pizzicato forte) dynamic, second fingerings (2), a *mf* (mezzo-forte) dynamic, and first fingerings (1). The eighth staff has a *f* (forte) dynamic. The ninth staff includes a *cresc.* (crescendo) marking. The tenth staff features a *ff* (fortissimo) dynamic and first fingerings (1, 2, 3, 4, 5, 6). The eleventh staff has a *f* dynamic and first fingerings (7, 8, 3). The twelfth staff includes a *p* dynamic, first fingerings (3, 1, 1), and a *pp* dynamic, ending with a second fingering (2).

Viola

IV. FINALE

Allegro con fuoco

ff

mf

cresc.

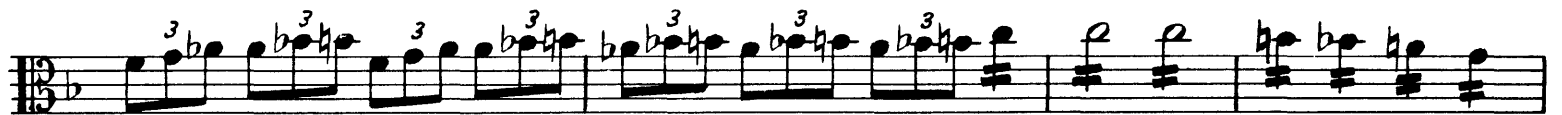
cresc.

f

ff

ff

A



Viola

ff

pp

f

ff

ff

D

ff

ff

fff

E

mf

F 1

Viola

mf *f* *f*

ff

Andante

fff

f *mf* *dim.* *p* *riten.*

Tempo I

p *mf*

f

ff

fff

The image displays a page of musical notation for the Viola part of Tchaikovsky's Symphony No. 4 in F Minor, Op. 36. The score is written in F minor and 3/4 time. It consists of ten staves of music. The first staff begins with a treble clef and a key signature of one flat. The notation includes various rhythmic values, including eighth and sixteenth notes, and rests. A dynamic marking of *sempre fff* is present in the third staff. A hairpin symbol is used above the first staff. The score concludes with a final double bar line and a fermata over the last note.