

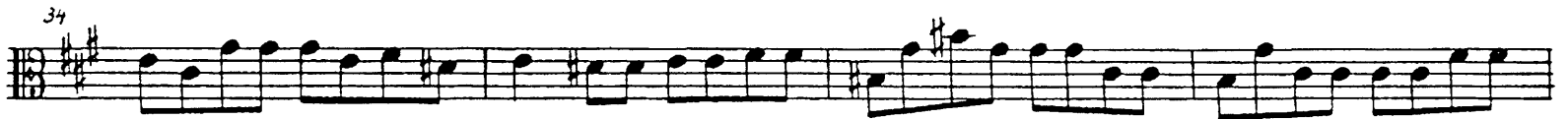
George Frideric Handel Julius Caesar

Viola

Overture



Viola

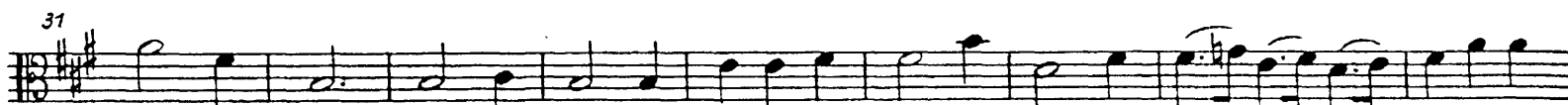


Erster Akt

1. Szene

Coro

Non troppo allegro



Aria <Caesar>

Allegro



Viola

30 1

f *p*

36

42 *Adagio*
Caesar

ih - re Pal - men dem Sie - ger

48 *Tempo I*

f

- Recit.: tacet*
- 2. Szene Recit.: tacet*
- 3. Szene Recit.: tacet*
- Aria <Caesar>: tacet*
- 4. Szene Recit.: tacet*

Sextus

oh - ne dei - nen Gat - ten, ich oh - ne Ka - ter?

Aria <Cornelia >
Largo

10

19

28

36

1. 2. *Fine*

44

53

62

Da capo

Recit.: tacet

Aria <Sextus>: tacet

5. Szene Recit.: tacet

Cleopatra Bassi

ern - te der Lie - be sü - ße Fruch - tel

Aria <Cleopatra>

Allegro, mà non troppo

6

poco più f f Viol.

17

24

43

7. 2. Fine

47

Cleop. dei - nes Win - kes schon; dort labt dein Herz sich noch. Da capo

Viola

6. Szene Recit. tacet

Ptolem. *Bassi*

als ein sieg - rei - ches Schwert mir mei - nen Thron.

Aria <Ptolemäus>

Allegro, e staccato

9 1

17 6 *Viol. I* *Viol. II*

30 1 *f*

38 1

46

54 3 *Adagio* *Ptolem.* *Tempo I*

des Lan - des Frie - den. *f*

63 7. 2

Fine

69 1 1 2

80 4 *Viol.* *Ptolem.*

hier schmie - den.

Da capo

7. Szene Recit. accomp.

Largo

5 Caesar

See - le des gro-ßen Pom - pe - jus die du für uns un - sicht - bar sei - ne

9

A - sche um - schwebst; nur Schat - ten war'n dei - ne Sie - ge, Schatten war'n dei - ne Eh - ren, du selbst bist

13

Schatten. Ja, so schwin - det am En - de des Menschen Grü - ße. Gestern hast du le - bend noch die Welt er -

17

o - bert, heu - te umschließt die Ur - ne schon dei - ne A - sche. Ach, weh uns Menschen! Wir neh - men unsren

21

An - fang im Stau - be und en - den im Stei - ne. E - len - des Le - ben! Gar

25

kurz ist dein Be - ste - hen ein Hauch er - schafft dich, ein A - tem - zug läßt dich ver - gehn.

Viola

Recit.: tacet

Aria <Caesar>

Allegro 21

Viol. *f*

28

1. 2.

6 *Viol. p*

Fine *Dal Segno*

Recit.: tacet

Cleopatra Bassi

9

Vor - fah - ren Thron in Gra - de ge - ben.

Aria <Cleopatra>

Allegro

2

11

3

23 *Viol. p*

5 *Viol. f*

36

2

10 *Viol. Cleop.*

56

19 *Viol. p*

83

8 *Viol. Adagio Cleop. Tempo I*

100

2

3

1. 2.

Fine

114

22 *Cleop.*

daß die Wun - de bleibt für's Le - *Da Capo*
ben.

Recit.: tacet

8. Szene *tacet*

Arioso <Cornelia>: *tacet*

Recit.: *tacet*

Aria <Sextus>: *tacet*

Recit.: *tacet*

Aria <Cleopatra>: *tacet*

9. Szene *Recit.:* *tacet*

Caesar *Bassi*

Falsch ist sein Ant - litz; er wird Ver - rat be - rei - ten

Aria <Caesar>

Andante, e piano

6

11

16

21

27

32

37

42 1. 2.

Fine

46

Da Capo

10

Viola

10. Szene: tacet

11. Szene Recit.: tacet

Aria <Achillas>: tacet

Recit.: tacet

Cornelia *Bassi*

Kuß will ich zum Ab-schied dir ge-ben.

Duetto <Cornelia - Sextus>

Largo

p *un poco più f* *f* *p*

6

pp

11

16

21

26

(f) *p*

31

Fine p

36

Sextus *f* *Tempo I*

Dal Segno

Ende des ersten Aktes

Zweiter Akt

1. Szene Recit.: tacet

2. Szene Recit.: tacet

Nirenus *Bassi*

Das Herz ist wohl von Stein, daß sie nicht rührt.

Detailed description: This block contains a single staff of music in bass clef with a common time signature (C). The music is in a recitative style, featuring a series of eighth and sixteenth notes. The lyrics are written below the staff.

Sinfonia

p *f* *p* *f*

Detailed description: This block contains a single staff of music in treble clef with a 3/4 time signature. The music is a symphony (Sinfonia) consisting of a sequence of eighth and sixteenth notes. Dynamic markings *p* and *f* are placed below the staff.

Recit.: tacet

Nirenus *Bassi*

Das Herz ist wohl von Stein, daß sie nicht rührt.

Detailed description: This block contains a single staff of music in bass clef with a common time signature (C). The music is in a recitative style, featuring a series of eighth and sixteenth notes. The lyrics are written below the staff.

I. Orch.

II. Orch.

Detailed description: This block contains two staves of music in treble clef with a 3/4 time signature. The top staff is labeled *I. Orch.* and the bottom staff is labeled *II. Orch.*. Both staves show musical notation for the first and second orchestras.

6

Detailed description: This block contains two staves of music in treble clef with a 3/4 time signature. The top staff shows musical notation for the first orchestra, and the bottom staff shows musical notation for the second orchestra. The measure number 6 is indicated at the beginning.

11

Detailed description: This block contains two staves of music in treble clef with a 3/4 time signature. The top staff shows musical notation for the first orchestra, and the bottom staff shows musical notation for the second orchestra. The measure number 11 is indicated at the beginning.

Viola

Recit.: tacet

Caesar

um - flos - sen je - mals zur Er - de nie - der

Aria <Cleopatra>

I. Orch. Largo

II. Orch.

3 4 1

17

27

1. 2.

Fine

36

Recit.: tacet

Caesar *Bassi*

Ge - sän - ge als die - se Wei - se *Aria da capo*

Recit.: tacet

Caesar Bassi
der Lie - be Schmer - zen

Aria <Caesar>

Allegro

Solo - Viol.

Adagio Tempo I

19 2 12 Solo - Viol 1

37 f 3

Adagio Tempo I

64 p 2 1

71 1. 2. Fine

75 20 Viol. Caesar Adagio
fa o-gni co - re in - ra - mo - rar
Da Capo

Viola

14

3. Szene Ariosa <Cornelia>: tacet

Recit.: tacet

4. Szene Recit.: tacet

Aria <Achillas>: tacet

Recit.: tacet

Ptolem. Bassi

Bit - ten er - reicht was ich be - gehr - te.

Aria <Ptolemäus>

Allegro, e staccato

8 27 Viol. I, II 2

40 1. 2. Fine

44 11 Ptolem. Bassi

Kost der Bos - heit vol - les Maß Da Capo

5. Szene Recit.: tacet

6. Szene Recit.: tacet

Cornelia Bassi

die gu - te Sa - che schüt - zen

Aria <Cornelia>

Andante

10 26 Fl. p f p f

43 f p f p f

52 1. 2. Fine

61

72 Cornelia

lu - tea liu pro - met - te. f p f p Dal Segno

Recit.: *tacet*

Sextus *Bassi*
Doch wenn ich fal - len soll muß je - ner jetzt ster - ben.

Aria <Sextus>

Andante

8
15 *p*
26 *Viol.* *f* 1
34 *Viol.* 8 1 *f*
49 17
73 7. 12.
80 *Viol.* 4
91 3 2 *Dal Segno*
Fine

Viola

7. Szene Recit.: tacet

Aria <Cleopatra>: tacet

Recit.: tacet

8. Szene Recit.: tacet

Aria <Caesar>: tacet

Allegro *Chor*

Recit. accomp.

Cleopatra

Was hör ich, ihr Göt-ter? So muß Kle-o-pa-tra ster-ben. Du fei-ge

5

See-le, was re-dest du? Geh, schweige. Im Kampf will ich mich rä-chen. Mir leiha-da-zu die Göt-ter

10

von Bel-lo-na das Ant-litz, den Mut von Mars. Be-wahrt mir, ich fleh'euch

14

an, ihr Him-mels-len-ker, o be-wahrt mir den Freund! Er ist mein gan-zes Seh-nen, das Trost und Glück ver-eint.

Aria <Cleopatra>

Largo

f *p* *f* *p* *f*

p

f *Fine*

1 *2*

1 *2*

1

1

1 *Dal Segno*

9. Szene Recit.: *tacet*

Arioso <Ptolemäus>: *tacet*

Recit.: *tacet*

10. Szene Recit.: *tacet*

11. Szene Recit.: tacet

Sextus *Bassi*

des Va - ters Mör - der fällt mit blut - gen Wun - den.

Aria «Sextus»

Allegro, e staccato

5 2

16 45

67 *Sextus* *Tempo I*
Ob.

73 2

81 1

1. 2.

Fine *p*

87 2

95

102 *Sextus*

ver - söh - nen kann. *Da Capo*
Ende des zweiten Aktes

Viola
Dritter Akt

1. Szene Recit.: tacet

Aria <Achillas>: tacet

Musical notation for the first scene recitative, marked "tacet". The notation is on a single staff in treble clef with a key signature of one sharp (F#) and a 3/8 time signature. It begins with a whole rest, followed by a melodic line starting at measure 6. The piece concludes with a fermata and the word "Fine".

2. Szene Sinfonia

Musical notation for the second scene symphony, measures 1-4. The notation is on a single staff in treble clef with a key signature of one sharp (F#) and a common time signature (C). It features a rhythmic pattern of eighth and sixteenth notes.

Musical notation for the second scene symphony, measures 5-9. The notation is on a single staff in treble clef with a key signature of one sharp (F#) and a common time signature (C). It continues the rhythmic pattern from the previous section.

Musical notation for the second scene symphony, measures 10-14. The notation is on a single staff in treble clef with a key signature of one sharp (F#) and a common time signature (C). It continues the rhythmic pattern from the previous section.

Musical notation for the second scene symphony, measures 15-19. The notation is on a single staff in treble clef with a key signature of one sharp (F#) and a common time signature (C). It concludes the symphony with a final cadence.

Recit.: tacet

Aria <Ptolemäus>: tacet

3. Szene Recit.: tacet

Aria <Cleopatra>: tacet

Musical notation for the third scene recitative, marked "tacet". The notation is on a single staff in treble clef with a key signature of one sharp (F#) and a 3/8 time signature. It begins with a whole rest, followed by a melodic line starting at measure 6. The piece concludes with a fermata and the word "Fine".

4. Szene Recit. accomp. <Caesar>

Andante, e piano

Musical notation for the fourth scene recitative with accompaniment, measures 1-7. The notation is on a single staff in treble clef with a key signature of one flat (Bb) and a 3/8 time signature. It features a melodic line with a piano accompaniment of eighth notes.

Musical notation for the fourth scene recitative with accompaniment, measures 8-13. The notation is on a single staff in treble clef with a key signature of one flat (Bb) and a 3/8 time signature. It continues the melodic and accompanimental lines from the previous section.

Musical notation for the fourth scene recitative with accompaniment, measures 14-19. The notation is on a single staff in treble clef with a key signature of one flat (Bb) and a 3/8 time signature. It concludes the scene with a final cadence.

23 *Caesar*

aus den tük - ki - schen Wo - gen hat mich ein gu - tes Schicksal aufs Land zu - rück - ge - tra - gen. Hier spin - nen nun die

27

Par - zen noch wei - ter fort am fa - den mei - nes Le - bens. Doch was wird nun? Wo -

31

hin soll ich mich wen - den? Wird mir wohl je - mand hel - fen? Wo sind mei - ne Le - gi - o - nen

35

mit de - nen ich so man - chen Sieg er - run - gen? Ein - sam am ver -

39

Adagio

lass' - nen Stran - de irt der Herrscher der Er - de im Fein - des - lan - de Ze - - phir!

f *p*

Aria < Caesar >

43 *Andante, e piano*

Recit. accomp.

Viola

131 2

138 1

146 2

154 1

161

168

176 1 Adagio 1

184 *Tempo I*

Recit.: tacet

5. Szene Recit.: tacet

Aria <Caesar>: tacet

6. Szene Recit.: tacet

Aria <Sextus>: tacet

Allegro

184 185 186 187 188

Viol.

Fine

7. Szene

Recit.: accomp. <Cleopatra>

Adagio, e piano



11 Cleopatra

Ja, mei-ne treu-en Mädchen, man will uns tren-nen. Je-doch ihr weint um-sonst, wir müs-sen scheiden.

16

Bar-ba-risch ist der Bru-der: er raubt mir erst die Herrschaft, dann nimmt er euch mir, zu-letzt nimmt er mein

20

Le-ben.

p *f*

23

Lär-men im-mer noch Waf-fen? Ach ja!

p

26

wir müs-sen scheiden; und bald seht ihr Kle-o-pa-tra den Tod er-lei-den.

Recit.: tacet

Aria <Cleopatra>: tacet

Viola

8. *Szene Recit.: tacet*

9. *Szene Recit.: tacet*

Aria <Cornelia>: tacet

Allegro

Viol.

Fine

Letzte Szene

A. Sinfonia

5

pp

10

f

15

p

21

7. 2. Adagio 2 Corni Fine Da Capo

B. La Marche

8

15

22

Viola

Recit.: tacet

Duetto <Cleopatra - Caesar>: tacet

Recit.: tacet

Caesar Bassi
sich dem gro-ßen Na - men Roms von Pol zu Pol.

Coro

Viola

44 7 10 Ob.

64

58

75

81

87

92

98

103

Ende der Oper