

Bedrich Smetana  
Má Vlast No. 3: Sarka

Cello.I.

Allo con fuoco, ma non agitato..

The musical score for Cello I consists of ten staves of music. The first staff begins with a dynamic marking of *ff* and a *sfz* marking. The second staff includes a *poco rit.* marking and a *rit.* marking. The third staff features a *cresc.* marking. The fourth staff has a *sfz* marking. The fifth staff includes a *cres* marking and a *ff* marking. The sixth staff has a *cres* marking and a *ff* marking. The seventh staff includes a *ritard.* marking and a *dim.* marking. The eighth staff has a *cres* marking and a *dim.* marking. The ninth staff includes a *ff* marking and a *sfz* marking. The tenth staff has a *ff* marking and a *sfz* marking. The score also includes various performance markings such as accents, slurs, and hairpins.

# Cello I.

*Più moderato assai.*

The musical score for Cello I consists of ten staves of music. The first staff begins with a dynamic marking of *sf* and contains several triplet markings. The second staff continues the melodic line. The third staff includes a *cresc.* marking and a dynamic of *sf*. The fourth staff features a *p* marking and a *più. f* marking. The fifth staff has a *p* marking. The sixth staff starts with a *f* marking and a *p* marking. The seventh staff begins with a *più. p* marking. The eighth staff has a *p* marking. The ninth staff features a *f* marking. The tenth staff concludes the page with a *f* marking. The music is written in bass clef with a common time signature.

Cello I.

*p*

*Solo*

*molto* *cres* *cen* *do* *f* *espressivo.*

*f* *ritard.*

*Solo* *f* *f* *f* *dimin et rall:*

*Moderato ma con calore.*

*f* *espressivo.*

*sfz*

# Cello: I.

*p* *accel* *lerando* *ed* *cresc.*

*crescendo* *pp*

*sf cresc.* *ff* *sfz*

*sfz* *sf* *sf cresc*

*cendo* *ff* *sf dimin* *p ritard.*

*a tempo*

*ff* *sf dimin* *p*

*poco rall*

*f* *sf dimin* *po*

*Adagio.* *Moderato.*

*piu rall* *p* *ff*

*sf* *sf*

*sf* *sf* *sf*

# Cello I.

*sf marcatis.* *sf* *f*

*marcatiss.* *sfz*

*marcato* *sf*

*sfz*

*sf* *ff* *sfz*

*sf*

*cresc* *f*

*mar ca tiss.* *sfz*

*sf* *sf*

*sfz*

# Cello I.

*crescendo.*

*sfz sfz sfz sfz*

*dimin. sempre dimin.*

*pp sempre diminuendo.*

*pp*

*dimin. possibile*

*dimin. al pp*

Smetana — Má Vlast No. 3: Sarka

The Orchestra Musician's  
CD-ROM LIBRARY™

Cello I.



Molto vivo.



# Cello I.

The musical score for Cello I consists of ten staves of music. The notation includes various rhythmic values, accidentals, and dynamic markings. The first staff begins with a series of eighth notes. The second staff continues with similar rhythmic patterns. The third staff features a dynamic marking of *sf*. The fourth staff includes a *marcato* marking and a *sf* dynamic. The fifth staff has a *più f* marking. The sixth staff contains a *ffz* marking and a *sf* dynamic. The seventh staff features a *f* dynamic and a *ff* dynamic. The eighth staff is marked *Più vivo.* and includes a *ff* dynamic and a *fz* dynamic. The ninth and tenth staves continue the melodic line with various articulations and dynamics.



# Cello I.

The musical score for Cello I consists of ten staves of music. The notation includes various rhythmic values, accidentals, and dynamic markings. Key performance instructions include *Solo.*, *sfz*, *ff*, *f*, *cresc*, and *6. 6.*. The score features several slurs, accents, and phrasing marks. The first staff begins with a series of eighth notes. The second staff has a *sfz* marking. The third staff is marked *Solo.* and includes *ff* and *f* dynamics. The fourth staff has *sfz* and *f* markings. The fifth staff is marked *Solo.* and includes *f* and *sf* dynamics. The sixth staff has *sf* and *fff* markings. The seventh staff includes *ff* and *6. 6.* markings. The eighth staff has *cresc*, *sfz*, and *ff* markings. The ninth staff features a series of chords. The tenth staff concludes with *sf* markings.

Bedrich Smetana  
Má Vlast No. 3: Sarka

Cello.II.

Allo con fuoco, ma non agitato .

un poco rit.

rit. cresc.

cres . . ce . . do

rit. dim. p

cres . . ce . . do

# Cello II.

*Più moderato assai.*

The musical score for Cello II consists of ten staves of music. The first staff begins with a dynamic of *f* and a *pizz.* instruction. The second staff continues the melodic line. The third staff features a *cresc.* instruction with a wedge-shaped dynamic marking, followed by a *p* dynamic. The fourth staff includes a *arco.* instruction and a *più f.* dynamic. The fifth staff shows a *p* dynamic with a wedge-shaped marking, followed by a *f.* dynamic. The sixth staff starts with a *p* dynamic and a *pizz.* instruction. The seventh staff continues the melodic line. The eighth staff begins with a *p* dynamic and a *arco.* instruction. The ninth staff starts with a *f* dynamic and a wedge-shaped marking. The tenth and final staff begins with a *pizz.* instruction and a *p* dynamic.

# Cello II.



*Molto. cresc.*



*rit.*



*Moderato ma con calore.  
pizzicato.*



*poco accelerando*

*ed affetuoso*

*cres*

*p*

*sfz*

*dimin*

*rit.*



*a Tempo.*

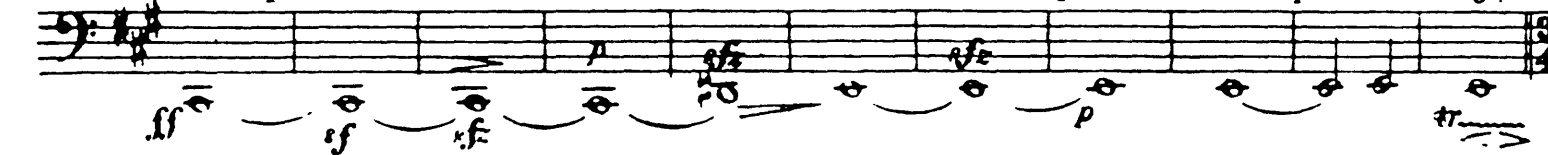
*dimin*

*crescendo*

*dimin. poco*

*rall. più rall.*

*Adagio.*



# Cello II.

Moderato.

*p*

*f*

*sf*

*marcatissimo.*

*ff*

*marcatissimo.*

*loco*

*marcatissimo.*

*sfz*

*sfz*

*sfz*

*sfz*

*f*

*sfz*

*sfz*

*f*

*crescendo*

*marcatissimo.*

*sf*

# Cello II

*f* *f* *cresc.* *loco* *f*

*fz* *fz* *fz*

*sempre dimin* 1 2 3 4 5 6 7 8 9

*sempre dimin* 1 2 3 4 5 6 7 8 9 10 11 12 13 14

*p* *possibile* *ppp* *Molto vivo.* *ppp*

1 2 3 4

*pp* *sempre* *pp*

*sempre*

18 19 20 21 22 23 24 25 26

*pp* *poco* *cres. cen.*

*do* *fz* *f* *f* *cresc.*

*ffz* *f*

*marcato* *f*

*piu f*

# Cello II.

The musical score for Cello II consists of ten staves of music. The notation includes various rhythmic values, accidentals, and dynamic markings. The first staff begins with a forte (*f*) dynamic and features several triplet markings. The second staff continues with similar rhythmic patterns and includes a *f* dynamic marking. The third staff is marked *1000 Più vivo.* and features a *ff* dynamic marking with sixteenth-note patterns. The fourth staff continues with sixteenth-note patterns. The fifth staff includes a *f* dynamic marking and a second ending bracket. The sixth staff features a *ff* dynamic marking and a first ending bracket. The seventh staff includes a *f* dynamic marking and a first ending bracket. The eighth staff is marked *1000* and features a *ff* dynamic marking with sixteenth-note patterns. The ninth staff continues with sixteenth-note patterns and a *ff* dynamic marking. The tenth staff concludes the piece with a *f* dynamic marking and a final cadence.