

Domenico Cimarosa
Il Matrimonio Segreto, Overture

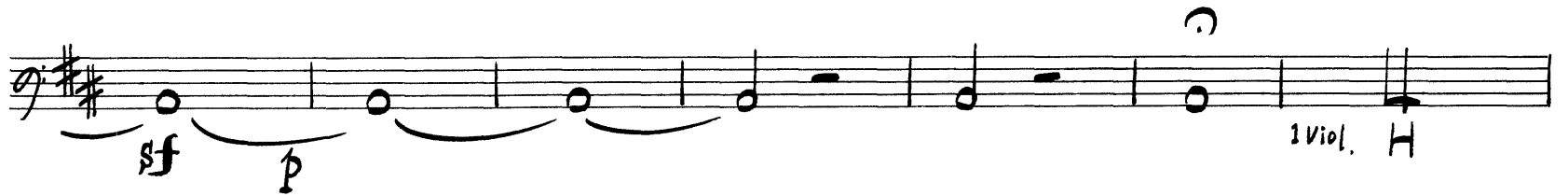
Cello

Largo.

Allegro molto.

The musical score for the Cello part of the Overture to *Il Matrimonio Segreto* by Domenico Cimarosa is presented on a single page. The score is in G major (one sharp) and 3/4 time. It begins with a *Largo* tempo marking and a dynamic of *f* (forte). The first staff shows the initial notes, with a *Viol.* (Violin) part indicated below. The second staff is marked *II Viol.* (Second Violin). The tempo changes to *Allegro molto* in the third staff. The score consists of eight staves of music, featuring various rhythmic patterns, including eighth and sixteenth notes, and rests. Dynamics range from *f* to *p* (piano). The piece concludes with a series of sixteenth-note runs in the final staff.

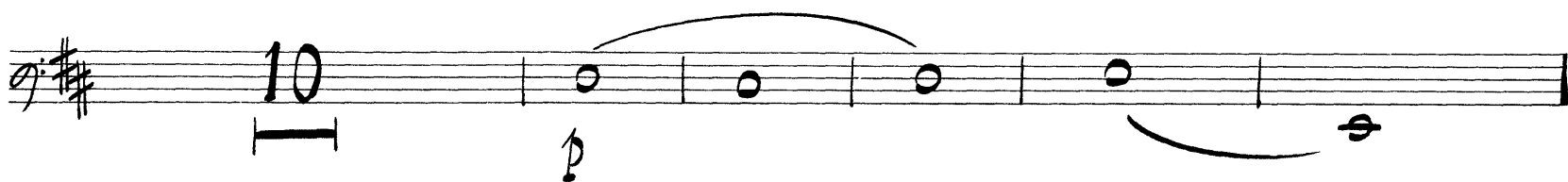
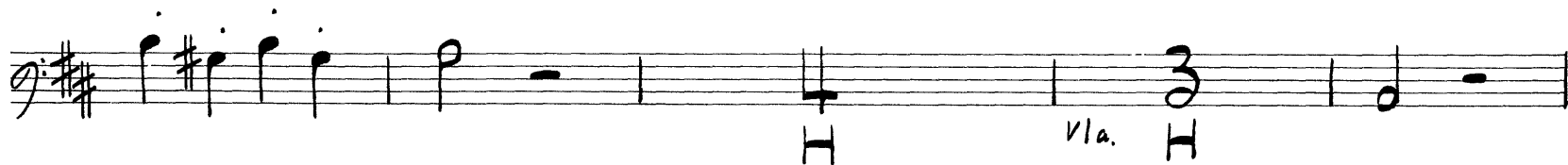
CELLO



CELLO

4

181



CELLO

The musical score for Cello is written in G major (one sharp) and 3/4 time. It consists of ten staves of music. The first staff begins with a treble clef and a key signature of one sharp (F#). The music features several slurs and accents, with dynamic markings of *sf* (sforzando) appearing on the second and fourth measures. The second staff continues with slurs and accents, and includes a *cresc.* (crescendo) marking at the end. The third staff shows a change in dynamics, with a *f* (forte) marking followed by a *p* (piano) marking. The fourth staff features a long slur over a series of notes. The fifth staff begins with a *f* (forte) marking. The sixth staff includes a 4-measure rest and an 8-measure rest, both marked with a repeat sign (//). The seventh staff starts with a *p* (piano) marking and includes a *legato.* instruction. The eighth staff continues with slurs and rests. The ninth staff features a *p* (piano) marking and rests. The tenth staff concludes with a 3-measure rest and a *T.S.* (Tutti Segno) instruction.

6

CELLO

(2) 

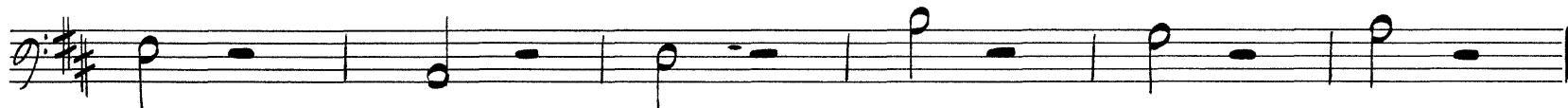










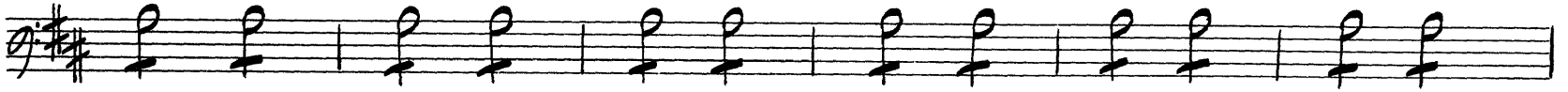








CELLO



V.S.

CELLO

(51)

p *sf* *sf* *sf* *sf*

sf *cresc.* *p*

f *f* *cresc.*

ff