

Peter Ilyich Tchaikovsky
Serenade for Strings, Op. 48

Violine I

I. Pezzo in forma di Sonatina

Andante non troppo

f *sempre marcatissimo* *ff* *f* *f*

9 *ff* *fff* *f* *ff*

18 *f*

27 *mf* *p dim.* *pp*

A Allegro moderato

37 *f*

45 *cresc.* *ff*

53 **B** *p* *cresc. al* *ff*

60 *p* *cresc. al*

67 *ff* *ff*

74 **C** *f* *ff*

Tchaikovsky — Serenade in C for Strings, Op. 48

The Orchestra Musician's
CD-ROM LIBRARY™

2

Violino I

81 *f* *ff* *fff*

86

91 **D** *p*

95 *p*

99 *pp*

103 *pp* **E** *poco cresc.*

107 *p*

112 *cresc.* *più f*

116 *mf* *cresc.* *f*

119 **F** *ff*

123 *ff*

127 *ff*

Detailed description: This page of a musical score for Violino I contains measures 81 through 127. The music is written on a single staff in treble clef with a key signature of one sharp (F#). The score begins with measures 81-85, featuring a melodic line with dynamic markings of *f*, *ff*, and *fff*. Measure 86 is a whole rest. Measures 91-94 are marked *p* and contain a dense sixteenth-note texture. Measure 95 is also marked *p*. Measures 99-102 are marked *pp*. Measure 103 is marked *pp* and includes a boxed letter 'E'. Measures 104-106 are marked *poco cresc.*. Measure 107 is marked *p*. Measure 112 is marked *cresc.* and *più f*. Measure 116 is marked *mf*, *cresc.*, and *f*. Measure 119 is marked *ff* and includes a boxed letter 'F'. Measures 123-126 are marked *ff*. Measure 127 is marked *ff* and features a series of accents over the notes.

131  *sempre ff*

135  **G**

139  *div. p cresc. poco a poco*
p cresc. poco a poco

143 *unis.*  *ff*

147 

152 

156 **H** 

163  *cresc.* *ff*

170  *p* *cresc. al*

177  *ff* *p* *cresc. al*

184  *ff* *ff*

Tchaikovsky — Serenade in C for Strings, Op. 48

The Orchestra Musician's
CD-ROM LIBRARY™

4

Violino I

190

196

202

207

211

215

219

223

227

232

236

239

I

K

L

M

f

ff

pp

poco cresc.

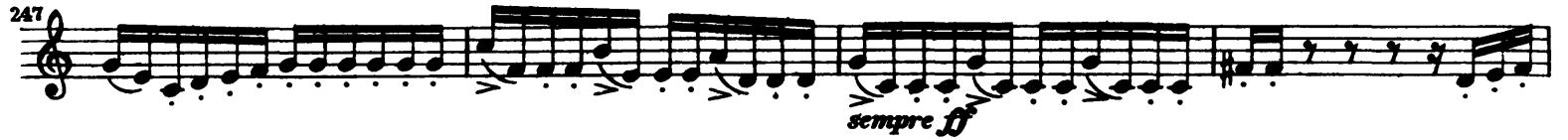
p *cresc.*

più f *mf*

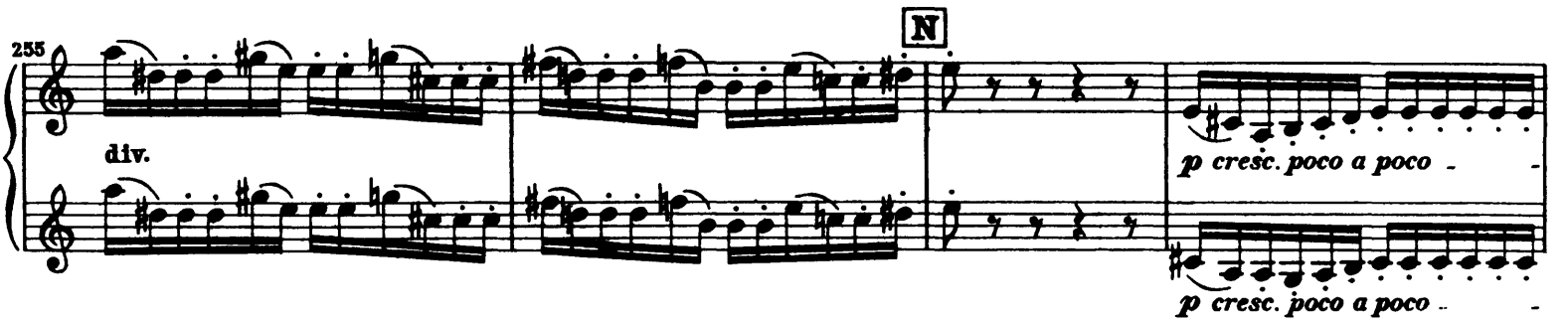
cresc. *f*

Detailed description: This page of a musical score for Violino I contains measures 190 through 239. The music is written on a single staff in treble clef. It features a variety of rhythmic patterns, including eighth and sixteenth notes, often with slurs and accents. Dynamic markings such as *f*, *ff*, *pp*, *poco cresc.*, *p*, *cresc.*, *più f*, *mf*, *cresc.*, and *f* are used throughout. There are five boxed letters: **I** at measure 190, **K** at measure 207, **L** at measure 223, **M** at measure 239, and another **I** at the end of measure 190. The score is printed in black ink on a white background.

243  *ff*

247  *sempre ff*

251 

255  **N**
div. *p cresc. poco a poco*

259 

263 *unis.*  *ff*

267  *ff*

271 

Andante non troppo (tempo del comincio)

275  *ff* *sempre marcatisissimo* *ff sf sf* *ff*

284  *ff* *ff*

Violino I

II. Walzer

Moderato. Tempo di Valse
dolce e molto grazioso

p *cresc.*

11 *rit.* *f*

20 **A** *a tempo* *ff* *stringendo* *rit.*

31 *p*

41 *f* *p* *più f cresc.* *mf*

51 *f* **B**

57 *f*

64

71 *rit.* *a tempo* **C** *mf* *mf cresc.*

78 *mf cresc.* *f*

86 *dim.* *mf* *mf cresc.*

94 *cresc.*

101 *f* *dim.*

108 *p* **D**

117 *cresc.* *mf* *cresc.*

127 *f* *rit.* **E** *a tempo* *ff*

136 *stringendo* *rit.* *p*

147 *f* *p*

157 *più f cresc.* *mf*

166 *f*

172

181

188 **F** *f* *marcato* *dim.*

201 *pp* *pp* *ppp* Viol. II

215 *ppp* *pizz.*

Detailed description: This page of a musical score for Violino I in Tchaikovsky's Serenade in C for Strings, Op. 48, contains measures 101 through 215. The music is written in treble clef with a key signature of one sharp (F#). The score features a variety of dynamics, including fortissimo (f), piano (p), mezzo-forte (mf), fortissimo (ff), pianissimo (pp), and pianissimo (ppp). Performance instructions such as 'dim.', 'cresc.', 'stringendo', 'rit.', 'a tempo', 'marcato', and 'pizz.' are used throughout. There are three key signature changes indicated by boxed letters: D (measure 108), E (measure 127), and F (measure 188). The score includes several complex passages, notably a rapid sixteenth-note run in measure 166 and another in measure 172, both marked with a '5' for five fingers. The piece concludes in measure 215 with a pizzicato instruction.

Violino I

III. Élégie

Larghetto elegiaco

pp mp mp pp

pp mf pp pp

mf ff mf *Poco più animato* *molto cantabile*
Viola pizz. p

dim. p espr.

cresc. f *trm* *trm*

mf p *espr.* *cresc. poco a poco*

f p *cresc. poco a poco*

sempre cresc. ff *poco dim.*

mf mf f

mf p *espr.* *più f* f

p *cresc.* f *cresc.* ff

mf *mettete i sord. Vello.* 1

Più mosso

93 *con sord.* *mf* *stringendo* *cresc.* *ff*

102 *rit. molto* *p* *pp* *ppp*

109 **Tempo I** *pp* *mp* *pp* *mf* *pp*

117 *pp* *mf* *sf cresc.* *sf* *mf*

125 *dim.* *p* *mf-f* *sf ff* *f*

133 *p* *pp* *mf* *cresc.*

142 *f dim.* *sf* *sf* *sf* *p < sf* *p < sf* *p > pp*

152 *sempre pp* *dim.* *p* *pp* *ppp* *pppp*

IV. Finale

(Tema Russo)

Andante
con sord.

p

12 *ten.* *ten.* *ten.* *p* *p*

22 *pp*

34 *rit.* *alzate sord.*

Violino I

Allegro con spirito

41 *senza sord.* *p*

54 *un poco marc.* *p* *mf* *f* **A**

64 *ff* *pizz. 1* *2*

74 3 4 5 6 7 8 9 10 11 12 *f* *mf*

84 **B** *mf* *più f*

94 *arco* *mf* *f* 1

105 *mf* *f* *f con anima*

117 **C** *f cresc.*

129 *ff*

139 **D** *ff*

149 *ff*

157

165 **E** *Vcllo.*

175 *pp*

187 *poco a poco cresc.*

200 **F** *mf sempre cresc.*

213 *f* *cresc.*

224 *ff* **G** Viol. II

235 *ff* *sempre ff*

246

256 **H** *sempre ff* *ff marcato*

265

272 **I** *ff* *pizz. 1* *2*

286 *f* *mf*

296 **K** *mf* *piu f*

306 *arco* *mf* *f* **1**

Detailed description: This page contains the musical score for the first violin part of Tchaikovsky's Serenade in C for Strings, Op. 48. The score is written in treble clef with a key signature of one flat (B-flat major or D minor). It consists of ten staves of music, numbered 175 to 306. The music features a variety of dynamics, including *pp*, *poco a poco cresc.*, *mf sempre cresc.*, *f*, *cresc.*, *ff*, *sempre ff*, *ff marcato*, *mf*, and *piu f*. There are several performance markings, including *arco* and *pizz.* (pizzicato). The score includes several boxed letters (F, G, H, I, K) and numbers (1, 2, 3, 4, 5, 6, 7, 8, 9, 10, 11) indicating specific measures or techniques. The music is characterized by flowing lines, some with slurs, and a dynamic range from very soft to very loud.

Violino I

377 *mf* *f con anima*

329 *f cresc.* **L**

341 *ff* *ff*

351 *ff* **M**

361 *ff* **N**

369

377

386 **Molto meno mosso** *fff*

400 *ff* *marcatissimo* *string. al*

411 **Tempo I**

420 **Più mosso** *sempre fff*

429

440

Detailed description: This page of a musical score for Violino I contains measures 377 through 440. The score is written on ten staves. It begins with a dynamic marking of *mf* and a performance instruction of *f con anima*. The music features various dynamics including *f cresc.*, *ff*, and *fff*. There are several fermatas and slurs. Performance markings include **L**, **M**, and **N** in boxes. A section starting at measure 386 is marked **Molto meno mosso**. A section starting at measure 400 is marked *marcatissimo* and includes the instruction *string. al*. A section starting at measure 411 is marked **Tempo I**. A section starting at measure 420 is marked **Più mosso** and *sempre fff*. The score concludes with a final cadence at measure 440.

Peter Ilyich Tchaikovsky
Serenade for Strings, Op. 48

Violine II

I. Pezzo in forma di Sonata

Andante non troppo

f *sempre marcatissimo*

9 *ff* *ff*

19 *f*

28 *mf* *p dim.* *pp*

37 **A** **Allegro moderato** *f* *cresc.*

46 *ff* **B** *div. p* *p*

55 *cresc. al.* *ff* *p*

63 *cresc. al.* *ff* *ff* *unis.*

71 *div.* **C** *unis.* *f*

79 *ff* *f* *ff*

84 *ff*

89 **D** *pizz.* *p* *2* *(pizz) Viol. I* *3* *p*

Viol. I

Violine II

99 *arco*
pp *pp*

104 **E** *p* *più f*

110 *p* *cresc.* *più f*

116 *mf* *cresc.* *f*

121 **F** *ff*

126 *ff* *ff*

131 *sempre ff*

137 **G** *pizz.* *div.* *p* *unis. arco*
pizz. *p cresc. poco a poco*

144 *fff*

150

156 **H** *f* *cresc.*

165 *div.* *p*

174 *cresc. al.* *ff* *p*

182 *cresc. al.* *ff* *ff* *unis.*

190 *div.* **I** *unis.*

197 *f* *ff*

203 *ff*

208 **K** *p*

214 *pp*

219

224 **L** *poco cresc.* *p*

231 *cresc.* *più f* *mf* *cresc.*

237 *f* *ff* **M**

242 *ff*

247 *sempre ff*

254 **N** *pizz.* *div.* *p* *pizz.* *p cresc.* **1**

Detailed description: This page of a musical score for Violine II in Tchaikovsky's Serenade in C for Strings, Op. 48, contains measures 182 through 254. The score is written on a single staff in treble clef with a key signature of one sharp (F#). It features a variety of rhythmic patterns, including eighth and sixteenth notes, and rests. Dynamic markings range from *pp* (pianissimo) to *ff* (fortissimo), with some passages marked *sempre ff*. Performance instructions include *cresc.* (crescendo), *al.* (allargando), *div.* (divisi), *pizz.* (pizzicato), and *unis.* (unison). Rehearsal marks are indicated by boxed letters: **I** at measure 190, **K** at measure 208, **L** at measure 224, and **M** at measure 237. A first ending bracket labeled **1** is shown at the end of measure 254.

Violine II

262 *unia. arco*

268 *ff*

275 *ff* *sempre marcatissimo*

283 *fff*

Andante non troppo (tempo del comincio)

II. Walzer

Moderato. Tempo di Valse

Viol. I *pp* *poco cresc.*

11 *rit.* **A** *a tempo* *mf* *ff*

22 *stringendo* *rit.*

33

43 *più f cresc.* *mf* *ff* **B**

55

66 *rit.* *a tempo* **C** *mf*

78 *mf* *cresc.* *dim.*

88 *mf* *cresc.*

100 *ff* *dim.*

109 *p* *p* **D**

118 *cresc.* *mf* *cresc.*

128 *f* *ff* *rit.* **E** *a tempo*

138 *stringendo* *rit.* *p*

149 *f* *p*

159 *piu f cresc.* *mf* *ff*

171

181 **F**

192 *f* *p* Viola

203 *pp* *pp*

213 *pizz.* *ppp* *div.* *ppp* *unis.*

Violine II

III. Élégie

Larghetto elegiaco

pp *mp* *mp* *pp*

8 *pp* *mf* *pp* *pp*

16 *mf* *ff* *mf* *p* *sempre p ma sensibile*

Poco più animato
pizz.

24 *più f* *p*

31 *sempre pizz.* *p* *cresc.*

35 *f*

39

43 **arco** *p* *cresc. poco a poco*

47 *f*

51 *p* *cresc. poco a poco*

55 *sempre cresc.*

59 *ff* *poco dim.*

63 *mf* *f* *f*

69 [B] *mf* 1 *p* *più f*

75 1 *p* *cresc.* *f* *cresc.*

83 *ff*

90 [C] *stringendo* *f* *p* *più f* *mf*

101 *Più mosso* 3 *rit. molto* *Viol. I* *Tempo I* *con sord.* *f* *mettete i sord.* *pp* *mp*

113 *pp* *mf* *pp* *pp* *mf*

120 *sf* *cresc.* *sf* *mf* *dim.* *p*

128 *mf* *f* *ff* *f* *p*

135 [D] *pp* *p* *mf*

142 *f* *dim.* *sf*

146 *sf* *sf* *p* *sf* *p* *sf* *p* *pp*

153 *sempre pp* *dim.* *p* *pp* *ppp* *pppp*

Violine II

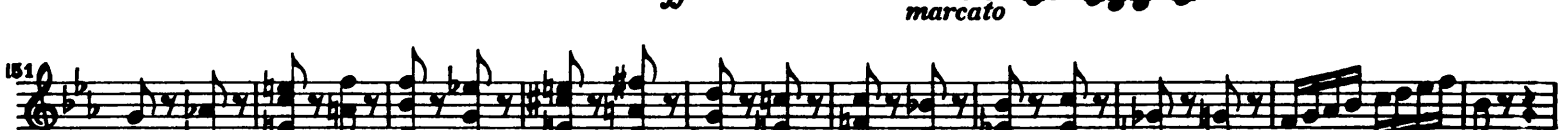
IV. Finale

(Tema Russo)

Andante
con sord.



Allegro con spirito



161 Vello. *f*

172 *f* *pp*

189 *pp* *poco a poco cresc.* *mf sempre cresc.*

207 *f* *cresc.*

223 *ff*

236 *sempre ff*

246

256 *sempre ff*

268 *ff*

275 *ff* pizz. 1 2 3

287 *f* *mf* *mf*

298 *più f*

309 *f*

320 arco *f con anima*

336 *f* *cresc.*

The musical score for Violine II consists of 14 staves of music. The notation includes various dynamics such as *f*, *pp*, *mf*, *ff*, and *con anima*. Performance instructions include *Vello.*, *pp*, *poco a poco cresc.*, *mf sempre cresc.*, *cresc.*, *sempre ff*, *ff*, *più f*, *f*, *con anima*, and *f cresc.*. There are also performance markings for *arco* and *pizz.* with fingerings 1, 2, and 3. The score is marked with letters E, F, G, H, I, K, and L in boxes. Measure numbers 161, 172, 189, 207, 223, 236, 246, 256, 268, 275, 287, 298, 309, 320, and 336 are indicated at the beginning of their respective staves.

Violine II

350

356 **M**

364 **N**

371

377

384 **Molto meno mosso**

397

406 *stringendo al* - - - **Tempo I**

416

424 **Più mosso**

432

441