

Robert Schumann
Symphony No. 2 in C Major, Op. 61

Violine I

Sostenuto assai $\text{♩} = 76$

Cor *pp*

6 *fp*

12 Ob. *p* Clar. *p*
Basso

19 *poco cresc.* *dim.* Basso

25 **Un poco più vivace**
Ob I *f* Fl *f* Ob. *f* Cl. *f*
p cresc. *f* *p cresc.*

29 *p cresc.* *f* *p cresc.* *p cresc.*

32 *p cresc.* *al*

35 *f* *f* *f* *p*

39 *f* *p* *f* *p* *f*

45 *più e più string.*
fp *fp* *dim.*

VIOLINO I

Allegro ma non troppo $\text{♩} = 144$

50 *p cresc.* *sempre cresc.*

58

64 **B** Ob. *sf* *f*

69 *sf* *sf* *sf*

76 *sf* *sf*

81 *sf* *sf* *dim. p* *sf*

86 *sf* *cresc.* *sf*

91 *sf* *sf p cresc.* *sf*

100 *f* *sf* *sf* *p cresc.*

104 *sf* *sfp*

111 *cresc.*

116 *f* *sf* *sf*

VIOLINO I

122 Musical staff 122: Treble clef, C major key signature. Starts with a dynamic marking of *sf*. A **D** sharp sign is placed above the staff. The staff ends with a dynamic marking of *p*.

129 Musical staff 129: Treble clef, C major key signature. Starts with a dynamic marking of *fp*. The staff ends with a dynamic marking of *fp espress.*

139 Musical staff 139: Treble clef, C major key signature. Starts with a dynamic marking of *fp*. The staff ends with a dynamic marking of *sf*.

146 Musical staff 146: Treble clef, C major key signature. Starts with a dynamic marking of *sf*. The staff ends with a dynamic marking of *p*.

152 Musical staff 152: Treble clef, C major key signature. Starts with a dynamic marking of *fp*. The staff ends with a dynamic marking of *fp espress.*

162 Musical staff 162: Treble clef, C major key signature. Starts with a dynamic marking of *fp*. The staff ends with a dynamic marking of *sf*. A *cresc.* marking is present above the staff.

171 Musical staff 171: Treble clef, C major key signature. Starts with a dynamic marking of *sf*. The staff ends with a dynamic marking of *f*.

177 Musical staff 177: Treble clef, C major key signature. Starts with a dynamic marking of *f*. The staff ends with a dynamic marking of *f*.

181 Musical staff 181: Treble clef, C major key signature. Starts with a dynamic marking of *f*. The staff ends with a dynamic marking of *f*.

189 Musical staff 189: Treble clef, C major key signature. Starts with a dynamic marking of *f*. The staff ends with a dynamic marking of *sempre f*.

194 Musical staff 194: Treble clef, C major key signature. Starts with a dynamic marking of *f*. The staff ends with a dynamic marking of *f*.

198

203

sf p cresc.

208

215

sf p cresc.

224

cresc.

234

f p cresc. ff sf

246

250

255

sf f

262

sf

267

sf

VIOLINO I

272 *sf* *sf*

278 *sf* *sf* *sf*

283 *sf* *sf*

287 *dim. p* *sf* *sf* *cresc.* *sf*

294 *sf* *sfp* *cresc.* *sf*

300 *f*

305 *H* *sf* *sfp* *sf* *sf*

313 *con fuoco* *sf* *f* *sf* *sf* *sf* *sf* *cresc.*

322 *sf* *f*

328 *sf* *sf*

332 *sf* *sf* *sf* *sf*

Detailed description: This page of a musical score for Violino I contains ten staves of music, numbered 272 to 332. The notation is in treble clef with a key signature of one flat (B-flat). The music features a variety of rhythmic patterns, including eighth and sixteenth notes, and rests. Dynamic markings such as *sf* (sforzando), *f* (forte), *dim. p* (diminuendo piano), *cresc.* (crescendo), and *con fuoco* (with fire) are used throughout. A hairpin symbol is present above measure 287. A rehearsal mark 'H' is placed above measure 305. The score concludes with a final measure at 332.

Ob. Fl. Ob.

339

345

349

353 *p*

357 *f*

361 *f* *f* *f* *f sempre*

365 *sf*

369 *sf* *sf*

373 *sf* *sf*

377 *sf* *ff sf* *sf*

383

Detailed description: This page of a musical score for Violino I in Schumann's Symphony No. 2 in C Major, measures 339-383. The score is written on ten staves. The key signature is C major. The first staff (339) features woodwind entries for Oboe (Ob.) and Flute (Fl.) with dynamic markings of *sf*. The second staff (345) continues with a dense texture of sixteenth notes. The third staff (349) shows a similar texture. The fourth staff (353) begins with a *p* dynamic and includes a first ending bracket labeled 'I'. The fifth staff (357) features a *f* dynamic with a crescendo hairpin. The sixth staff (361) continues with *f* dynamics and includes the instruction *f sempre*. The seventh staff (365) features a *sf* dynamic. The eighth staff (369) features *sf* dynamics. The ninth staff (373) features *sf* dynamics. The tenth staff (377) features *sf*, *ff sf*, and *sf* dynamics. The final staff (383) concludes the passage with a *sf* dynamic.

VIOLINO I

SCHERZO

Allegro vivace ♩ = 144

mf

cresc.

f *mf* *p*

Fl.

poco rit. *a tempo*
Viol. II

cresc. *f* *p* *cresc.*

f

p

Fl.

poco rit. *a tempo*
Viol. II

VIOLINO I

56 *cresc.* *f*

62 *p* *cresc.*

67 *f* *sf*

72 *p* Viol II

77 *sf* Viol II *cresc.*
Vcello Vcello

82 *f*

87 *ff*

92 *p* *sfz*

98 **Trio I** *p* *p*

106 *sf* *p*

(117) *ritard.* *a tempo* *p*

Detailed description: This page of a musical score for Violino I in C major, measures 56-117. The score is written on a single staff in treble clef. It begins with measure 56, marked with an accent and a crescendo leading to a forte (f) dynamic. The music consists of eighth and sixteenth notes. Measure 62 starts with a piano (p) dynamic and a crescendo. Measure 67 features a forte (f) dynamic and a sforzando (sf) dynamic. Measure 72 is marked piano (p) and includes a 'Viol II' entry. Measure 77 has a sforzando (sf) dynamic and a crescendo, with 'Viol II' and 'Vcello' entries. Measure 82 is marked forte (f). Measure 87 is marked fortissimo (ff). Measure 92 is marked piano (p) and sforzando (sfz). Measure 98 begins the 'Trio I' section with a piano (p) dynamic. Measure 106 is marked sforzando (sf) and piano (p). Measure 117 is marked piano (p) and includes a first and second ending bracket, a ritardando (ritard.) marking, and a return to 'a tempo'.

VIOLINO I

125 *poco rit.* *a tempo* *fp* 1

134 *p* 1 3 3

142 *f* *p*

152 *ritard.* *a tempo* 3 3

158 *cresc.* *f* L

163

168

172 *p* ^{Fl.}

177 ^{Fl} *poco rit.* *a tempo* Viol. II

182 *cresc.*

188 *f* *p* *cresc.*

Detailed description: This page contains the musical score for the first violin part of the first movement of Schumann's Symphony No. 2 in C Major. The score is written on ten staves of music, with measure numbers 125, 134, 142, 152, 158, 163, 168, 172, 177, 182, and 188 marked at the beginning of each line. The music is in 4/4 time and C major. It features various dynamics including piano (p), fortissimo (fp), and crescendo (cresc.), as well as performance instructions such as 'poco rit.', 'a tempo', and 'ritard.'. The score includes triplets, slurs, and accents. A first flute (Fl.) part is indicated above the staff at measure 172. The key signature changes to C minor at measure 158, marked with a 'L' (Larghetto). The score concludes at measure 188.

193 *f*

198 *f*

203 *p* Viol. II *f* Viol. II *f*
Vcello Vcello

208 *cresc.* *f*

213

218

224 **Trio II** *p*

235 *mf* Ob. I

248 Viol. II *p*

262 *cresc.* **M** *mf*

275 Ob. I *p* Fl. I *p*

Detailed description: This page of a musical score for Violino I in Schumann's Symphony No. 2 in C Major, measures 193-275. The score is written on ten staves. Measures 193-202 feature a rhythmic pattern of eighth notes with a dynamic of *f*. Measure 203 introduces a new texture with *p* dynamics for Violino II and Violoncello. Measure 208 shows a *cresc.* leading to *f*. Measure 224 marks the beginning of 'Trio II' with a *p* dynamic. Measures 235-247 feature a melodic line for Oboe I (*mf*) and Violino II (*p*). Measure 262 includes a *cresc.* and a **M** marking, with dynamics *mf*. Measure 275 features Oboe I (*p*) and Flute I (*p*).

12

VIOLINO I

287 *mf*

295 *cresc.* *mf*

300

304 *cresc.*

308 *f* *p*

312 Fl.

316 Fl. *poco rit.* *a tempo* Viol. II

322 *cresc.* *f* *p*

327 *cresc.*

331 *f*

335 *f*

340 Viol. II Vcello *p* *i*

345 *cresc.* *f*

Detailed description: This page of a musical score for Violino I in Schumann's Symphony No. 2 in C Major, measures 287-345. The score is written on ten staves. It begins with a melodic line in measure 287 marked *mf*. The music features various dynamics including *cresc.*, *mf*, *f*, and *p*. There are several *fl.* (flute) entries and *Viol. II* and *Vcello* (cello) entries. Tempo markings include *poco rit.* and *a tempo*. The key signature changes from one flat to two flats. The score concludes with a *cresc.* and *f* dynamic in measure 345.

350

355

Coda
1

360 *sempre f*
Basso

366

371

376

381

386

391

Adagio espressivo $\text{♩} = 78$

p cantabile *fp* *fp*

8 Ob. I *fp*

13 *cresc.*

18 *dim.* *Cor. p* *Clar. fp* *Cor. fp* *Clar. fp* *Cor.* *Clar. ten.* *p*

VIOLINO I

25 *pp*
p *F1* *3* *3*

32 *sf*

38 *cresc.* *dim.*

44 *N* *3* *3*
poco a poco cresc.

53 *pp* *trm* *trm* *trm* *trm*
dim. *p* *dim.* *Viol II* *sempre pp*

64

69 *cresc.*

74 *Viol II* *fp* *fp*

80 *p* *3* *3*

87 *fp*

93 *cresc.*

98 *dim.* *pp* *3* *3*

Detailed description of the musical score: This page contains ten staves of music for Violino I. The notation includes various dynamics (pp, p, sf, cresc., dim., fp, sempre pp) and articulations (accents, slurs, triplets). Performance markings such as 'F1' and 'N' are present. The music consists of eighth and sixteenth notes, often in rhythmic patterns. The page number 14 is at the top left.

VIOLINO I

104 *poco a poco cresc.* *dim.*

112 *p* *dim.* *fp*

122 *poco a poco ritard* *dim.* **Molto adagio**

Allegro molto vivace $\text{♩} = 170$ *f* *pp* *f* Fl.

9 *f*

18 *f*

26 *Vcello* *Viol.II*

34 *Viol.II*

43 *p dolce*

50

55 *cresc.*

60 *Viol.II* *f* *Viol.II*

Detailed description: This page of a musical score for Violino I in C major, measures 104-150. The score is written on ten staves. It begins with measure 104, marked 'poco a poco cresc.' and 'dim.'. Measure 112 starts with a piano (*p*) dynamic and includes 'dim.' and 'fp' markings. Measure 122 is marked 'poco a poco ritard' and 'dim.', and the tempo changes to 'Molto adagio'. The score then transitions to 'Allegro molto vivace' with a tempo of quarter note = 170. Dynamics range from *f* to *pp*. The score includes various musical notations such as slurs, ties, and accents. Instrument labels 'Vcello', 'Viol.II', and 'Fl.' are present. The page number '15' is in the top right corner.

VIOLINO I

Violino I score, measures 66-161. The score is written on a single staff in treble clef with a key signature of one sharp (F#). The music features various dynamics including *mf*, *f*, *cresc.*, and *marcato*. It includes several slurs and accents. Instrument labels include *Viol. II* and *Viola*. Measure numbers 66, 72, 79, 90, 99, 105, 114, 125, 133, 139, 149, and 161 are indicated at the start of their respective lines.

173 *3* *3*

178 *sempre cresc.*

183

188 *R* *f* *f* *f* *f* *Clar*

195 *f* *f* *f* *f* *Fl.* *Ob.*

207 *cresc.* *sfz* *f*

213 *Fag* *sfz* *f* *f* *f* *Fl.*

225 *fp* *fp* *fp* *fp* *dim.*

236 *Viol. II* *fp* *fp* *fp*

248 *fp* *f* *p*

261 *f* *p*

274 *G. P.* *G. P.* *G. P.* *Ob.* *p* *p* *p*

VIOLINO I

The musical score for Violino I consists of ten staves of music. The first staff (measures 288-301) is marked *p dolce* and *cresc.*, with a Flute (Fl.) part written above it. The second staff (measures 301-315) features *sf* dynamics. The third staff (measures 315-328) is marked *p*. The fourth staff (measures 328-341) continues the *p* dynamic. The fifth staff (measures 341-355) is marked *cresc.*. The sixth staff (measures 355-365) is marked *Viola* and *sf*. The seventh staff (measures 365-375) is marked *sf cresc.*. The eighth staff (measures 375-389) is marked *sf cresc.* with dynamic markings *sf* and *sf* repeated, and a Tenor (T) part above it. The ninth staff (measures 389-399) is marked *sf*, *sf*, *sf*, *ff*, and *p*. The tenth staff (measures 399-410) is marked *sp* and *Viol. II*. The eleventh staff (measures 410-423) is marked *Clar.*, *cresc.*, and *poco a poco*. The twelfth staff (measures 423-438) is marked *sempre cresc.*.

VIOLINO I

È istesso tempo

451 *sempre cresc.*

461 Fl. Ob.

470 *f*

482 *con fuoco*

496 *ff*

510 Fl. *p cresc.*

526 *cresc. - al ff*

539

554

563

569

575

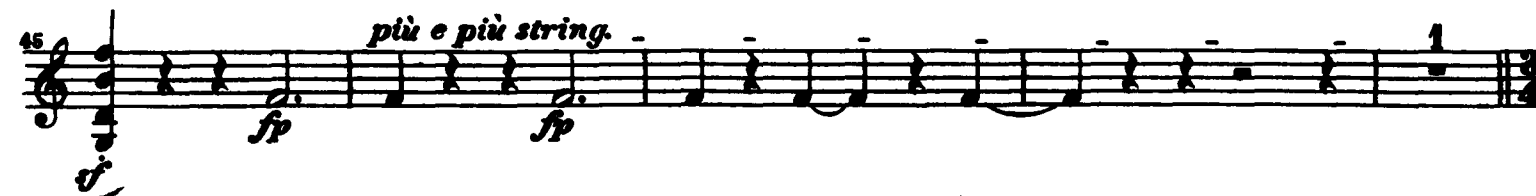
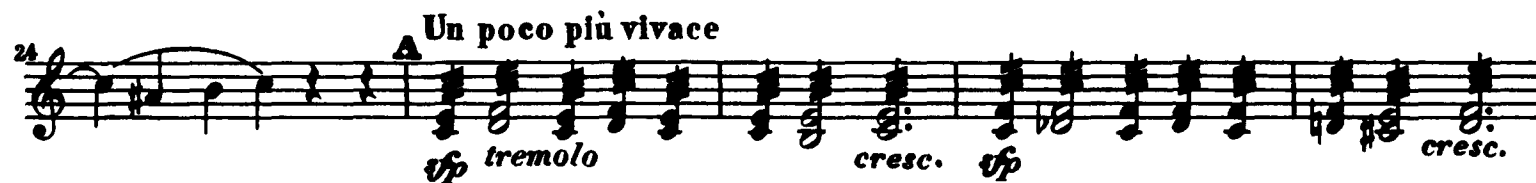
581 *sfz*

Detailed description: This page contains the musical score for the first violin part of the first movement of Schumann's Symphony No. 2 in C Major. The score is written in treble clef with a 2/4 time signature. It begins at measure 451 with the tempo marking 'È istesso tempo'. The music features a variety of dynamics, including *sempre cresc.*, *f*, *con fuoco*, *ff*, *p*, *cresc.*, *cresc. - al ff*, and *sfz*. There are also performance instructions such as 'Fl. Ob.' and 'Fl.'. The score includes several slurs, accents, and dynamic hairpins. The page ends at measure 581 with a double bar line.

Robert Schumann
Symphony No. 2 in C Major, Op. 61

Sostenuto assai (♩ = 76)

Violine II



VIOLINO II

Allegro ma non troppo (♩ = 144)

50 *p cresc.* *sempre cresc.*

58

65 *f* *f* **B**

70 *f* *f*

77 *f* *f*

82 *f* *dim.* *p* *sf* **C₄**

86 *f* *cresc.* *f*

91 *f* *fp* *cresc.*

96 *f* *f* **1.**

(104) **2.**

110 *cresc.*

115 *f* *f*

121 *f* *ff* *f* *ff* *f* **D** **1.**

VIOLINO II

128 *p* *fp espress*

138 *fp* *f*

146 *f* *p* 2

154 *fp espress* *fp*

163 *cresc.*

170

176 *f* *f*

183

188 *sempre forte*

192

196

201 *fp* *p* *cresc.*

210 1

Detailed description: This page contains the musical score for the second violin part of Schumann's Symphony No. 2 in C Major, measures 128 to 210. The score is written on ten staves. It begins with a piano (*p*) dynamic and a *fp espress* marking. The music features a variety of rhythmic patterns, including eighth and sixteenth notes, and rests. Dynamics fluctuate between piano and fortissimo, with a *cresc.* marking indicating a gradual increase in volume. A *sempre forte* instruction is present in measure 188. The score concludes with a first ending bracket in measure 210.

VIOLINO II

217 *p* *cresc.* *cresc.*

227

236 *f* *p* *cresc.* *ff* *sf* *sf* *sf*

248 *sf* *sf* *sf*

257 *sf* *sf* *sf*

263 *sf*

269 *sf* *sf* *sf*

276 *sf* *sf* *sf* *sf* *sf*

284 *sf* *dim.* *p* *sf*

290 *sf* *cresc.* *sf* *sf* *sf* *sf* *cresc.*

297 *sf* *f*

306 *sf* *sf* *sf* *sf*

317 *con fuoco* *f* *sf* *sf* *sf* *sf* *sf* *cresc.*

VIOLINO II

322 *f* *f*

329 *f* *f* *f* *f* *f* *sf*

338 *f*

343 *f*

348

353 *p* *f*

358 *f* *f* *f*

362 *f* *f* *f sempre*

366 *sf* *sf*

370 *sf* *sf*

375

379

384

VIOLINO II

SCHERZO

Allegro vivace (♩ = 144)

Viol. I

Viol. I

cresc.

1. 2.

f *p*

Viol. I *poco rit. a tempo*

1 3

f *p* *cresc.* *f*

p cresc. *f*

Viol. I *poco rit. a tempo*

1 3

f *p* *cresc.* *f* *p cresc.*

f

f *cresc.* *f*

VIOLINO II

87

94 *ff* *f* *p* **Trio I** 1 3 *p*

101 1 *p* 3

109 1. *f* *p*

117 2. 3 3 3 3 *ritard.* *a tempo* 2 *p*

125 3 *poco ritard.* *a tempo* 1 3 *f* *p*

135 1 *p*

142 *f* *p*

151 3 *ritard.* *a tempo* 3 *cresc.*

160 *f*

167 *p*

177 *Viol. I poco rit.* *a tempo* *f*

183 1 3 *cresc.* *f*

VIOLINO II

183 *cresc.* *f*

199 *p* *f*

205 *cresc.* *f*

213 *f*

221 **Trio II** *p*

229 15

265 *p*

265 *cresc.* *mf* **M**

273 17 *mf*

301 *cresc.* *f*

311 *p* Viol. I

318 *poco rit.* *a tempo* *f* 1 *p* *cresc.*

324 3 *f* *cresc.*

VIOLINO II

333 *f*

340 *p* *f* *cresc.*

346 *f*

355 *f*

Coda
360 *sempre f*

365

369

373

377

381

385

389

393

Detailed description: This page contains the musical score for the Violino II part of the second movement of Schumann's Symphony No. 2 in C Major. The score is written on a single staff in treble clef with a key signature of one flat (B-flat). It begins at measure 333 with a forte (*f*) dynamic. The music features a variety of rhythmic patterns, including eighth and sixteenth notes, and rests. Dynamic markings include piano (*p*), forte (*f*), and crescendo (*cresc.*). A section labeled 'Coda' begins at measure 360 with a '1' above the staff and a *sempre f* marking. The score concludes at measure 393.

VIOLINO II

Adagio espressivo (♩ = 76)

p cantabile *fp* *fp*

cresc.

divisi *dim.* *p*

3 *2* *3*

28 *3* *1* *fp*

38 *cresc.* *dim.* *N* *pp*

45 *poco a poco cresc.* *dim.*

56 *p* *dim.* *sempre pp*

66

71 *cresc.*

77 *p*

84 *fp*

93 *cresc.* *dim.*

100 *pp* *poco a poco cresc.*

VIOLINO II

110 *trm trm trm trm*
dim. p *dim.* *fp*

121 *dim.* *Molto adagio*
poco a poco ritard. *pp*

Allegro molto vivace (♩ = 170)

122 *f* *3*

126

22 *>*

31

40 *P* *1* *p* *2* *2*

50 *3*

58 *cresc.*

65 *f* *1*

71

78 *cresc.*

89 *1* *2* *1*

VIOLINO II

99

106

114

122

130

138

141 *marcato*

152

164

174 *sempre cresc.*

180

188 *f* *f* *f* *f sempre con*

182 *energia*

Detailed description: This page contains the musical score for the second violin part of Schumann's Symphony No. 2 in C Major, measures 99 through 182. The score is written on ten staves. It begins with a treble clef and a common time signature. The music features a variety of rhythmic patterns, including eighth and sixteenth notes, and rests. There are several dynamic markings, including *marcato* at measure 141, and a series of *f* (forte) markings starting at measure 188. Performance instructions include *sempre cresc.* (always crescendo) and *f sempre con energia* (forte always with energy). The score includes various musical notations such as slurs, accents, and fingering numbers (e.g., '1' above measure 138).

198

204 *cresc.*

210

216

222

228 *dim.*

234 *p*

240

246

252 *f* *p*

258

264 *f* *p*

270 *pp* *p* *G.P.* *p* *G.P.* *p* *G.P.* *8*

Detailed description: This page contains the musical score for the Violino II part of Schumann's Symphony No. 2 in C Major, measures 198 through 270. The score is written in treble clef with a key signature of one flat (B-flat). It features a variety of rhythmic patterns, including eighth and sixteenth notes, and rests. Dynamic markings such as *cresc.*, *dim.*, *p*, *f*, and *pp* are used throughout. Performance instructions include accents (>) and fingerings (1, 8). The final measure (270) includes specific fingering and dynamic markings for the notes: *pp*, *p*, *G.P.*, *p*, *G.P.*, *p*, *G.P.*, and a final measure with a fermata and the number 8.

VIOLINO II

288 *p dolce* *cresc.*

301 *f*

312 *f* *p*

327

343 *sf cresc.*

354

364 *sf cresc.*

373 *f* *f* *cresc.* *f*

379 *f* *f* *f* *f*

385 *f* *f* *f* *f*

391 *f* *ff* *p*

405 *fp*

416 *cresc.*

Detailed description: This page of a musical score for Violino II contains 12 staves of music, numbered 288 to 416. The notation includes various dynamics such as *p dolce*, *f*, *sf cresc.*, *fp*, and *cresc.*. It features a variety of rhythmic patterns, including eighth and sixteenth notes, and rests. There are also performance markings like *T* and *1* above the staff. The key signature is C major, and the time signature is 4/4.

VIOOLINO II

429 *cresc.* 3

445 *sempre cresc.* **Lo stesso tempo** 5 *sempre cresc.*

460 1

468

476 *f* *sf*

490 *con fuoco*

503 *ff* *p* *cresc.* 2 2

520

533 *cresc.* *ff*

547

560

566 3 3 3 3

573

580 1

Detailed description: This page of a musical score for Violino II in C major, measures 429-580. The score is written on a single staff in treble clef. It begins with measure 429, marked with a '3' and a 'cresc.' instruction. Measure 445 is marked 'Lo stesso tempo' and 'sempre cresc.', with a '5' above the staff. Measure 460 has a '1' above the staff. Measure 476 is marked with 'f' and 'sf'. Measure 490 is marked 'con fuoco'. Measure 503 is marked with 'ff', 'p', and 'cresc.', with '2' above the staff. Measures 520-533 are marked with 'cresc.' and 'ff'. Measures 566-573 feature triplets, indicated by '3' above the staff. Measure 580 is marked with a '1'. The score includes various musical notations such as slurs, accents, and dynamic markings.