

Darius Milhaud Second Symphonic Suite, Protée

1^{ers} VIOLONS

I. Ouverture

Modéré

10 1 4 Fl.

1^{ers} Violons

mp

1 2 3 4 5

p

1 2 3 4 5

3 *p*

mf

4 *f*

2 8 *ppp* (tranquille)

5 8

3 6 3 *mp*

1^{ers} VIOLONS

This page of the musical score for the 1st Violins of Milhaud's 2nd Symphonic Suite contains measures 7 through 12. The score is written in treble clef with a key signature of one sharp (F#). It includes various musical notations such as slurs, accents, and dynamic markings. Measure 7 begins with a piano (*p*) dynamic. Measure 8 features a mezzo-forte (*mf*) dynamic. Measure 9 is marked with a forte (*ff*) dynamic. Measure 10 is marked with a mezzo-piano (*mp*) dynamic. Measure 11 includes a tritone symbol (*tr b*). Measure 12 is marked with a piano (*p*) dynamic. The score also includes a piano part with a *DIV.* (divisi) marking in measures 9 and 12. Measure numbers 7, 8, 9, 10, 11, and 12 are enclosed in boxes. Fingerings (1, 2, 3, 4) are indicated for several notes. The page number '2' is located in the top left corner.

1^{ers} VIOLONS

Musical score for 1st Violins, measures 11-15. The score is written in treble clef with a key signature of one sharp (F#). Measure 11 starts with a dynamic of *f*. Measure 12 has a dynamic of *ff*. Measure 13 is marked with a box containing the number 13. Measure 14 is marked with a box containing the number 14. Measure 15 is marked with a box containing the number 15. The score includes various musical notations such as slurs, accents, and dynamic markings. The word "UNIS" is written below measure 11. The word "Cédez" is written above measure 15. The word "Mouvt" is written above measure 15. The dynamic *ppp* is written below measure 15. The number 6 is written below measure 15.

II. Prélude et Fugue

Musical score for 1st Violins, measures 16-17. The score is written in treble clef with a key signature of one sharp (F#). Measure 16 is marked with a box containing the number 16. Measure 17 is marked with a box containing the number 17. The score includes various musical notations such as slurs, accents, and dynamic markings. The tempo marking "Très animé" is written above measure 16. The word "pizz" is written above measure 16. The dynamic *p* is written below measure 16. The dynamic *f* is written below measure 17. The dynamic *mf* is written below measure 17. The word "arco" is written above measure 17. The number 5 is written below measure 17.

1^{ers} VIOLONS

Musical score for 1st Violins, measures 18-30. The score is written on ten staves. Measure numbers are boxed and placed above the notes. Dynamics include *f*, *ff*, *mf*, *mp*, and *ff*. Performance instructions include *Très long* and *Velles C.B.*. A *1^{ere} Tromp.* part is indicated in measure 26. Measure 30 is marked *1^{ers} Viol.* and *ff*.

18 2 *f*

19 *ff*

20 *mf*

21 *f*

22 9 23 10

24 10 25 10 26 1 *1^{ere} Tromp.*

27

28 8 29 4 *Très long Velles C.B.* *ff*

30 *1^{ers} Viol.* *ff*

1^{ers} VIOLONS

Musical staff for the first violin part, measures 29-30. It features a melodic line with triplets and slurs.

Musical staff for the divided second violin part (DIV.), measures 29-30. It shows two staves with various notes and rests.

31

Musical staff for the first violin part, measures 31-32. It includes a measure rest of 8 measures and continues the melodic line.

Musical staff for the divided second violin part (DIV.), measures 31-32. It includes a measure rest of 8 measures and continues the accompaniment.

32

Musical staff for the first violin part, measures 33-34. It includes a measure rest of 8 measures and a pizzicato section.

UNIS

pizz.

Musical staff for the first violin part, measures 35-36. It includes a measure rest of 3 measures, a section for "Animez" with a 3-measure rest, and sections for "Altos" and "2ds Vons".

Animez
3

33

2

Altos

2^{ds} Vons

Musical staff for the divided second violin part (DIV. en 3), measures 35-36. It includes a measure rest of 8 measures and dynamic markings like *f* and *ff*.

DIV. en 3

arco 8

arco

arco

f

ff

1^{ers} VIOLONS

III. Pastorale

Souple et animé 10 34 10 35 5 Cors Htb. Fl.

8 bassa

1^{ers} Violons

pp

p

mf *f* *p*

mp

mf

f

ff

1^{ers} VIOLONS

ppp

42

2 3 1

43

f

3

ff

44

3 pizz f

4 Altos ff

45

Mouvt du début

Cédez

1^{ers} Violons

arco

p

46

DIV

pp

47

1 sur le chevalet mf

2

son ordinaire

f

48

2

Detailed description: This page contains the musical score for the first violins of the 2nd Symphonic Suite by Milhaud. The score is written on ten staves. The first staff begins with a treble clef, a key signature of one sharp (F#), and a dynamic marking of *ppp*. Measures 41-42 feature a complex rhythmic pattern with many beamed notes. Measure 43 includes a first ending bracket with a repeat sign and a fermata, with fingerings 2, 3, and 1 indicated above. Measure 44 starts with a *f* dynamic and includes a *pizz* (pizzicato) instruction. Measure 45 features a *ff* dynamic and a *3* (triple) marking. Measure 46 is marked *pp* and includes a *DIV* (divisi) instruction with a circled *x* above the staff. Measure 47 is marked *mf* and includes the instruction *sur le chevalet* (on the bridge). Measure 48 is marked *f* and includes the instruction *son ordinaire* (normal sound). The score concludes with a second ending bracket in measure 48, marked with a *2*.

1^{ers} VIOLONS

Musical score for 1st Violins, measures 49-53. The score consists of six staves of music. Measure 49 is marked with a box containing the number 49. Measure 50 is marked with a box containing the number 50. Measure 51 is marked with a box containing the number 51. Measure 52 is marked with a box containing the number 52. Measure 53 is marked with a box containing the number 53. The music features various dynamics including *p* and *pp*, and includes a *ppp* marking with a hairpin symbol. The notation includes eighth and sixteenth notes, rests, and slurs.

IV. Nocturne

Musical score for Nocturne, measures 54-56. The score consists of three staves of music. The tempo is marked "Souple et modéré" and the dynamic is "sourd." with a *p* marking. Measure 54 is marked with a box containing the number 54. Measure 55 is marked with a box containing the number 55. Measure 56 is marked with a box containing the number 56. The music features various dynamics including *p* and *pp*, and includes a *ppp* marking with a hairpin symbol. The notation includes eighth and sixteenth notes, rests, and slurs. The score includes markings for "Htb." and "1^{ers} Violons Fl.".

1^{ers} VIOLONS

Musical score for 1st Violins, measures 57-60. The score is written in treble clef with a key signature of one sharp (F#). It features various musical notations including slurs, accents, and dynamic markings.

Measure 57: **57**

Measure 58: **58** *Cédez* *au Mouvt*

Measure 59: **59** *rall.* *au Mouvt* *mp*

Measure 60: **60** *sans ralentir*

The score includes a first ending bracket in measure 58, a second ending bracket in measure 59, and a repeat sign in measure 60. A dashed line with the number 8 indicates a first ending bracket.

1ers VIOLONS

V. Final

Vif
mf

61 1

f

62

mp

63 64 1 *p*

1 2 3 4

5 6 65 7 8 9 10 11 12

1^{ers} VIOLONS

13 14 15 16 17 18 19

20 *f*

21 22 23 24 25 26 27

28 29 30 31 32 33 34 *ff*

35 36 37 38 39 40 41

42 43 44 45 46 47 48

DIV. 1 *p* *pp* 1

49 50 51 52 53 54 55

UNIS 2 pizz Animez *ff*

56 57 58 59 60 61 62 *ff*

63 64 65 66 67 68 69

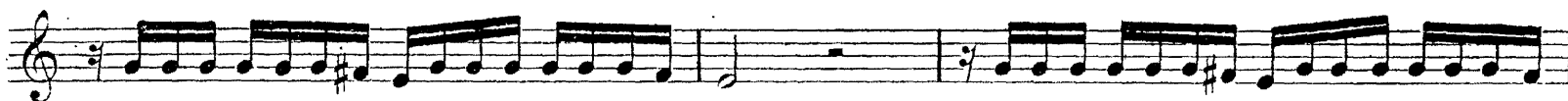
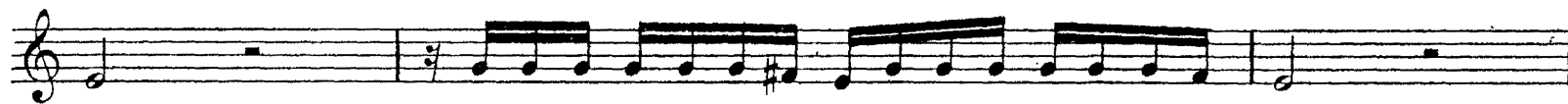
arco *ff* *mp* Tromp (bouchée) Cédez

DIV. en 3

1^{ERS} VIOLONS

au Mouvt
très vif

74



75

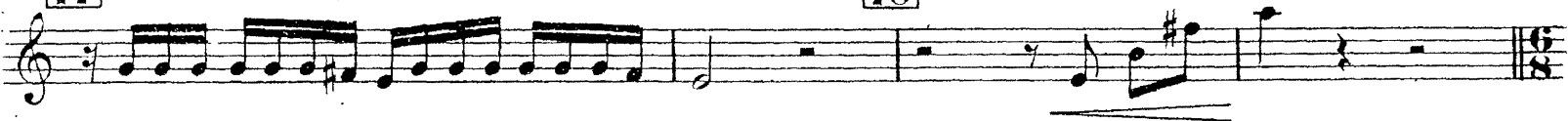


76



77

78



Très vif

ff



Darius Milhaud Second Symphonic Suite, Protée

2^{ds} VIOLONS

I. Ouverture

Modéré

10 **1** 4 Fl.

2^{ds} Violons **2**

mp

p **3** *p* *p* *p*

mf **4** *f*

ff

ppp **5**

3

2ds VIOLONS

6 *mp* *tr*

7 *DIV. pp*

8 *mf*

DIV. en 3 *f*

9 *ff*

10 *UNIS* *ff* *p*

Detailed description of the musical score: The score is for the 2nd Violins part of Milhaud's 2nd Symphonic Suite. It consists of five systems of music. System 1 (Measure 6) is in treble clef, marked *mp*, and features trills (*tr*) over a melodic line. System 2 (Measure 7) is in treble clef, marked *DIV. pp*, and consists of eighth notes in both staves. System 3 (Measure 8) is in treble clef, marked *mf*, and consists of eighth notes in both staves. System 4 (Measure 9) is in treble clef, marked *f*, and is divided into three parts (*DIV. en 3*), with eighth notes in both staves. System 5 (Measure 10) is in treble clef, marked *UNIS* and *ff*, and features a melodic line with first ending markings (1, 2, 3, 4, 5) and a *p* dynamic at the end.

2^{ds} VIOLONS

Musical score for 2nd Violins, measures 11 through 15. The score is written on a single treble clef staff. Measure 11 begins with a dynamic marking of *mf* and a *p* marking. Measure 12 features a *tr* (trill) marking. Measure 13 has a *f* dynamic and a *ff* dynamic. Measure 14 includes a *ff* dynamic and a *ppp* dynamic. Measure 15 is marked with *Cédez* and *Mouvt* (ritardando), with a *pp* dynamic. The score includes various musical notations such as slurs, ties, and triplets.

II. Prélude et Fugue

Musical score for the section "II. Prélude et Fugue", measures 16 through 17. The score is written on a single treble clef staff. Measure 16 is marked *Très animé* and *pizz* (pizzicato), with a *p* dynamic. Measure 17 has a *mf* dynamic. The score includes various musical notations such as slurs, ties, and fingerings.

2^{ds} VIOLONS

18 ² arco *f*

19 *ff*

20 *mf*

21 *f*

22 *mp* pizz 9

23 10 24 10 25 10 26 4 4^{me} Tromp.

27 8

28 10 29 4 *velles C.B.* *très long ff*

30 2^{ds} Violons arco *ff*

Detailed description: This page contains the musical score for the 2nd Violins of Milhaud's 2nd Symphonic Suite, measures 18 through 30. The score is written on ten staves. Measure 18 begins with a dynamic of *f* and the instruction 'arco'. Measure 19 has a dynamic of *ff*. Measure 20 has a dynamic of *mf*. Measure 21 has a dynamic of *f*. Measure 22 has a dynamic of *mp* and includes the instruction 'pizz' and a fermata with the number 9. Measure 23 has a dynamic of 10. Measure 24 has a dynamic of 10. Measure 25 has a dynamic of 10. Measure 26 has a dynamic of 4 and is marked '4^{me} Tromp.'. Measure 27 has a dynamic of 8. Measure 28 has a dynamic of 10. Measure 29 has a dynamic of 4 and includes the instruction 'velles C.B.' and 'très long ff'. Measure 30 has a dynamic of *ff* and includes the instruction '2^{ds} Violons arco'. The score includes various musical notations such as slurs, accents, and dynamic markings.

2^{ds} VIOLONS

31

DIV.

32

UNIS

f

Animez jusqu' à la fin

pizz.

3

3

33

DIV. en 3

arco

f

ff

2^{ds} VIOLONS

III. Pastorale

Souple et animé

10

34

10

35

5

Cors

Musical score for 2nd Violins, III. Pastorale, measures 10-40. The score is written in treble clef with a key signature of one sharp (F#) and a 3/8 time signature. The tempo/mood is "Souple et animé". The score includes dynamic markings such as *pp*, *p*, *mf*, *f*, and *ff*. Measure numbers 34, 35, 36, 37, 38, 39, and 40 are indicated in boxes. The score features various musical notations including slurs, ties, and accents.

2^{ds} VIOLONS

41 *mf* *pp*

42

43 *f* 3

44 *ff* 3 *pizz* *f*

45 Altos Cédez

2^{ds} Violons *Mouvt du début*
avec le bois de l'archet
arco

46 Harm. *pp*

47 1 sur le chevalet *mf*

2 son ordinaire *f*

48 2

Detailed description: This page contains the musical score for the 2nd Violins of Milhaud's 2nd Symphonic Suite, measures 41 through 48. The score is written on a single staff in treble clef. Measure 41 begins with a treble clef, a key signature of one sharp (F#), and a 2/4 time signature. It features a melodic line with eighth and sixteenth notes, marked *mf* and *pp*. Measure 42 continues the melodic line. Measure 43 shows a change in dynamics to *f* and includes a triplet of eighth notes. Measure 44 features a triplet of eighth notes marked *ff*, followed by a pizzicato section marked *pizz* and *f*. Measure 45 includes the instruction 'Altos Cédez' and a triplet of eighth notes. A section starting at measure 46 is marked '2^{ds} Violons Mouvt du début avec le bois de l'archet arco' and *p*. Measure 46 includes the instruction 'Harm.' and a triplet of eighth notes marked *pp*. Measure 47 is marked '1 sur le chevalet' and *mf*. Measure 48 is marked '2 son ordinaire' and *f*. The score concludes with a final measure marked '2'.

2^{ds} VIOLONS

49

p

50

51

52

53

pp

pp

9

IV. Nocturne

Souple et modéré
sourdine 2

54

p

5

Hrb.

1^{ers} V^{ols}

2^{ds} V^{ols}

3

55

3

pizz

(+ +)

2^{ds} VIOLONS

1 **56** 2 arco *p*

tr **57**

tr **Cédez au Mouvt**

58 *mp*

rall

59 *au Mouvt* *mp*

60

sans ralentir

0

Detailed description: This page contains the musical score for the 2nd Violins part, measures 56 through 60. The score is written on a single treble clef staff. Measure 56 begins with a first ending bracket labeled '1' and a second ending bracket labeled '2'. The first ending leads to measure 57, which starts with a trill (tr) and a wavy line. Measure 58 features a series of eighth-note chords, marked with a mezzo-piano (*mp*) dynamic. Measure 59 is marked 'au Mouvt' and 'mp', showing a melodic line with slurs. Measure 60 continues the melodic line, marked 'sans ralentir'. The score concludes with a natural sign (0) above the final note.

2^{ds} VIOLONS

V. Final

Vif
mf

61

62

63

mp

64

p

65

3 4 5 6 7 8

9 10 11 12 13 14 15

16 17 18 19

66

67

2^{ds} VIOLONS

Musical score for 2nd Violins, measures 1-11. The music is in 2/4 time and features a series of eighth-note patterns with slurs and accents. Measure 1 starts with a forte (*f*) dynamic. Measures 2, 4, 6, 8, and 10 contain fingerings 7 and 5. Measure 11 ends with a fortissimo (*ff*) dynamic.

Musical score for 2nd Violins, measures 12-15. The music consists of quarter and eighth notes with slurs.

Musical score for 2nd Violins, measures 16-17. Measure 16 is marked *Un peu moins vif*. Measure 17 includes a slur and a fermata.

Musical score for 2nd Violins, measures 18-20. Measure 18 is marked *mp*. Measure 20 is marked *pp*.

Musical score for 2nd Violins, measures 21-22. Measure 21 is marked *ff*. Measure 22 includes the instruction *Animez pizz*.

Musical score for 2nd Violins, measures 23-24. Measure 23 is marked *ff*. Measure 24 includes a slur and a fermata.

Musical score for 2nd Violins, measures 25-27. Measure 25 is marked *ff*. Measure 26 includes the instruction *arco*. Measure 27 includes a slur and a fermata.

DIV. en 3

2^{ds} VIOLONS

73 UNIS 6 Tromp. *bouché* Cédez *au Mouvt* 2^{ds} Violons
mp *mf*

74

75

76

77

78 *Très vif*
ff