

# Franz Joseph Haydn Symphony No. 104

## Violine I

### Adagio

Musical score for Violin I, Adagio section, measures 1-16. The score is written in treble clef, 3/4 time, and B-flat major. It features a variety of dynamics including *ff*, *fz*, *p*, *f*, and *pp*. The music includes slurs, accents, and a key signature change at the end of measure 16.

### Allegro

Musical score for Violin I, Allegro section, measures 17-50. The score is written in treble clef, 2/4 time, and A major. It features a variety of dynamics including *p* and *f*. The music includes slurs, accents, and a key signature change at the end of measure 50.

# Violine I

56

61

68

75

82

87

93

99

106

113

119

*p*

*f*

*f*

*tr*

*f fz*

*fz*

Detailed description: This page contains the musical score for the first violin part of Haydn's Symphony No. 104, measures 56 through 119. The score is written in treble clef with a key signature of two sharps (D major). It features various musical notations including eighth and sixteenth notes, rests, and dynamic markings such as *p* (piano), *f* (forte), and *fz* (forzando). Performance instructions like *tr* (trill) and *fz* are placed above or below specific notes. The music is divided into ten systems, each starting with a measure number. The final measure (119) ends with a double bar line and repeat dots.

# Violine I

124 *p*

133 *f*

141 *p*

148

154 *f*

159

166

171

177

182

188 *p*

194

201 *f*

Fl.

Detailed description: This page contains the first ten staves of the Violine I part for measures 124 through 201. The music is written in treble clef with a key signature of two sharps (F# and C#). The score includes various dynamics such as *p* (piano), *f* (forte), and *fz* (forzando), as well as articulation marks like accents and slurs. Measure 124 starts with a piano dynamic. Measure 133 features a forte dynamic. Measure 141 returns to piano. Measure 154 has a forte dynamic. Measure 188 is marked piano. Measure 201 is marked forte and includes a 'Fl.' (Flute) entry. The notation consists of eighth and sixteenth notes, often beamed together, with some longer note values and rests.

# Violine I

210

215

221

226

232

239

G.P. G.P.

248

256

262

268

275

281

287

*p*

*f*

*f*

*p*

*f*

*p*

Detailed description: This page of a musical score for Violin I in G major, measures 210-287. The score is written on ten staves. The key signature has one sharp (F#) and the time signature is 3/4. The music features a variety of rhythmic patterns, including eighth and sixteenth notes, often beamed together. Dynamics are indicated by *p* (piano) and *f* (forte). A section of sixteenth-note chords is marked "G.P. G.P." (Grave). The piece concludes with a final chord in measure 287.

# Violine I

Andante

*p* *fz* *p* *fz* *p*

9

15 *fz* *p*

22 *fz* *p* *fz* *p* *fz* *p*

31

38 Fl. *ff*

46 *fz* *fz* *fz*

50

53

56 G.P. *p* *fz* *fz*

64 *fz* *fz* *fz* *fz* *fz*

# Violine I

70 *p*

75 *fz* *p* *fz* *p*

83 *f* *p* *ff*

88 *p*

94

99 *fz* *p*

106 *cresc. - - - - f* *p* Fl.

116 *p* *ff*

123 *fz* *p* *fz*

131 *p* *fz* *fz* *p*

139

145 *pp*

Detailed description: This page contains the musical score for the first violin part of Haydn's Symphony No. 104, measures 70 through 145. The score is written in treble clef with a key signature of one sharp (F#). It features a variety of rhythmic patterns, including eighth and sixteenth notes, and rests. Dynamic markings such as *p* (piano), *fz* (forzando), *f* (forte), *ff* (fortissimo), and *pp* (pianissimo) are used throughout. Performance instructions include *cresc.* (crescendo) and *Fl.* (flageolet). The score includes numerous triplet markings and accents. The page number 7 is located in the top right corner.

# Violine I

## Menuetto Allegro

The musical score for Violin I consists of ten staves of music. The first staff (measures 1-8) begins with a treble clef, a key signature of one sharp (F#), and a 3/4 time signature. The tempo is marked 'Allegro'. The first staff contains notes with dynamic markings *f*, *fz*, *fz*, *fz*, *fz*, and *p*, along with a trill (*tr*) in the eighth measure. The second staff (measures 9-17) continues the melody with *fz* and *f* markings and a trill. The third staff (measures 18-25) features a series of eighth notes with a *p* marking. The fourth staff (measures 26-33) continues with eighth notes and a *p* marking. The fifth staff (measures 34-41) has a *f* marking and a trill. The sixth staff (measures 42-52) includes a trill, a *p* marking, the instruction 'G.P.G.P.' with a trill, and a *fz* marking. The seventh staff (measures 53-59) is the start of the 'Trio' section, marked with a key signature change to two flats (Bb, Eb) and a *p* marking. The eighth staff (measures 60-65) continues the Trio with eighth notes. The ninth staff (measures 66-71) continues with eighth notes. The tenth staff (measures 72-78) continues with eighth notes and a *p* marking. The eleventh staff (measures 79-85) continues with eighth notes and a *p* marking. The twelfth staff (measures 86-94) continues with eighth notes and a *p* marking. The final staff (measures 95) concludes with a half note and a key signature change to one sharp.

*Menuetto da capo*

# Violine I

## Finale Spiritoso

2

*p*

10

18

*f*

24

29

*fz* *fz*

36

43

*fz* *fz* *fz*

50

*fz*

58

*fz* *fz* *p*

66

73

*f*

78



10

# Violine I

84 *p* *fz* *p*

94 *p* *p* *f*

103

108 *fz* *fz* *fz* *fz*

115 *p*

118 *p* *f* Viol. II

125

131 *p* *f*

137

142

147

153 *fz* *fz*

Detailed description: This page contains the musical score for the first violin part of Haydn's Symphony No. 104, measures 84 through 153. The score is written in treble clef with a key signature of two sharps (D major). It features various dynamics including piano (*p*), forte (*f*), and fortissimo (*fz*). The music includes melodic lines with slurs, accents, and dynamic markings, as well as rhythmic patterns and repeat signs with first and second endings. A section for the second violin (Viol. II) begins at measure 118. The page number '10' is in the top left corner.

# Violine I

159 *fz* *fz*

165 G. P. Viol. II *p*

176 1 2 3 4 5 6 *fz*

189 *p* *pp* *p*

199 *f*

206

211

216

121

228 *fz*

235 *fz* *fz*

241

Detailed description: This page contains the musical score for the first violin part of Haydn's Symphony No. 104, measures 159 through 241. The score is written in treble clef with a key signature of two sharps (D major). It features various dynamics including fortissimo (f), fortissimo zingando (fz), piano (p), and pianissimo (pp). There are several slurs and accents throughout. A section starting at measure 165 is marked 'G. P. Viol. II' and includes fingerings 1 through 6. The score concludes with a final measure at 241.

# Violine I

247 Musical notation for measures 247-258. Treble clef, key signature of two sharps (D major). Dynamics: *p*, *fz*, *fz*.

259 Musical notation for measures 259-266. Treble clef, key signature of two sharps (D major). Dynamics: *pp*, *f*.

267 Musical notation for measures 267-275. Treble clef, key signature of two sharps (D major). Dynamics: *fz*, *fz*, *fz*.

276 Musical notation for measures 276-283. Treble clef, key signature of two sharps (D major). Includes woodwind parts: Ob. II, Ob. I, Fl. Dynamics: *fz*, *fz*, *fz*.

284 Musical notation for measures 284-289. Treble clef, key signature of two sharps (D major). Dynamics: *f*.

290 Musical notation for measures 290-295. Treble clef, key signature of two sharps (D major). Dynamics: *fz*, *fz*, *fz*.

296 Musical notation for measures 296-301. Treble clef, key signature of two sharps (D major).

302 Musical notation for measures 302-306. Treble clef, key signature of two sharps (D major).

307 Musical notation for measures 307-316. Treble clef, key signature of two sharps (D major). Dynamics: *fz*.

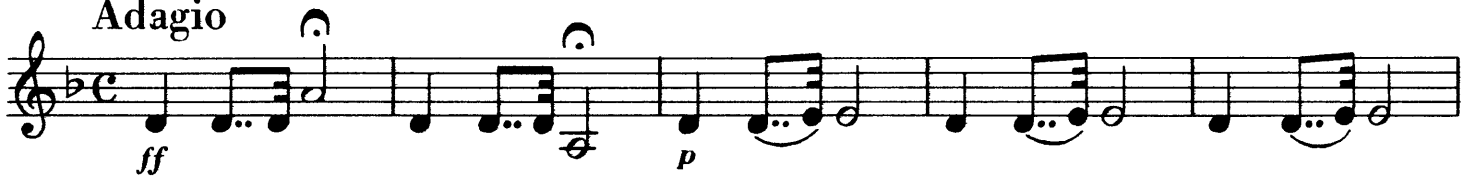
317 Musical notation for measures 317-326. Treble clef, key signature of two sharps (D major). Dynamics: *fz*, *p*, *f*.

327 Musical notation for measures 327-336. Treble clef, key signature of two sharps (D major). Dynamics: *fz*.

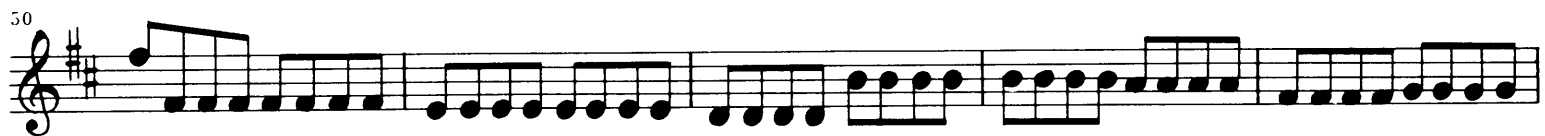
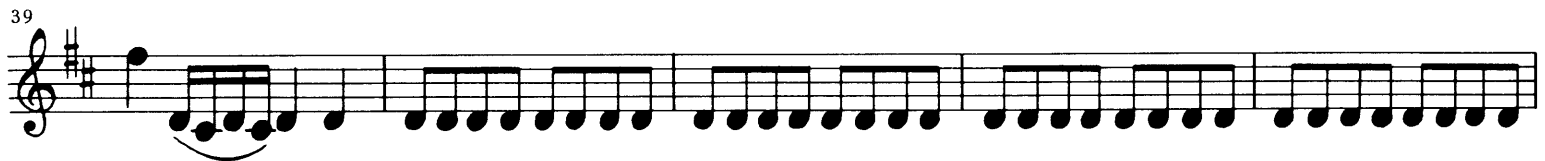
# Franz Joseph Haydn Symphony No. 104

## Violine II

Adagio



Allegro



# Violine II

55

61

67

74

81

86

92

98

104

112

118

*p*

*f*

*fz*

*tr*

*1*

Detailed description: This page contains the musical score for the second violin part of Haydn's Symphony No. 104, measures 55 through 118. The score is written in treble clef with a key signature of two sharps (D major). It features a variety of rhythmic patterns, including eighth-note runs, sixteenth-note passages, and dynamic markings such as *p* (piano), *f* (forte), and *fz* (forzando). Performance instructions include a first ending bracket at measure 67 and a trill (*tr*) at measure 86. The piece concludes with a double bar line at measure 118.

# Violine II

124

135 *p*

141 *f*

146 *p*

151 *f*

156

161

166

172

181

189 *p*

197 Fl.

205 *f*

The image displays a page of musical notation for the Violine II part of Haydn's Symphony No. 104. The score is written in treble clef with a key signature of two sharps (F# and C#). It consists of ten staves of music, each beginning with a measure number. The notation includes various rhythmic values, slurs, and dynamic markings such as *p* (piano) and *f* (forte). A first finger fingering (*1*) is indicated above a note in measure 135. A flute entry (*Fl.*) is marked in measure 197. The page number '4' is located in the top left corner.

# Violine II

211

216

221

228

235 *G.P. G.P.*

244 *p*

251 *f*

258

263 *p*

268

276 *f*

282

287

Detailed description: This page contains the musical score for the second violin part of Haydn's Symphony No. 104, measures 211 through 287. The score is written in treble clef with a key signature of two sharps (D major). It features a variety of rhythmic patterns, including eighth-note runs, sixteenth-note passages, and sustained notes. Dynamic markings include *p* (piano) and *f* (forte). The score includes repeat signs and first/second endings. The notation is clear and professional, typical of a high-quality music library edition.

# Violine II

Andante

9  
18  
28  
38 Fl.  
46  
50  
53  
56 G.P.  
66 Viol. I  
73

*p* *fz* *p*  
*fz* *p* *fz* *p*  
*fz* *p*  
*ff*  
*p* *f* *fz* *fz* *fz* *fz*  
*fz* *fz* *p* *fz* *p*



# Violine II

80

87

93

100

105

108

111

116

125

129

137

142

147

*f* *p*

*ff* *fz*

*p* *fz*

*cresc.* *f* *p* *fz*

*Fl.*

*pp*

Detailed description: This page contains the musical score for the second violin part of Haydn's Symphony No. 104, measures 80 through 147. The score is written in treble clef with a key signature of one sharp (F#). It features a complex rhythmic pattern of eighth and sixteenth notes, often grouped in triplets. Dynamic markings include *f* (forte), *p* (piano), *ff* (fortissimo), *fz* (forzando), *cresc.* (crescendo), and *pp* (pianissimo). A flute part is indicated by 'Fl.' in measure 111. The score concludes with a double bar line at measure 147.

# Violine II

## Menuetto Allegro

Musical score for Violin II, Menuetto Allegro, measures 1-95. The score is written in treble clef with a key signature of one sharp (F#) and a 3/4 time signature. It includes various dynamics such as *f*, *fz*, *p*, and *tr*. The piece is divided into a main section and a Trio section starting at measure 53. The Trio section includes markings for *Viol. I*, *pizz.*, and *coll'arco*. The score concludes with the instruction *Menuetto da capo*.

Menuetto da capo

# Violine II

## Finale Spiritoso

2 4 Viol. I

14

22

27

35

42

48

54

61

67

73

78

12

# Violine II

246

*p* *fz*

256

*fz* *pp* *f*

267

*fz* *fz*

276

*fz* *fz*

283

*f*

289

*fz*

294

*fz* *fz*

300

*fz* *fz*

305

*fz*

312

*fz*

319

*fz* *p* *f*

327

*fz*