

Gioacchino Rossini
L'Italiana in Algeri Overture

TRUMPET I

inDo *Andante*

7 10 6 1 sf sf sf

20 30 2 sf *smorz.*

Allegro
(Fl. Ob. e Cl.) sf sf

B 40 50 **C** 2 f

60

D 70 ff sf

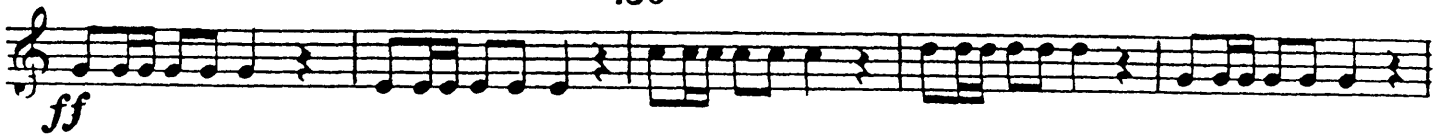
E 80 **F** 90 **G** 100 **H** 110 **I** 120 (Cassa)

p cresc. *mf cresc.* *f cresc.*

TRUMPET I

L

130



M

140

N

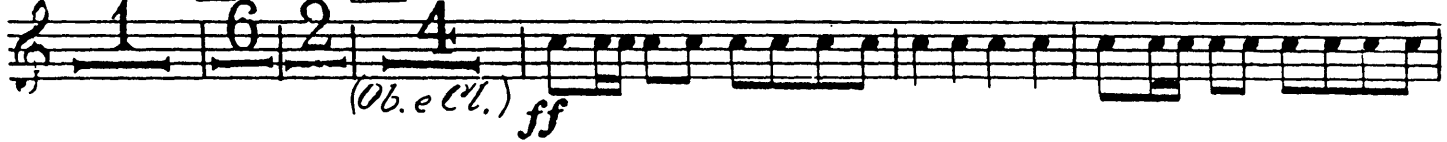
150



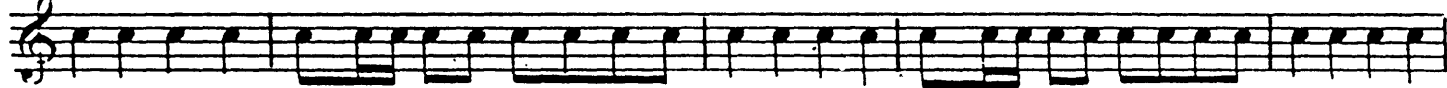
O

160

P



170



Q

180

R

190



S

200

T

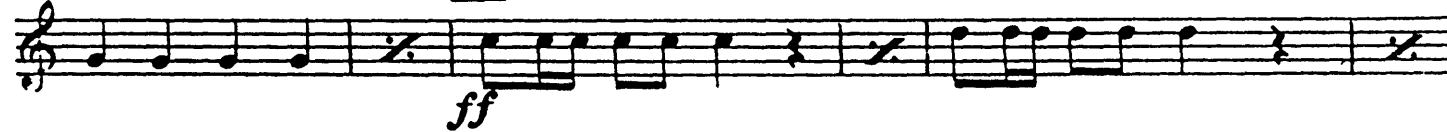
210

U

220



V 230



240



Z



250



stacc.

Gioacchino Rossini
L'Italiana in Algeri Overture

TRUMPET II

inDo *Andante*

7 10

A 20 30 *Allegro*
f *smorz* (Fl. Ob. e Cl.) *sf*

B 40 50 **C**

60

D 70 *ff*

E 80

F 90 **G** 100 **H** 110 **I** 120
mf cresc. *f cresc.* *ff* (Tine e Cassa) *p cresc.*

L

130

TRUMPET II

M

140

