

Ludwig van Beethoven

Leonore Overture No. 2, Op. 72

Trompete I

Adagio

in C 29

ff *p* *ff* *p*

34

Hn. I/II

ff *ff*

40 14 Allegro 24

sempre ff

81

Fl. I/II

p cresc. poco a poco *ff*

90

sf *sf* *sf*

97

ff *ff* *dim.* *p*

104 5

pp *cresc.*

114

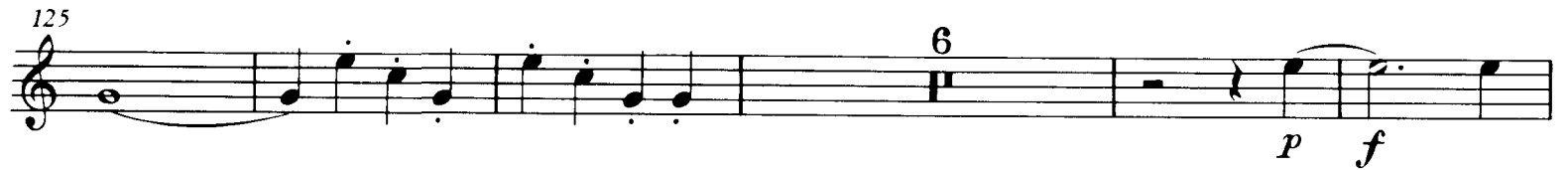
sf *sf* *sf* *sf* *ff*

Trompete I

119



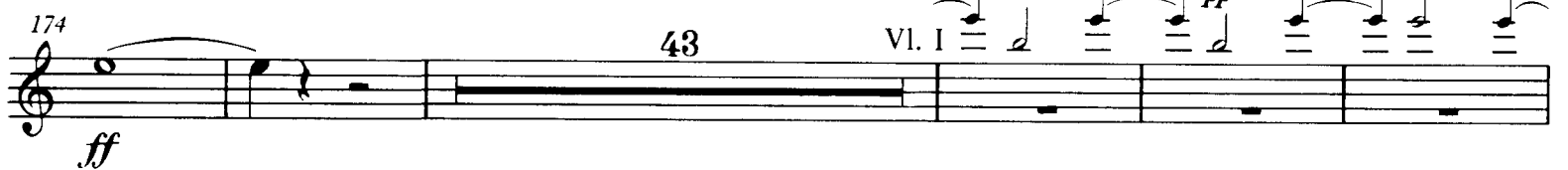
125



136



174



222



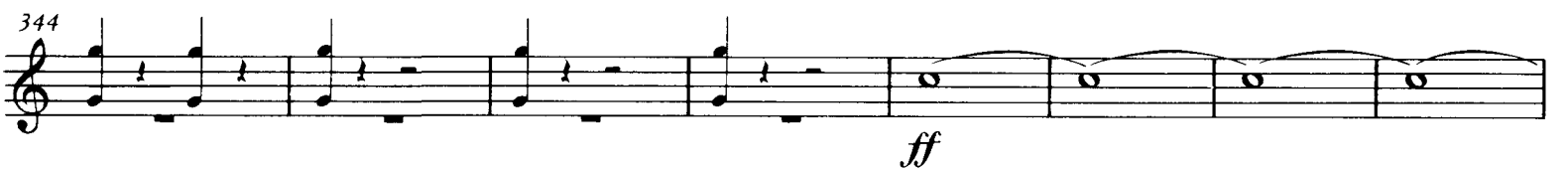
236



243



344



352

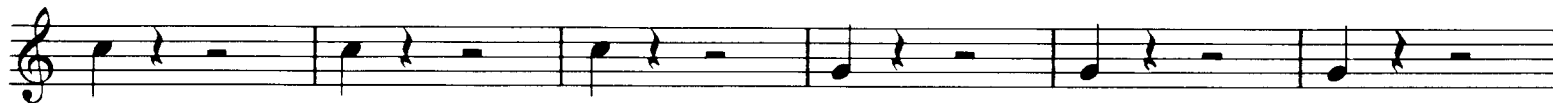


360



Trompète I

463



469



475



481



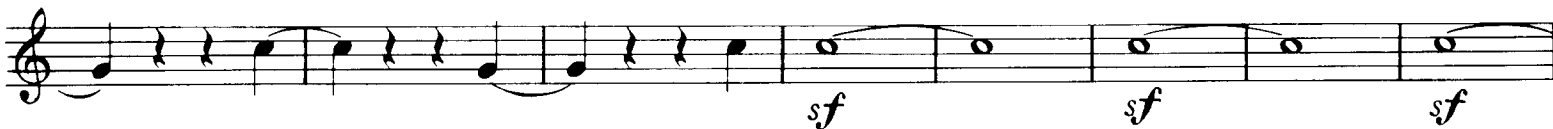
487



493



499



507



516



524



Ludwig van Beethoven
Leonore Overture No. 2, Op. 72

Tromba II in C.

Adagio.

29 Corni I. II. A

30 31 *ff*

14 Allegro. *ff* *sempre ff* 1 2 3 4 24

p cresc. poco a poco ff sf sf sf ff

5 *ff dim. p pp cresc.*

B

6 16 C 20 34 D 9

p f sf sf sf sf ff

Corni I. II. 1 10 E

10 11 12 *f f ff ff*

33 F 61 Viol. 1 1 1 1

62 63 64 65 66 67

68 69 70 *ff sf sf*

G

2

Detailed description: This is a page of a musical score for Tromba II in C. It contains ten staves of music. The first staff is marked 'Adagio.' and starts with a 3/4 time signature. It features dynamics like *ff* and *p*. A section labeled 'A' begins at measure 29, with 'Corni I. II.' above it. The second staff has a tempo change to 'Allegro.' and includes dynamics like *ff* and *sempre ff*. The third staff has a dynamic marking of *p cresc. poco a poco ff sf sf sf ff*. The fourth staff has dynamics *ff dim. p pp cresc.*. The fifth staff is labeled 'B'. The sixth staff has dynamics *p f sf sf sf sf ff*. The seventh staff is labeled 'Corni I. II.' and has dynamics *f f ff ff*. The eighth staff is labeled 'Viol. 1' and has dynamics *f sf sf p*. The ninth staff is labeled 'G' and has dynamics *ff sf sf*. The tenth staff is the final line on the page. Measure numbers 10, 11, 12, 16, 20, 24, 29, 30, 31, 33, 34, 61, 62, 63, 64, 65, 66, 67, 68, 69, 70 are indicated. Section letters A, B, C, D, E, F, G are placed above their respective measures. The page number '2' is at the bottom right.

Tromba II.

1 2 3 4

ff

5 6 7 8 1 14

Un poco sostenuto. Tempo I. Un poco sostenuto

4 8 4 Tromba I Solo

Adagio. Tempo I. Presto.

Viol. I.

6 1 2 8

fff

sf sf sf sf sf sf

sf

H 1

ff marcato

1

sf sf

1 2

sf p f fff

1 1 1