

Karl Dittersdorf  
Symphony No. 6 in D "Transformation of Phineus"

Timpani in D. A.

Andante piu tosto Allegretto. tacet.

Allegro assai. tacet.

Andante molto. tacet.

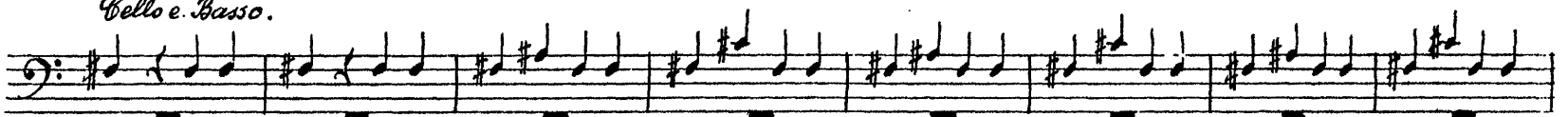
Finale.

Carl von Dittersdorf

*Vivace.*  
*Violino c. e. Basso.*

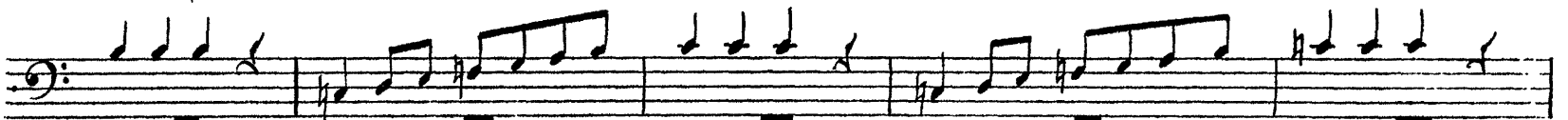


*Bello e. Basso.*

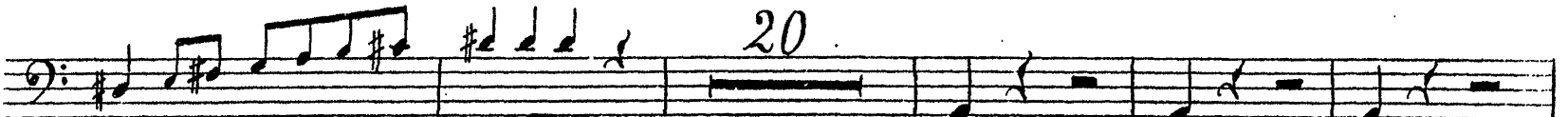


62

*Bello e. Basso.*



20



20



*Timpani in D.♯*

2.

First section of the timpani score, consisting of five staves. The first staff begins with a forte (*f*) dynamic. The second and third staves contain rhythmic patterns with *f* dynamics. The fourth staff features a long rest of 16 measures, with a 5-measure rest preceding it. The fifth staff contains a series of notes with a piano (*p*) dynamic.

*Tempo di Minuetto.*

Second section of the timpani score, consisting of seven staves. The first staff begins with a forte (*f*) dynamic and includes a 4-measure rest. The second and third staves continue with rhythmic patterns, with dynamics ranging from *f* to piano (*p*). The fourth and fifth staves feature a 4-measure rest. The sixth staff includes a 4-measure rest and ends with a piano (*p*) dynamic. The seventh staff concludes with a crescendo (*cresc.*) leading to fortissimo (*ff*).