

Ludwig van Beethoven
Consecration of the House, Op. 124

OBOE I.

Maestoso e sostenuto.

Overture.

ff sf sf sf sf pp

poco cresc. più cresc.

rinf. f piùf

A ff f

f f ff

Un poco più vivace.

1

Meno mosso.

3 p

cresc.

ff f f f

2 B 8

OBOE I.

p

Allegro con brio.

poco a poco
string.

ff *sf* *sf* *sf* *sf* *sf*

ff *sf* *sf*

ff *sf* *sf*

sf *sf* *sf* *sf* *sf*

ff *sf* *sf*

sf *sf* *sf*

p *pp*

semprep

semprepp

5

3

C

D

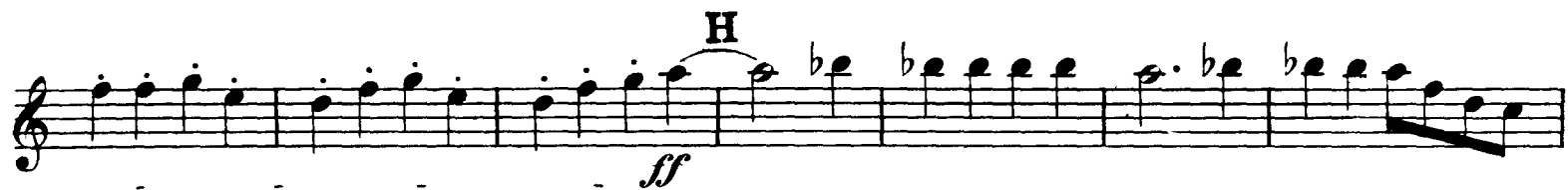
4

1 2 2

OBOE I.

The musical score for Oboe I in E major is presented across ten staves. The piece begins with a dynamic of *f* and features a melodic line with various ornaments and slurs. The first staff includes a key signature change to E major and a dynamic of *f*. The second staff continues with *sf* dynamics and a *fp* marking. The third staff shows *f* and *fp* dynamics. The fourth staff features a key signature change to F major, a *dim.* marking, a *pp* dynamic, and a *cresc.* marking. The fifth staff has a *ff* dynamic. The sixth staff continues with *sf* dynamics. The seventh staff includes a *sf* dynamic and a tempo change to *Adagio.*. The eighth staff features a *Tempo I.* marking and a *p* dynamic. The ninth staff includes a *p* dynamic, a *cresc.* marking, and a *f* dynamic. The tenth staff concludes with *sf* dynamics and a *2* marking.

OBOE I.



Ludwig van Beethoven
Consecration of the House, Op. 124

OBOE II.

Maestoso e sostenuto.

Ouverture.

ff sf sf sf sf pp 2 5

cresc. rinf f

A più f ff sf

sf sf ff

Un poco più vivace.

Meno mosso.

1 8 p cresc.

Allegro con brio.

2 B 12 5 poco a poco string. ff sf sf

sf sf sf ff 3

OBOE II.

Musical score for Oboe II, measures 1-20. The score is written on a single staff with a treble clef and a key signature of one sharp (F#). The tempo is marked with a common time signature (C). The score includes various dynamics such as *sf*, *ff*, *p*, *pp*, *f*, and *dim.*, as well as articulation marks like accents and slurs. The score is divided into measures, with measure numbers 6, 20, and 21 indicated. The score ends with a double bar line and a repeat sign.

Measures 1-5: *sf* *sf* *sf* *sf* *sf*

Measure 6: *pp* *cresc.* *ff*

Measures 7-10: *ff* *sf* *sf* *sf* *sf*

Measures 11-15: *sf* *sf* *sf* *sf* *sf*

Measures 16-19: *p* *pp*

Measure 20: *f*

Measure 21: *dim.*

OBOE II.

Adagio.

The musical score for Oboe II consists of 13 staves of music. The first staff begins with a melodic line marked with multiple *sf* (sforzando) dynamics, followed by *ff* (fortissimo) dynamics. Above the staff, the tempo is marked "Adagio." and "Tempo I." is indicated below the staff. The second staff starts with a *p* (piano) dynamic and includes a *cresc.* (crescendo) marking. The third staff begins with a *f* (forte) dynamic and features a *peresc.* (poco decrescendo) marking. The fourth staff continues with *sf* dynamics. The fifth staff has a *ff* dynamic and a *H* (hairpins) marking. The sixth and seventh staves continue with *sf* dynamics. The eighth staff features a *f* dynamic. The ninth staff begins with a *ff* dynamic, followed by *p* and *ff > p* dynamics, and a *cresc.* marking. The tenth staff continues with *sf* dynamics. The eleventh staff has a *ff* dynamic. The twelfth and thirteenth staves conclude the piece with *sf* and *ff* dynamics.