

Johann Sebastian Bach
Orchestral Suite No. 4
In D Major, BWV 1069

Oboe I

Ouverture

4

9

13

17

21

25

33

38

43

49

55

Oboe I

60

66

71

77

82

87

92

97

102

107

118

120

125

16

Oboe I

145 VI. 1

151

158

161

168

171

175

180

184

1. 2.

Bourrée I

7

16

Bourrée II

6

Oboe I

12



18

23

Bourrée I da capo

Gavotte



5



10



16



28



Menuet I
alternativement



6



12



19



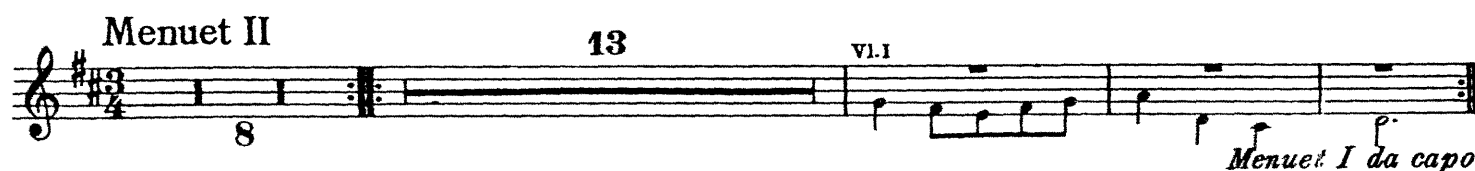
26



Menuet II

13

VI.I



8

Menuet I da capo

Oboe I

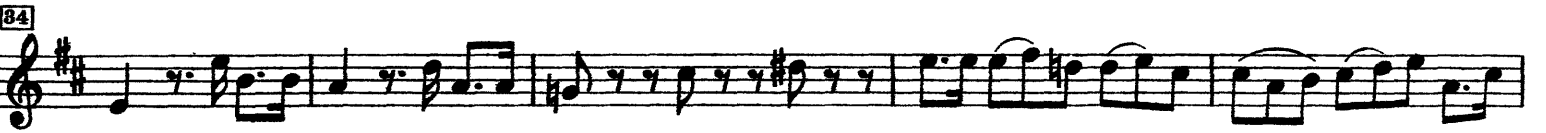
Réjouissance

The musical score for Oboe I in Suite No. 4 by J.S. Bach, titled "Réjouissance", is presented in G major and 3/4 time. The score consists of ten staves of music. The key signature has one sharp (F#) and the time signature is 3/4. The music is characterized by rhythmic patterns of eighth and sixteenth notes, often with trills (tr) and slurs. Measure numbers 4, 8, 12, 16, 20, 25, 29, 35, 40, and 45 are marked at the beginning of their respective staves. The piece concludes with a final cadence in the tenth staff.

Johann Sebastian Bach
Orchestral Suite No. 4
In D Major, BWV 1069

Oboe II

Ouverture



Oboe II

52

57

63

68

72

76

80

84

89

94

99

104

Oboe II

110

115

120

125

18

147 Ob. I

152

157

161

165

169

174

180

185

1.

2.

Detailed description: This page contains the musical score for Oboe II, measures 110 through 185. The music is written in treble clef with a key signature of two sharps (F# and C#). The score consists of ten staves of music. Measure 110 starts with a rest, followed by a series of eighth and sixteenth notes. Measure 125 features a trill (tr) on the note G4. Measure 147 is marked 'Ob. I' and begins with a grace note. Measure 165 contains a double bar line. Measure 185 includes first and second endings, with the first ending leading to a repeat sign and the second ending leading to a final cadence.

Bourrée I



Bourrée II



Bourrée I da capo

Gavotte



Oboe II

Menuet I
alternativement

Musical score for Menuet I, Oboe II part, measures 1-26. The piece is in G major and 3/4 time. It consists of a single melodic line. Measure numbers 9, 17, and 26 are indicated in boxes at the start of their respective staves. The piece concludes with a repeat sign and a fermata.

Menuet II

13

vi. I

8

Menuet I da capo

Réjouissance

Musical score for Réjouissance, Oboe II part, measures 1-42. The piece is in G major and 3/4 time. It features a single melodic line with frequent trills (tr) and slurs. Measure numbers 6, 12, 18, 24, 30, 36, and 42 are indicated in boxes at the start of their respective staves. The piece concludes with a repeat sign and a fermata.

Johann Sebastian Bach
Orchestral Suite No. 4
In D Major, BWV 1069

Oboe III

Ouverture

6

11

17

23

27

32

37

41

46

50

Oboe III

54



59



64



68



72



77



81



86



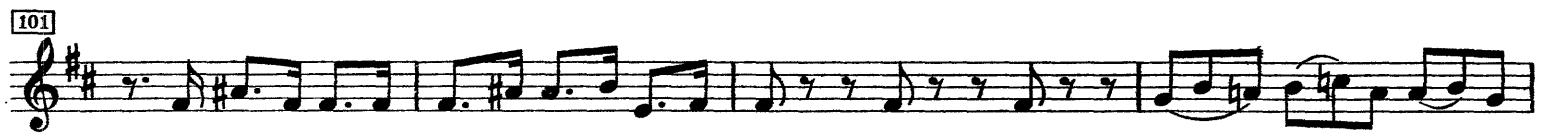
91



96



101



105



Oboe III

110

115

120

125

18

147

Ob. I

152

157

162

167

172

178

184

Oboe III

Bourrée I



Bourrée II



Bourrée I da capo

Gavotte



Oboe III

Menuet I
alternativement

Musical score for Menuet I, Oboe III part. The score consists of four staves of music in G major and 3/4 time. The first staff begins with a treble clef, a key signature of one sharp (F#), and a 3/4 time signature. The music is written in a single melodic line. The second staff starts at measure 9. The third staff starts at measure 17 and includes a trill (tr) above a note. The fourth staff starts at measure 24 and ends with a repeat sign and a fermata.

Musical score for Menuet II, Oboe III part. The score consists of a single staff of music in G major and 3/4 time. The music is written in a single melodic line. The first measure is marked with a measure rest and the number 8. The second measure is marked with a measure rest and the number 13. The third measure is marked with a measure rest and VI.I. The piece ends with a fermata. Below the staff, the text "Menuet I da capo" is written.

Réjouissance

Musical score for Réjouissance, Oboe III part. The score consists of eight staves of music in G major and 3/4 time. The music is written in a single melodic line. The first staff starts at measure 6. The second staff starts at measure 12. The third staff starts at measure 18. The fourth staff starts at measure 24. The fifth staff starts at measure 31. The sixth staff starts at measure 37. The seventh staff starts at measure 43 and ends with a repeat sign and a fermata.