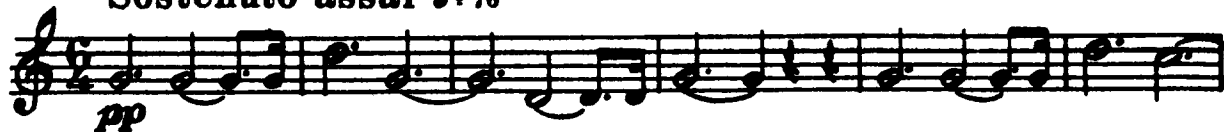


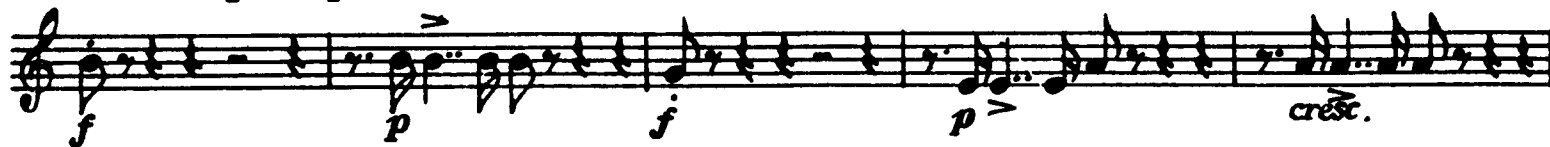
Robert Schumann
Symphony No. 2 in C Major, Op. 61

Horn I in F

Sostenuto assai $\text{♩} = 76$



A Un poco più vivace



più e più string.



Allegro vivace $\text{♩} = 144$



B



Horn I in F

sf sf

1 dim.

C p cresc. sfp

cresc. sf

f sf sf p cresc.

2. 10 p cresc. f

D 15 p

10 p sf

1 cresc. f

sempre forte

1 sf sf sf

Horn I in F

f *f* *sf* *sf*

E *Solo* 1 2 3 4 5 6 7 *cresc.*

8 9 10 11 12 13 14 15 16 17 18

F *f* *p* *f* *p* *cresc.* *al* *ff* *sf* *sf*

G

f *p*

Horn I in F

The musical score for Horn I in F consists of ten staves of music. The notation includes various dynamics and performance instructions:

- Staff 1: *cresc.*, *sf*, *cresc.*
- Staff 2: *f*
- Staff 3: *H*, *sf*, *sf*, *8*
- Staff 4: *con fuoco*, *sf*, *sf*, *sf*, *sf*, *cresc.*, *f*, *1*
- Staff 5: *f*, *sf*, *sf*, *sf*, *sf*, *sf*, *sfz*, *1*
- Staff 6: *f*, *sf*, *I*
- Staff 7: *f*, *f*, *sf*, *sf*, *f*, *sempre forte*, *1*
- Staff 8: *sf*, *sf*, *sf*, *sf*, *sf*, *sf*, *sf*, *sf*

SCHERZO
Allegro vivace ♩ = 144

Horn I in F

mf *cresc.*

f *p*

a tempo
poco rit. *f* *p*

K
cresc. *f* *f*

a tempo
poco rit. *f* *p* *cresc.*

f *f* *sfz* *p*

cresc. *f*

sfz *p*

Trio I
p

Horn I in F

12 *p* 1. 2. 1. *a tempo* *rit.* *pp* *poco rit.*

a tempo *fp* *p* *ritard.* *a tempo* *cresc. f*

L *f*

a tempo *poco rit.* *f* *p* *cresc.*

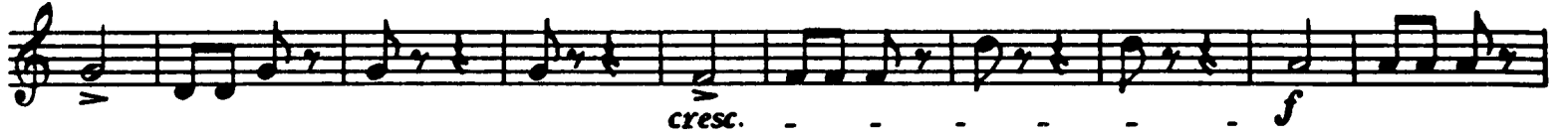
f *sf* *p* *cresc.*

f

Trio II **M** 14 25 *p* *cresc. mf* 2 15

Detailed description: This page contains the musical score for the Horn I part in F major, measures 12 through 15. The score is written on ten staves. The first staff begins at measure 12 with a first ending bracket and a second ending bracket. Dynamics include piano (p), pianissimo (pp), and fortissimo (f). Performance markings include 'a tempo', 'rit.', and 'poco rit.'. The second staff continues the melodic line with accents and slurs. The third staff features triplets and a fortissimo (fp) dynamic. The fourth staff starts at measure 13 with a piano (p) dynamic and includes 'ritard.' and 'cresc. f' markings. The fifth staff is marked with a 'L' (Lento) dynamic and fortissimo (f). The sixth staff begins at measure 14 with a piano (p) dynamic and includes 'a tempo' and 'cresc.' markings. The seventh staff continues with fortissimo (f) and sforzando (sf) dynamics. The eighth staff features a fortissimo (f) dynamic. The ninth staff continues the melodic line. The tenth staff is marked 'Trio II' and 'M' (Moderato), starting at measure 14 with a piano (p) dynamic and including 'cresc. mf' markings. Measure 15 is also indicated.

Horn I in F



Coda



Horn I in F

Adagio espressivo $\text{♩} = 76$

Solo

14
p cresc.

ten.
p
pp

sfz
sfz
p

sfz
p
poco

a poco cresc.

p
dim.
p

sfz
f
p

sfz
p

poco a poco cresc.

p
dim.
ten.
p

Horn I in F

Allegro molto vivace $\text{♩} = 170$

f *sf* *sf* *mf sf*

sf

p *p dolce*

cresc.

mf

cresc.

Horn I in F

3 3 3 2 1 Q
f

2 sf sf

1

1

3 3

1 2 3

5 6

sempre cresc.

R
f f f f p dolce p

Horn I in F

The musical score for Horn I in F consists of ten staves of music. The first staff begins with a *p* dynamic and includes markings for *p cresc.*, *p dolce*, and *p*. It features a triplet of eighth notes and a slur over a group of notes. The second staff starts with a *fp* dynamic and includes a slur over a group of notes. The third staff begins with a *f* dynamic, followed by *p* and another *f*. The fourth staff starts with *p* and includes a triplet of eighth notes and a *f* dynamic. The fifth staff contains a series of sixteenth notes with a *s* marking. The sixth staff begins with *p* and includes a slur over a group of notes. The seventh staff starts with a *cresc.* marking and includes a slur over a group of notes. The eighth staff begins with a *fp* dynamic and includes a *cresc.* marking and a slur over a group of notes. The ninth staff starts with a *cresc.* marking and includes a slur over a group of notes. The tenth staff begins with a *f* dynamic, followed by *ff*, *sfz*, *p*, and *cresc.* It includes a slur over a group of notes and a *T* marking.

Horn I in F

sempre cresc. *sempre cresc.* **3**

1 **2** *più f* **5**

più forte **5** *f* *con fuoco*

ff *p*

cresc.

cresc. al - - ff

3 **3** **3**

1 *ff* *ff* *ff* *ff*

Robert Schumann
Symphony No. 2 in C Major, Op. 61

Hom II

in C
Sostenuto assai ♩ = 76

pp

Un poco più vivace

19 *dim.* *poco cresc.* *cresc. f* *p*

27 *f* *p* *cresc.* *cresc.*

33 **marcato** *f* *sf* *sf* *sf* *p* *p*

41 *f* *p* *sf* *p* *sf* *fp* *fp* *più e più string.* *dim.*

50 **Allegro ma non troppo** ♩ = 144 *p* *cresc.* *sempre cresc.*

60 *f* *f* **B** 1 2

71 *sf* *sf* 1

79 *dim.* *p* **C**

87 *cresc.* *sfp* *cresc.*

95 *sf* *f*

103 1. 2. 11 *p* *cresc.* *sf* *sf*

Schumann — Symphony No. 2 in C Major Orchestra Musician's
CD-ROM LIBRARY

2

Corno II

117 *cresc. f*

125 **D** 18 14 2 3 *p* *p*

170 *mf* *cresc.* *f*

182 *sempre forte*

193 *sf* *sf*

203 1 *f* 1 *f* *sf* *sf*

213 **E** Solo 1 2 3 4 5 6 7 8 *p* *cresc.*

225 9 10 11 12 13 14 15 16 17 18 **F** 1 *f* *cresc.*

239 3 *f* *cresc.* *ff* *sf* *sf* 3 3 3

250 3 3 3 3 3 3 3 3

256 3 3 3 3 3 3 *sf*

263 **G** *sf* *sf*

272 *sf*

280 *f* *dim.*

288 *p* *cresc.* *sfp* *cresc.*

297 *sf* *f*

304 *H* *8* *con fuoco* *sf* *sf*

319 *sf* *sf* *cresc.* *f* *f*

328 *f* *f* *f* *f* *sf* *sf* *sf* *f*

340 *f*

351 *f* *f* *f* *sf* *sf*

363 *sempre forte*

374

382 *sf* *sf* *sf* *sf* *sf* *sf*

Schumann — Symphony No. 2 in C Major Orchestra Musician's

CD-ROM LIBRARY

4

Corno II

SCHERZO

in C

Allegro vivace ♩ = 144

mf *cresc.*

11 *f* 1. 2. *p* 2 1

20 *rit.* *a tempo* 6 *f* 1 *p* *cresc.* *f* **K**

36

47 2 1 *rit.* *a tempo* 6 *f* 1 *p* *cresc.*

66 3 1 2 3 4 *f* *f* *f* *p*

80 5 6 *cresc.* *f* **Trio I**

91 *sfz* *p* 3 3 3 3

101 12 1. 2. 1 1 *p*

120 *rit.* *a tempo* 3 3 *pp* 3 3

129 *poco rit.* *fp* *a tempo* 3 3 3 3 3 3

137 3 3 13 1 *rit.* *a tempo* 4 *cresc. f*

162 **L** *f* *cresc. f*

174 *p* 2 1 *rit.* *a tempo* 6 *f* 1

191 *p* *cresc.* *f* *sf* 3 1 *p*

204 2 3 4 5 6 *cresc.* *f*

214

Trio II

224 14 27 **M** 26 *p* *mf* *p cresc.* *mf*

300 *cresc.* *f*

311 2 1 *rit.* *a tempo* 6 *f* 1

328 *p* *cresc.* *f* *sf* 3 1 2 *p*

342 3 4 5 6 *cresc.* *f*

352 **Coda** *sempre forte*

363

375 1 *ff*

385 1

Schumann — Symphony No. 2 in C Major Orchestra Musician's
CD-ROM LIBRARY

6

Corno II

in Es
Adagio espressivo $\text{♩} = 76$

Solo

ten.

14 3 Solo

p cresc. *fp* *fp* *p* *pp*

26 *sfp*

38 *p* *N* *2* *poco -*

50 *a poco cresc.* *4* *p dim.*

62 19 1 3 *p* *f* *p* *sfp*

92 1 in C 6 *poco a poco cresc.*

108 4 1 *p dim.* *ten.* 7 *p*

in C
Allegro molto vivace $\text{♩} = 170$

f 1 *f* *f* *più f* *f* *f*

11

21

31

40 *P* *p* *2* *p dolce*

51 3 3 1 3 3 1 *cresc.*

60 *mf*

68

77 *cresc.*

86

93 1 *Q* 1 2 *f*

106 *f*

118 1 ^ ^ ^ ^ 1 ^ ^ ^ ^

134

144

153 1 2 3 4 5

164

174 *sempre cresc.*

185 *R* *f f f f* 15 *p cresc.*

210 15 16 1 1

253 4 5 27

f *p* *fp* *f*

Schumann — Symphony No. 2 in C Major

Orchestra Musician's
CD-ROM LIBRARY

8

Corno II

302 *f* *3* *3* *>* *>*

314 *>* *>* *p* *S* *p*

330 *2* *cresc.*

348 *>* *>* *>* *>* *>* *>* *>* *1* *2* *3* *4* *5* *6* *7* *8* *fi*

367 *9* *10* *11* *12* *13* *14* *15* *>* *>* *>* *>* *cresc.* *cresc.*

385 *>* *>* *1* *39* *9* *f* *f* *f* *ff* *ffz* *p* *cresc.*

447 *sempre cresc.* *3* *1*

466 *2* *cresc.* *5* *5* *più f* *più f* *f*

492 *con fuoco*

507 *ff* *p* *cresc.*

525 *cresc. al - - ff*

543

560 *3* *3* *3*

574 *1* *ffz* *f* *f* *f*