

Luigi Cherubini
Medea Overture

Corno I in F.

Allegro .

The musical score for Corno I in F consists of ten staves of music. The first staff begins with a dynamic marking of *f*. The second staff also begins with *f*. The third staff features a dynamic marking of *p* and includes rehearsal letter **A** at measure 24, with first and second endings indicated by '1' and '2'. The fourth staff includes rehearsal letters 3 through 11 and a *cresc.* marking. The fifth staff begins with rehearsal letter **B** and a dynamic marking of *f*. The sixth staff includes rehearsal letter 5 and a dynamic marking of *f*. The seventh staff includes rehearsal letters **C** 34 and **D** 39. The eighth staff begins with rehearsal letter **E** and a dynamic marking of *sf*. The ninth staff includes rehearsal letter 1. The tenth staff includes rehearsal letters **F** 34 and **G** 4, with first, second, and third endings indicated by '1', '2', and '3' respectively.

Ob. u. Clar.

Cherubini — Medea Overture
Corno I in F.

Orchestra Musician's
CD-ROM LIBRARY

1 2

18 *cresc.* H

p *p* *p*

f *f*

f *f*

cresc. *ff*

ff *ff* *ff* *ff* *ff* *ff* *ff* *ff* *ff* *ff*

Luigi Cherubini
Medea Overture

Corno II in F.

Allegro.

2 4 p $\bar{\bar{a}}$ $\bar{\bar{a}}$

3 4 5 6 7 8 *cresc.*

B

1 5

C 34 D 39 E

ff

ff

1

F 34 G 4 5 6 7 1

Ob.u. Clar.

Cherubini — Medea Overture

Corno II in F.

Orchestra Musician's

CD-ROM LIBRARY

1

2

p

18

cresc.

H

f

f

cresc.

ff

ff

ff

ff

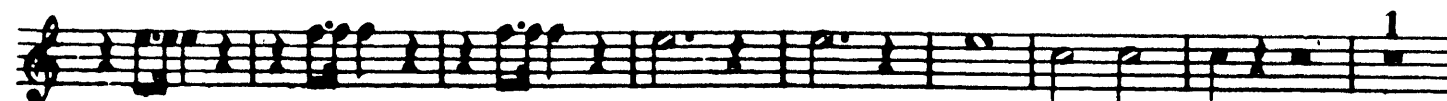
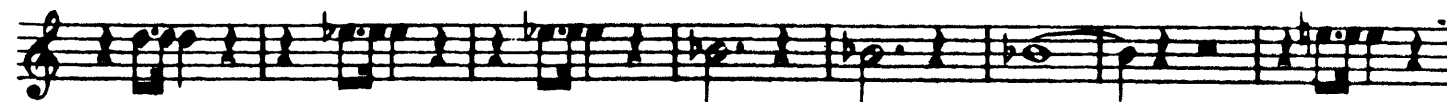
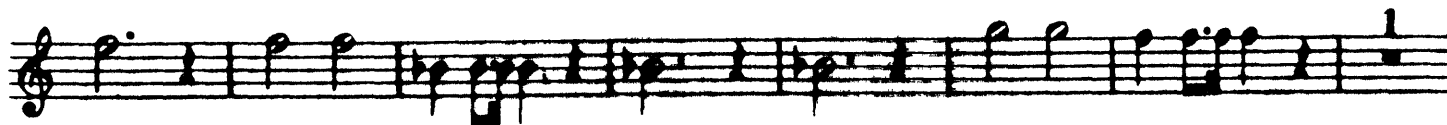
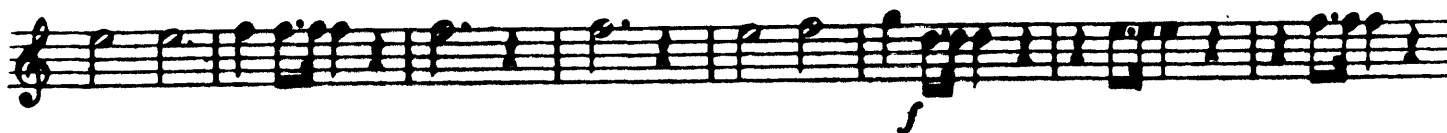
ff

ff

Luigi Cherubini
Medea Overture

Corno III in Es.

Allegro.



Corno III in Es.

F 34 G 43 44 45 H
Str. Instr.

cresc. *ff*

Luigi Cherubini
Medea Overture

Corno IV in Es.

Allegro.

The musical score for Corno IV in Es. of Medea Overture by Luigi Cherubini is presented in ten staves. The tempo is marked 'Allegro.' and the initial dynamic is *f*. The score includes various musical notations such as slurs, accents, and dynamic markings. Key features include:

- Staff 1: *f* dynamic, starting with a half note G4.
- Staff 2: *f* dynamic, featuring a triplet of eighth notes.
- Staff 3: Section marker 'A 36 B' above the staff, with *f* dynamic.
- Staff 4: First ending bracket with '1' above.
- Staff 5: Second ending bracket with '5' above.
- Staff 6: Section marker 'C 34 D4' above, with 'Ob. u. Clar.' above and '5 6 7' below. Dynamic *p* is marked.
- Staff 7: Section marker '2' above, with *p* dynamic.
- Staff 8: Section marker '16 E' above, with *f* dynamic.
- Staff 9: Continuation of the melodic line.
- Staff 10: Final staff on the page.

Cherubini — Medea Overture
Corno IV in Es.

Orchestra Musician's
CD-ROM LIBRARY

2

F 34 G 43 44 45 H
Str. Instr. *f*

cresc. *ff*

1 2 3 4 5 6