

Peter Ilyich Tchaikovsky  
Symphony No. 3 in D Major, Op. 29

Flöte 1

I  
Introduzione ed Allegro

*Moderato assai (Tempo di marcia funebre)* **A** *Poco stringendo* *Poco più mosso*

16 16 8 *Fag. 1,2* *pp* *p*

11 *Klar. 1* *pp* *pp*

**B** *Poco a poco accelerando* *Ob. 1* *Klar. 1* *mf* *mf cresc.* *Molto più mosso*

8 4 1

*f* *f*

*Allegro brillante*

*f* *cresc.* *ff*

**C** 4 *p*

2 1 *p* *p*

*mf* *cresc.* **D**

1

Flöte 1

*f*

*rit.* *E poco meno mosso* *Ob. 1 Solo* *Solo* *p*

*espr.* *F* *5* *Fag. 1*

*p* *Tempo I*

*mf*

*mf* *cresc.*

*cresc.*

*ff*

*f*

*ff* *mf* *f* *ff*



Flöte 1

The musical score for Flute 1 is written in D major and 4/4 time. It consists of 12 staves of music. The first staff begins with a fortissimo (*ff*) dynamic and includes fingering numbers 1 and 0. The second staff continues with *ff*. The third staff features a piano (*p*) dynamic. The fourth staff has a piano (*p*) dynamic and includes fingering numbers 4, 2, and 1. The fifth staff has a piano (*p*) dynamic and includes fingering numbers 9 and R. The sixth staff has a mezzo-forte (*mf*) dynamic. The seventh staff has a mezzo-forte (*mf*) dynamic and includes a crescendo (*cresc.*) and a forte (*f*) dynamic. The eighth staff has a forte (*f*) dynamic and includes a crescendo (*cresc.*). The ninth staff has a fortissimo (*fff*) dynamic and includes a trill marked with 'T' and '6'. The tenth staff has a fortissimo (*fff*) dynamic. The eleventh staff has a mezzo-forte (*mf*) dynamic and includes a forte (*f*) dynamic. The twelfth staff has a mezzo-forte (*mf*) dynamic and includes a crescendo (*cresc.*).

Flöte 1

*f* *cresc.*

*fff*

*V* *Più mosso*

*f* *cresc.* *ff*

*W* *f* *cresc.* *ff*

*fff*

## Flöte 1

II  
Alla tedesca*Allegro moderato e semplice*

2 Solo  
*p grazioso*

A *tr*

*cresc.* *mf* B

*mf* 1 Solo *p*

*cresc.* 2 C 8 *p cresc.*

2

Trio  
*L'istesso tempo*

*p*

D 2 3

*p*

1 3

*p*

Flöte 1

2 3 1 3

*p* *p*

*p espr.*

3 1 3

*p* *p*

3 F 6 Viol. 1. 3

*p*

G

*p*

6 H 8

*p*

*cresc.*

*mf* *mf*

*p*

*cresc.*

Flöte 1

K 8

*p cresc.*

*mf f*

*dim.*

*p pp*

III  
Andante

*Andante elegiaco*

*f molto espress.*

*mf*

*Hr. I B molto espress.*

*mf > pp p*

*p cresc.*

*mf p cresc.*

*mf f*

*p p*



Flöte 1

This page contains the musical score for Flute 1, measures 11 through 20. The score is written in treble clef with a key signature of one flat (B-flat). It includes parts for Viola, Violin 1, and Horn 1. The Flute 1 part begins in measure 11 with a C major chord and a melody of eighth notes. It moves to D major in measure 13 and E major in measure 15. The Flute 1 part features various dynamics including *p*, *mf*, *mf espr.*, *p cantabile*, *staccato*, *mf*, *cresc.*, *f*, *mf*, *cresc.*, *f*, and *pp*. The Viola part has a *p* dynamic. The Violin 1 part has a *p* dynamic. The Horn 1 part has a *pp* dynamic. The score includes various musical notations such as slurs, accents, and dynamic markings.

Flöte 1

IV  
Scherzo

*Allegro vivo* A *ob.1*

20

*p* *piüf*

*p* *piüf* *mf*

*pp*

*p* *piüf* *cresc.*

*mf* *f*

*f*

*mf*

*p* 11



Flöte 1

2 2 2

*cresc.*

*mf* *mf*

*f* *f*

*mf*

*p* 11

*P<sub>Nr. 1</sub>* *f* *p* 3 *p* 3

*pp* 1 1 5

*pp* *pp* 5 *pp*

Detailed description: This block contains the first 11 measures of the Flute 1 part. It begins with a treble clef and a key signature of two sharps (D major). The first measure has a '2' above it. The second measure has a '2' above it. The third measure has a '2' above it. The fourth measure has a '2' above it. The fifth measure has a '0' above it. The sixth measure has a '7' above it. The seventh measure has a '7' above it. The eighth measure has a '7' above it. The ninth measure has a '7' above it. The tenth measure has a '7' above it. The eleventh measure has a '7' above it. The score includes dynamic markings: *cresc.*, *mf*, *f*, *mf*, *p*, *f*, *pp*, *f*, *p*, *pp*, *pp*, and *pp*. There are also fingerings indicated by numbers 1, 2, 3, 5, and 7. A first ending bracket labeled '11' spans the last two measures. A section marker 'P<sub>Nr. 1</sub>' is placed above the eighth measure.

V  
Finale

*Allegro con fuoco (tempo di Polacca)*

*ff*

*ff*

Detailed description: This block contains the first two measures of the Finale section. It begins with a treble clef and a key signature of two sharps (D major). The first measure has a '3' above it. The second measure has a '4' above it. The score includes dynamic markings: *ff* and *ff*. There are also fingerings indicated by numbers 1, 2, 3, 4, 5, and 7.

The musical score for Flute 1 is written in D major and consists of 11 staves. The notation includes various dynamics such as *ff*, *f*, *mf*, and *cresc.*. Fingerings are indicated with numbers 1 and 5. The score features complex rhythmic patterns, including sixteenth and thirty-second notes, and melodic lines with slurs and accents. The music is characterized by its intricate texture and dynamic range.

Flöte 1

The musical score for Flute 1 is written in D major and consists of 11 staves. The key signature has two sharps (F# and C#). The score includes various dynamics and performance markings:

- Staff 1: *ff*, marking **G**
- Staff 2: *p*, marking **H**, fingering **5**
- Staff 3: *p*, fingering **1**
- Staff 4: *p*, fingering **3**
- Staff 5: *mf*, fingering **7**
- Staff 6: *p*, *p*, *ff*, markings **4**, **1**, **3**, **8**, **I**
- Staff 7: *ff*
- Staff 8: *ff*
- Staff 9: *f*, marking **K**, fingering **3**
- Staff 10: *f*
- Staff 11: *f*

The musical score for Flute 1 in Tchaikovsky's Symphony No. 3 in D Major, Op. 29, consists of 11 staves of music. The key signature is D major (two sharps) and the time signature is 3/4. The score includes various dynamics such as *f*, *ff*, and *f1.2*, as well as articulation markings *L*, *M*, and *N*. Fingerings are indicated with numbers 1, 2, and 3. The piece concludes with a *ritenuto molto* marking and a first ending bracket labeled '1'.

Flöte 1

*Meno mosso*  
*ff*

*P* *Tempo I*  
*ff*

*R Presto*

1 2 3  
4 5 6 7 8 9 1



Peter Ilyich Tchaikovsky  
Symphony No. 3 in D Major, Op. 29

Flöte 2

I

Introduzione ed Allegro

**A**  
*Moderato assai (Tempo di marcia funebre)* *Poco stringendo* *Poco più mosso*

16 16 11 4 8 4 10 1

*Fag. 1, 2* *pp* *p* *pp* *pp* *f* *f* *mf* *cresc.* *pp* *mf* *cresc.*

*Klar. 1* *Ob. 1*

*Allegro brillante*

Flôte 2

*f* *ff*

*rit.* *E poco meno mosso*

4 19

F 5 *Fag. 1* *p*

G *Tempo I* 6 *mf*

*mf* *cresc.*

*cresc.*

*ff*

H 6 *ff* *mf* *f* *ff* *mf*

*f* *p* *f marc.*

K#

The musical score for Flute 2 in Tchaikovsky's Symphony No. 3 in D Major, Op. 29, consists of ten staves of music. The key signature is D major (two sharps) and the time signature is 4/4. The score includes various dynamics such as *ff*, *f*, *p*, and *cresc.*. Performance markings include *M 3*, *N*, and *L*. The music features a variety of rhythmic patterns, including eighth and sixteenth notes, and rests. Fingerings and breath marks are indicated throughout the score.

Flöte 2

0  
*ff*

10  
*p*

1  
*p*

R  
*p* *mf*

*mf* *cresc.* *f*

*f* *cresc.*

S  
*fff*

T  
*mf* 6 1 1

*f* *mf* *cresc.*

The musical score for Flute 2 in Tchaikovsky's Symphony No. 3 in D Major, Op. 29, page 5, is written in D major and 4/4 time. The score consists of ten staves of music. The first staff begins with a dynamic of *f* and a *cresc.* marking. The second staff features a *fff* dynamic. The third staff continues with *fff*. The fourth staff is marked *Più mosso* and begins with a *f cresc.* dynamic, followed by a *ff* dynamic. The fifth staff is marked *ff*. The sixth staff is marked *f cresc.* and *ff*. The seventh staff is marked *ff*. The eighth staff is marked *fff*. The ninth staff is marked *fff*. The tenth staff is marked *fff*. The score includes various performance markings: *f*, *cresc.*, *fff*, *ff*, *f cresc.*, *Più mosso*, *V*, *W*, and *Z*. The music includes complex passages with triplets and sixteenth-note runs.

Flöte 2

II  
Alla tedesca

The musical score for Flute 2, II Alla tedesca, measures 15-19, is presented on ten staves. The key signature is D major (two sharps) and the time signature is 4/4. The tempo is marked *Allegro moderato e semplice*. The score includes various musical notations such as slurs, accents, and dynamic markings. Measure numbers 15, 17, 18, and 19 are indicated. Section markers A, B, C, D, E, F, G, and H are placed above the staves. Performance instructions include *mf*, *p*, *espr.*, and *Trio*. The Trio section begins at measure 19 with the instruction *L'istesso tempo*. Specific figures are noted as *Fig. 1* and *Fig. 2, Vcll., Kb.*. The score concludes with a *p* dynamic marking.

Musical score for Flute 2, measures 15-19. The score is written in treble clef with a key signature of two flats (B-flat and E-flat). Measure 15 is marked with a forte dynamic (**f**) and a crescendo (*cresc.*). Measure 16 is marked with a mezzo-forte dynamic (**mf**). Measure 17 is marked with a piano dynamic (**p**) and a crescendo (*cresc.*). Measure 18 is marked with a mezzo-forte dynamic (**mf**) and a decrescendo (*dim.*). Measure 19 is marked with a pianissimo dynamic (**pp**). The score includes various musical notations such as slurs, accents, and dynamic markings.

III  
Andante

Musical score for Flute 2, measures 8-11. The score is written in treble clef with a key signature of two flats (B-flat and E-flat). Measure 8 is marked with a forte dynamic (**f**) and the instruction *molto espress.*. Measure 9 is marked with a mezzo-forte dynamic (**mf**) and the instruction *molto espress.*. Measure 10 is marked with a piano dynamic (**p**) and the instruction *molto espress.*. Measure 11 is marked with a piano dynamic (**p**). The score includes various musical notations such as slurs, accents, and dynamic markings.

Flöte 2

Viol. 1  
Viola

1

*p* *mf* *mf*

*mf cresc.*

2 *E*

*p cantabile*

*p*

*staccato*

*mf* *cresc.*

*f*

*mf* *cresc.*

*f*

*mf* *p*

10 *G* *Hr. 1* 4

*mf* *dim.* *p* *p*

8 10 *Hr. 1*

*pp* *pp*



Flöte 2

IV  
Scherzo

*Allegro vivo* A 8 Fl. 2 14 Klar. 2 B *cresc. poco*

20

Klar. 1 7 7 Klar. 2 7 7 Klar. 2 *p* 2

*più f* *mf* 2 2 C 8 Viol. 2 *f* Vla. *poco cresc.* *p*

Viol. 2 *p* 2

*più f* *cresc.* *mf* 2

D *f*

*f*

*f*

E *mf*

12

Flöte 2

Trio

*L'istesso tempo*

8 *Hr. 1* *mf* *p* *p*

*Fl. 1* *F* *p* *Fg. 1* *Hr. 3* *p* 9

*G* *p* 3 *p*

4 *p* *H* *poco più f* 1

1 1 1

24 *Hörner* *f* 3 3

1 *Vcl., Kb. pizz.* *f*

*L'istesso tempo* *p*

4 *L* 24 *M* *Klar. 1*

*Klar. 1* *Klar. 2* *poco cresc.* *Klar. 2* *p* 2

The image shows a page of a musical score for Flute 2, page 11. The score is written in treble clef with a key signature of one sharp (F#) and a 3/4 time signature. The music consists of ten staves of notation. The first staff begins with a *piüf* dynamic marking and includes fingerings (2, 2) and a breath mark (N). The second staff has a *cresc.* marking. The third staff has *mf* markings. The fourth staff has a *f* marking. The fifth and sixth staves have *f* markings. The seventh staff has a *mf* marking. The eighth staff has a *p* marking. The ninth staff has a *pp* marking. The tenth staff has *pp* markings and includes a *Viol. 1* marking. The score includes various musical notations such as slurs, accents, and dynamic markings. The page number 11 is visible in the top right corner.

Flöte 2

V  
Finale

*Allegro con fuoco (tempo di Polacca)*

The musical score for Flute 2 in the finale of Tchaikovsky's Symphony No. 3 is written in D major and 3/4 time. It begins with the tempo marking *Allegro con fuoco (tempo di Polacca)*. The score consists of 11 staves of music. The first staff starts with a fortissimo (*ff*) dynamic. The second staff contains section marker A and another *ff* dynamic. The third staff continues the melodic line. The fourth staff contains section marker B. The fifth staff continues the melodic line. The sixth staff contains section marker C and a fortissimo (*ff*) dynamic. The seventh staff contains section marker D and a fortissimo (*ff*) dynamic. The eighth staff contains a fortissimo (*ff*) dynamic. The ninth staff contains a fortissimo (*ff*) dynamic. The tenth staff contains a mezzo-forte (*mf*) dynamic. The eleventh staff contains a mezzo-forte (*mf*) dynamic. The score includes various rhythmic patterns, including eighth and sixteenth notes, and rests. The dynamics range from fortissimo (*ff*) to mezzo-forte (*mf*).

The musical score for Flute 2 in Tchaikovsky's Symphony No. 3 in D Major, Op. 29, page 13, consists of 12 staves of music. The key signature is D major (two sharps). The score includes various dynamics and articulations:

- Staff 1: *f*, **E**
- Staff 2: *cresc.*, *ff*
- Staff 3: *ff*, **F**
- Staff 4: *ff*, **5 G**
- Staff 5: *p*, **H**, **5**
- Staff 6: *p*, **1**
- Staff 7: *mf*
- Staff 8: *p*, **6**, **8**, **I**, *ff*
- Staff 9: *ff*
- Staff 10: *ff*
- Staff 11: **K**, **3**

Flöte 2

*f*

*f*

*f*

*L* 8

*ff* *Ob. 2* *Ob. 1* *ff*

*ff* *M* 1

2 1 1

*ff*

*N* 3 3 3 3

*ff*

*ritenuto molto* *Meno mosso*

1 *fff*

**P**  
*Tempo I*  
*fff*

**R** *Presto*

1 2 3 4 5 6  
7 8 9 10 11 12 1

Peter Ilyich Tchaikovsky  
Symphony No. 3 in D Major, Op. 29

Kleine Flöte

I  
Introduzione ed Allegro

**A** *Moderato assai (Tempo di marcia funebre)* *Poco stringendo* *Poco più mosso*

16 16 1 23

**B** *Poco a poco accelerando* *Molto più mosso* *Allegro brillante* **C** 5 *Fl. 1*

15 8 15

*p* *p*

*mf*

**D** 10 *Fl. 1* *str.* *ff*

*rit.* **E** *poco meno mosso* **F** 12 **G** *Tempo I* 13

*mf* *cresc.*



Kleine Flöte

mf *cresc.*

*ff*

*ff* *mf* *mf* *f*

*ff* *mf* *f* *f*

*ff* *f* *ff* *f*

*ff* *ff*

*ff* *ff*

*p* *p*

3 H 6 Fag. I  
Vel. *ff* *mf* *mf* *f*

3 4 K 22 L 10 Ob. I *f*

*ff* *mf* *f* *f* 8 M 3 *ff* *f*

3 N 8 Fl. I *ff* *f* 9

Fl. I *ff* *ff* 0 Str.

P 10

Fl. I *p* *p* 10

R 24

Fl-1

S

fff

T 15

Fl-2

f cresc.

U

fff

V Più mosso

4 ff

W 4

ff

Z

5

ff

fff

ff

Kleine Flöte

II  
Alla tedesca

*Allegro moderato e semplice* A 18 B 18 C 25 D 21 E 20 F 10 G 17 H 34 J 25 K 21 L 16 M 39

Trio *L'istesso tempo* D 2

Fl. 1, 2

*p*

*vcll. Kb.*

*p*

*p*

III  
Andante

*Andante elegiaco* A 18 B 32 C 21 D 15 E 28 F 16 G 34

IV  
Scherzo

*Allegro vivo* A 24 B 16 C 28 D 20 E 12 F 16 G 31 H 24 K 24

Trio *L'istesso tempo*

Fl. 1, 2

*f*

Ob. 1, 2

*p*

*f*

Hörner

*L'istesso tempo*

*p*

*mf*

*p*

*pp*

Vcll., Kb. pizz.

Fl. 1, 2

Ob. 1, 2

Pos. 1

Viol. 1

4

8

16

24

28

11

32

V  
Finale

*Allegro con fuoco (tempo di Polacca)*

*f*

*A*

*B*

*C*

3

4

23

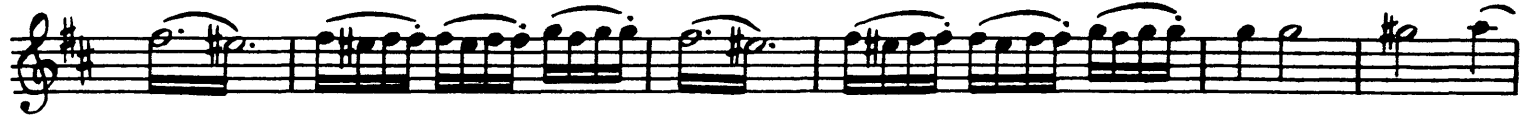
Kleine Flöte

D 24 E 19 F 10 G Fl. 1, 2  
ff  
ff  
40 I Fl. 1, 2  
ff  
ff  
K 19  
L 24 Fl. 1, Viol. 1 M  
ff ff  
6 1 1  
ff  
1  
N 8 *riten. molto*  
1  
0 *Meno mosso*  
3  
ff

Kleine Flöte



**P** *Tempo I*



**R** *Presto*

