

Franz Joseph Haydn  
Symphony No. 86

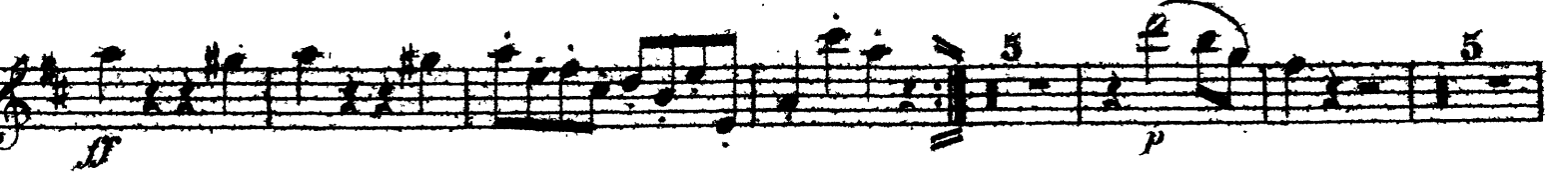
Flauto.

Adagio.

Viol.



Allegro spiritoso.



# Flauto.

This page contains the musical score for the Flute part of Haydn's Symphony No. 86, page 2. The score is written on 14 staves in treble clef with a key signature of one sharp (F#). The music features a variety of rhythmic patterns, including sixteenth-note runs and triplet figures. Dynamic markings include *p*, *dimin.*, *pp*, *f*, and *ff*. Performance instructions such as *arco* and *tr.* are present. The score includes several key signatures: C major (C), D major (D), E major (E), and F major (F). The piece concludes with a final chord in G major (G).

# Flauto.

## CAPRICCIO.

Largo.

This page contains the musical score for the Flute part of the Capriccio movement from Haydn's Symphony No. 86. The score is written in treble clef with a key signature of one sharp (F#) and a time signature of 3/4. The tempo is marked 'Largo'. The score consists of 12 staves of music. The first staff begins with a 'Viol.' marking and a dynamic of *p*. The second staff has a 'H' marking and a dynamic of *p*. The third staff has a 'I' marking and a dynamic of *f*. The fourth staff has a 'K' marking and a dynamic of *p*. The fifth staff has a 'L' marking and a dynamic of *f*. The sixth staff has a 'M' marking and a dynamic of *p*. The seventh staff has a dynamic of *p*. The eighth staff has a 'N' marking and a dynamic of *f*. The ninth staff has a dynamic of *p*. The tenth staff has a dynamic of *f*. The eleventh staff has a dynamic of *p*. The twelfth staff has a dynamic of *f*. The score includes various dynamic markings such as *p*, *f*, *sf*, *pp*, *cresc.*, and *dimin.*, as well as articulation marks like accents and slurs. The piece concludes with a final *f* dynamic.

# Flauto.

## MENUETTO.

*Allegretto.*

Musical score for Flute part of the Minuet, measures 1-14. The score is written on a single staff in treble clef with a key signature of one sharp (F#) and a 3/4 time signature. It begins with a forte (*f*) dynamic and features a series of eighth-note patterns with slurs. Dynamics include *f*, *p*, and *dimin.* (diminuendo). A measure rest of 6 measures is indicated at measure 6. The section concludes with a *mp* (mezzo-piano) dynamic and a *f* (forte) dynamic.

## Trio.

15

Ob. I.

Musical score for Flute part of the Trio, measures 15-24. The score is written on a single staff in treble clef with a key signature of one sharp (F#) and a 3/4 time signature. It begins with a *p* (piano) dynamic and features a series of eighth-note patterns with slurs. Dynamics include *p*, *dimin.* (diminuendo), *p*, and *pp* (pianissimo). A measure rest of 4 measures is indicated at measure 19. The section concludes with a *pp* dynamic. The text "Men. D. C." (Molto Diminuendo al Fine) is written at the end of the staff.

## FINALE.

*Allegro con spirito.*

Viol. II

Musical score for Flute part of the Finale, measures 1-6. The score is written on a single staff in treble clef with a key signature of one sharp (F#) and a common time (C) signature. It begins with a *f* (forte) dynamic and features a series of eighth-note patterns with slurs. Dynamics include *f* and *pp* (pianissimo). A measure rest of 6 measures is indicated at measure 6.

Flauto .

*cresc. sempre*

*p*

*sf*

*Q 13*

*R*

*ritard.*

*a tempo.*

*Viol. I.*

*Viol. II.*

6

Flauto.

The musical score for the Flute part in Haydn's Symphony No. 86, page 65, is written in G major and 3/4 time. It consists of ten staves of music. The notation includes various dynamics such as *p* (piano) and *f* (forte), as well as articulation like slurs and accents. Specific fingering instructions are marked with letters: *V 5*, *W*, *X*, and *Y 3*. A *dimin.* (diminuendo) marking is also present. The score shows a variety of rhythmic patterns, including eighth and sixteenth notes, and rests.