

J.S. Bach
St. John Passion
FLAUTO I.

Erster Teil.

Nº1. Chor.

10

20

29

37

46

55

64

70

79

88

f

p

(Fine)

p

Da Capo.

FLAUTO I.

Musical score for Flauto I, measures 84-182. The score is written in treble clef with a key signature of one flat (B-flat). The music consists of continuous sixteenth-note passages, often grouped in pairs or fours. Measure numbers are indicated in boxes at the beginning of each line: 84, 49, 50, 58, 67, 78, 81, 88, 95, 101, 109, 117, 125, 182. Dynamic markings include *f* (forte) and *p* (piano). Performance instructions include *tr* (trill) and *1* (first ending). The score is divided into sections labeled with letters: C (measures 84-94), D (measures 95-100), E (measures 101-108), F (measures 109-116), G (measures 117-124), H (measures 125-132), I (measures 133-140), K (measures 141-148), L (measures 149-156), and M (measures 157-182). A final measure number '2' is present at the end of the line for measure 182.

FLAUTO I.

141 N
p

148

158

Nº14. Recit. 44 Nº15. Choral. 1

Der-selbige Jün-gor war dem was schlä-gest du mich?

Nº16. Recit. 4 Nº17. Chor. Allegro. 1

da spra-chen sie zu ihm: f

11 A

17

Nº18. Recitativ. Nº19. Arie (für Tenor) tacet.

Nº20. Choral.

7

12

Ende des ersten Theils.

Zweiter Teil.

Nº21. Choral.

Musical notation for No. 21 Choral, measures 1-12. The piece is in C major, 4/4 time. It features a simple, homophonic setting of the text. The melody is primarily eighth and quarter notes, with some rests. The bass line provides a steady accompaniment.

Nº22. Recit.

Nº23. Chor.

Musical notation for No. 22 Recit. and No. 23 Chor., measures 9-84. The recitative (No. 22) is in C major, 4/4 time, and is characterized by a simple, declamatory style. The chorus (No. 23) is in C major, 4/4 time, and features a more complex, rhythmic setting of the text. The piece is marked *ff* (fortissimo). The text is: "Sie antwor-te-ten und spra-chen zu ihm: *ff*". The notation includes various ornaments and dynamic markings. The piece is divided into sections A, B, and C. Section A starts at measure 13, section B at measure 22, and section C at measure 30. The piece concludes at measure 84.

6

FLAUTO I.

39 N^o 24. Recit. N^o 25. Chor. D

Da spra - chen die Ju - den zu ihm: *f*

44

47

50 E

53

56

59 N^o 26. Recit. N^o 27. Choral. ¹ *tr*

20 nun ist mein Reich nicht von dannen.

4

18 N^o 28. Recit. N^o 29. Chor. *f*

da schriean sie wieder allesammt und sprachen:

22 N^o 30. Recit. 5

N^o 31. Arioso (für Bass). N^o 32. Arie (für Tenor) tacet.

4 N^o 33. Recit. N^o 34. Chor. *f*

und spra - chen:

7

9 A

FLAUTO I.

12

14

16

Nº 35. Recit. 11

Nº 36. Chor.

und die Die-ner sa - hen, schrieen sie und

32

37

42

47

53

Nº 37. Recit. 3

Nº 38. Chor. 2

Die Ju-den ant-svor-te-ten ihm:

62

67

72

77

82

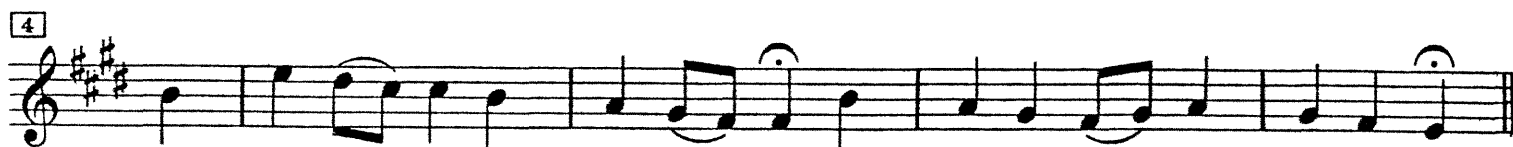
Nº 39. Recit. 16

87

wie er ihn los-lie-sse.

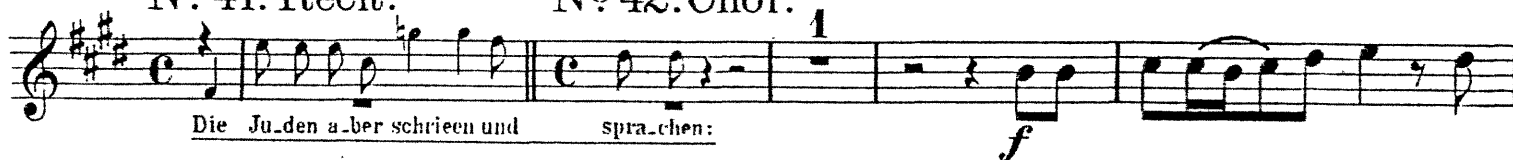
FLAUTO I.

Nº 40. Choral.



Nº 41. Recit.

Nº 42. Chor.



FLAUTO I.

80

Nº 43. Recit.

Nº 44. Chor.

84

das ist eu-er Kö-nig. Sie schrieen a-ber: *f*

48

49

53

57

60

63

66

Nº 45. Recit.

70

Die Ho-hen-prie-ster antworteten:

10

FLAUTO I.

75

Nº 46. Chor.

77

Nº 47. Recit.

Nº 48. Arie (mit Chor) tacet.

Nº 49. Recit.

16

Nº 50. Chor.

Da sprachen die Hohen-priester der Ju-den zu Pi-la-to:

19

21

28

25

27

Nº 51. Recit.

2

Nº 52. Choral.

1

Ich ge-schrie-ben.

4

Nº 53. Recit.

8

Nº 54. Chor.

1

Da sprachen sie un-ter ein-ander:

FLAUTO I.

18 A 1

18

22 B

27

31 C

35

39 D

43 E

48

52 F

56

60

12

Nº 55. Recit.

FLAUTO I.

Nº 56. Choral.

65 18

das ist dei-no Mut-ter!

5

11

Nº 57. Recitativ. Nº 58. Arie (für Alt) tacet.
 Nº 59. Recitativ. Nº 60. Arie (mit Chor) tacet.

Nº 61. Recit

Nº 62. Arioso (für Tenor)

Adagio.

6

Lei-ber der Heili-gen!

p

Nº 63. Arie. (für Sopran.)

p

6

13

18

25

30

35

41

50

A

B

C

D

E

3

FLAUTO I.

Musical score for Flauto I, measures 58-121. The score is written in treble clef with a key signature of two flats (B-flat and E-flat). The music consists of a single melodic line with various dynamics and articulations. Measure numbers are indicated in boxes at the beginning of each line: 58, 61, 68, 73, 78, 83, 89, 94, 100, 106, 110, 116, and 121. Dynamics include *p* (piano), *f* (forte), and *tr* (trill). Articulations include slurs, accents, and fingerings (1, 2). The piece concludes with a trill in measure 121.

№ 64. Recitativ.

„...in welchen sie gestochen haben!“

FLAUTO I.

Nº 65. Choral.

Nº 66. Recit.

23

Nº 67. Chor.

die-weil das Grab na-he war:

p

FLAUTO I.

53

59

E 7 F 4

(Fine.)

75

G

84

H

91

I

98

K 7

110

L 7 M 4

Dal Segno.

Nº 68. Choral.

6

11

16

Endé.

J.S. Bach
St. John Passion

Nº1. Chor. FLAUTO II.

9

17

25 A

33 B

42 C D

50 (Fine)

59 E p

68 1 F 1

71 G p

80 2 H

87 Da Capo.

FLAUTO II.

Nº 2. Recit. Nº 3. Chor.

16

Wen su - chet ihr? Sie ant - wor - te - ten *f*

Nº 4. Recit. Nº 5. Chor.

21

7

4

Wen su - chet ihr? Sie a - ber

Nº 6. Recit. Nº 7. Choral.

35

4

1

p

Nº 8. Recitativ.

„...den mir mein Vater gegeben hat?“

Nº 9. Choral.

Nº 10. Recitativ. Nº 11. Arie (für Alt) tacet.

Nº 12. Recit. Nº 13. Arie (für Sopran.)

2

1

und ein an - d'rer Jün - ger. *f*

FLAUTO II.

Musical score for Flauto II, measures 39-182. The score is written in treble clef with a key signature of one flat (B-flat). The music consists of a single melodic line with various dynamics and articulations. The measures are numbered in boxes on the left side of the staff. The score includes the following measures and markings:

- Measure 39: Start of the section.
- Measure 87: *f* dynamic marking.
- Measure 91: *p* dynamic marking.
- Measure 99: *f* dynamic marking.
- Measure 108: *f* dynamic marking.
- Measure 116: *p* dynamic marking.
- Measure 124: *p* dynamic marking.
- Measure 182: *p* dynamic marking.

The score also includes several letter markings (C, D, E, F, G, H, I, K, L, M) placed above the staff, likely indicating specific notes or chords. The music features a variety of rhythmic patterns, including eighth and sixteenth notes, and rests. The overall texture is melodic and expressive.

FLAUTO II.

111 N
147 *p*
156 *f*

163 **Nº 14. Recit.** 44
Der-sel-bi-ge Jün-ger war dem Was schlä-gest du mich?

Nº 15. Choral.
5

10 **Nº 16. Recit.** 4
Da spra-chen sie zu

6 **Nº 17. Chor. Allegro.**
ihm: 1
12 A
17

Nº 18. Recitativ. Nº 19. Arie (für Tenor) tacet.

Nº 20. Choral.
7
12
Ende des ersten Theils.

Zweiter Teil.

Nº 21. Choral.

6

12

Nº 22. Recit.

Nº 23. Chor.

9

Sie ant-wor-te - ten und spra-chen zu ihm: *ff*

12

16 A

21

25 B

29 C

32

35

FLAUTO II.

89 N^o 24. Recit. N^o 25. Chor. *f* **D**

Da sprach die Ju - den zu ihm:

44

46

48

50

52 **E**

54

56

59 N^o 26. Recit. N^o 27. Choral. **1** *ff*

20

nun ist mein Reich nicht von dannen.

4

N^o 28. Recit. N^o 29. Chor. *f*

18

da schrieen sie wie - der al - le - sammt und sprachen:

21 N^o 30. Recit. **5**

Nº 31. Arioso (für Bass) Nº 32. Arie (für Tenor) tacet.

Nº 33. Recit. Nº 34. Chor.

4
und sprachen:

8

10 A

12

14

Nº 35. Recit. Nº 36. Chor.

11
und die Die-ner sa- hen, schreien sie und sprachen:

31

35 A

39 B

43

46 C

Nº 37. Recit.

3
die Ju- den ant-wor- te- ten ihm:

FLAUTO II.

№ 38. Chor.

57 *f* 2

64 D

68 E

73 F

78

83 G

№ 39. Recit.

88 16 wie er ihn los-lie-sse.

№ 40. Choral.

№ 41. Recit.

91 Die Ju-den a-ber schrie-en und

№ 42. Chor.

92 sprachen. 1 *f*

97

101 A

FLAUTO II.

18 

21 

27 

32 

No. 43. Recit.

das ist eu.er König. Sie schrieen

45 

No. 44. Chor.


a.ber:

50 

55 

60 

64 

70 

No. 45. Recit.

die Ho. hen . priesterantwor. te . ten:

75 

No. 46. Chor.

77 

No. 47. Recit.

FLAUTO II.

Nº 48. Arie (mit Chor) tacet.

Nº 49. Recit. Nº 50. Chor.

16

Da sprach die Hohenpriester der Juden zu Pi-la-to:

20

22

24

26

28

Nº 51. Recit.

2

ich ge-schrieben.

Nº 52. Choral.

6

Nº 53. Recit. Nº 54. Chor.

8

Da sprachen sie un-ter ein-an-der:

1

13

18

A 1

FLAUTO II.

22 B



27



32 C



38 D



43 E



48



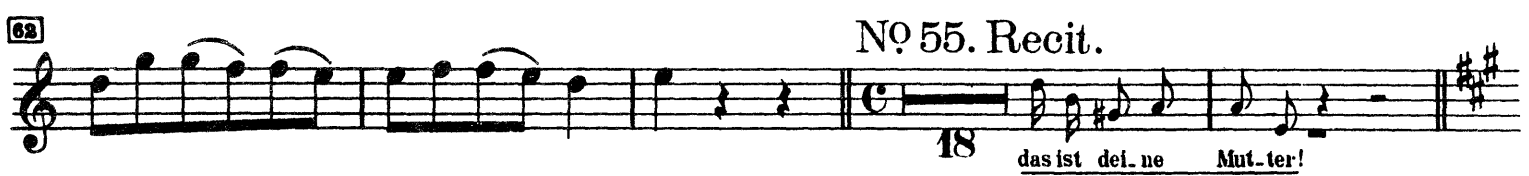
53 F



57



62 No 55. Recit.



18 das ist dei. ne Mut. ter!

No 56. Choral.



9



FLAUTO II.

Musical score for Flauto II, measures 56-124. The score is written in treble clef with a key signature of two flats (B-flat and E-flat). The time signature is 3/4. The piece is marked 'F' (Fugue) at measure 56 and 'G' (Gigue) at measure 74. The score includes various dynamics such as *p* (piano), *f* (forte), and *tr* (trill). There are also performance markings like '1' and '2' indicating first and second endings. The score ends with a trill and a first ending marking '1' at measure 124.

№ 64. Recitativ.

..... in welchen sie gestochen haben?'

FLAUTO II.

Nº 65. Choral.

Musical notation for No. 65 Choral, measures 1-12. The piece is in C major, common time. It features a melodic line with various ornaments and rests.

Nº 66. Recit.

23

Musical notation for No. 66 Recit., measures 1-23. The piece is in C major, common time. It features a recitative style with a melodic line and lyrics: *die weil das Grab na - he war.*

Nº 67. Chor.

1

p

Musical notation for No. 67 Chor., measures 1-47. The piece is in C major, 3/4 time. It features a complex melodic line with various ornaments, rests, and dynamic markings. The lyrics are: *die weil das Grab na - he war.*

FLAUTO II.

58