

Nicolai Rimsky-Korsakov
Symphony No. 2, Op. 9 (Antar)

Clarinet 1

I

Largo.
in A.

6 *pp* *pp*

1 *dim.* *pp*

2 *pp* *dimin.* *p*

3 *pp* *p*

4 *pp*

5 *pp*

16

6 *pp*

4

CLARINETTO I.

The musical score for Clarinet I consists of ten staves of music. The first staff begins with a treble clef, a key signature of three flats (B-flat, E-flat, A-flat), and a common time signature. It contains measures 7 through 12. The notation includes various rhythmic values, slurs, and dynamic markings: *crèsc.* and *poco* in the first staff; *poco* in the second staff; *f* in the third staff; *mf* and *pp* in the fourth staff; *p* in the fifth staff; and *pp* in the sixth staff. Measure numbers 7, 8, 9, 10, 11, and 12 are boxed and placed above their respective measures. The tempo marking *Largo. in tempo* is positioned above measure 9, and *Allegro.* is positioned above measure 10. The key signature changes to two sharps (F# and C#) at the beginning of measure 10. The time signature changes from common time to 6/8 at the beginning of measure 10. The score concludes with a double bar line at the end of measure 12.

CLARINETTO I.

Musical score for Clarinet I, measures 12 through 17. The score is written on a single staff in treble clef with a key signature of two sharps (F# and C#). Measure 12 begins with a dynamic marking of *pp* and includes a first ending bracket labeled '12' with a '4' above it. Measure 13 is marked *dolce Solo.* and begins with a first ending bracket labeled '13' and a '1' above it. Measure 14 is marked *Solo.* and *f*, starting with a first ending bracket labeled '14' and a '2' above it. Measure 15 is marked *pp* and begins with a first ending bracket labeled '15' and a '3' above it. Measure 16 is marked *cresc. poco dim.* and *p*, starting with a first ending bracket labeled '16'. Measure 17 is marked *mf* and begins with a first ending bracket labeled '17' and a '1' above it. The score concludes with a final measure marked *dimin.* and a first ending bracket labeled '3' with a '6' above it, ending on a double bar line with a 4/4 time signature.

CLARINETTO I.

18 Adagio. *in tempo*
dolce ed espressivo

in tempo
poco cresc.

19 Allegretto. (Tempo I.)
dim. *pp*

pp

20 Solo. *pp* **21** Largo. *pp*

22 *pp* *dimin.* *cresc.* *ff*

II

23 Allegro. *p* *cresc.*
 in B. 9

24 *ff* *dim.* *p*

CLARINETTO I.

24 *cresc.* *f* *ff* *dim.*

25 *f* *f*

26 *f* *f* *f* *ff*

27 *f* *f* *f* *ff*

28 *ff* *Meno mosso.* *cresc.* *dimin.* *mf*

29 *allarg.* *Tempo I.* *mf* *cresc.* *sf* *11* *p cresc.*

30 *f* *p cresc.* *ff*

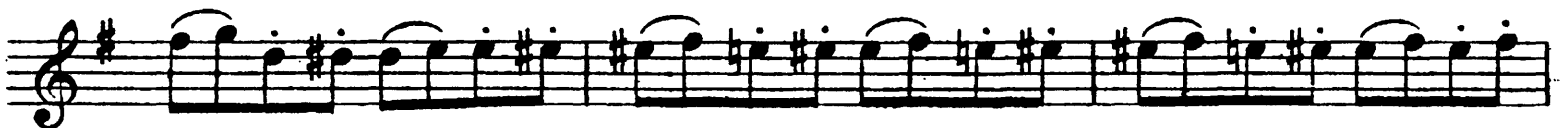
Detailed description: This page contains the musical score for the first clarinet part of the Antar movement from Rimsky-Korsakov's Symphony No. 2. The score is written in treble clef with a key signature of one sharp (F#). It consists of nine staves of music. The first staff (measures 24-25) begins with a *cresc.* marking and features a melodic line with a triplet of eighth notes. The second staff (measures 25-26) continues the melodic line with a *f* dynamic. The third staff (measures 26-27) shows a more active melodic line with a *f* dynamic. The fourth staff (measures 27-28) features a melodic line with a *f* dynamic. The fifth staff (measures 28-29) begins with a *ff* dynamic and a *Meno mosso.* tempo change, followed by a *cresc.* marking and a *dimin.* marking. The sixth staff (measures 29-30) starts with a *mf* dynamic and an *allarg.* marking, followed by a *Tempo I.* marking and a *cresc.* marking. The seventh staff (measures 30-31) begins with a *sf* dynamic and a *p cresc.* marking. The eighth staff (measures 31-32) features a melodic line with a *f* dynamic. The ninth staff (measures 32-33) continues the melodic line with a *ff* dynamic.

CLARINETTO I.

The musical score for Clarinet I consists of nine staves of music. The first staff begins with a treble clef, a key signature of one sharp (F#), and a 4/4 time signature. It features a triplet of eighth notes, followed by a half note, and then a series of eighth notes. Dynamic markings include *cresc.*, *ff*, and *p cresc.*. The second staff continues with a half note, a triplet of eighth notes, and four trills. Dynamic markings include *ff*, *p cresc.*, and *ff*. The third and fourth staves contain eighth notes with accents and slurs. The fifth and sixth staves continue with eighth notes and slurs. The seventh staff is marked with a box containing the number 31 and features triplet eighth notes with dynamic markings *p*. The eighth staff is marked with a box containing the number 32 and features quarter notes with dynamic markings *f* and *mf*. The ninth staff concludes with eighth notes and slurs.

CLARINETTO I.

33



34



35



3



36



CLARINETTO I.

Two staves of musical notation. The first staff begins with a treble clef, a key signature of one sharp (F#), and a dynamic marking of *p*. The melody consists of a series of quarter notes, followed by a quarter rest and a quarter note marked with a first ending bracket and the number '1'. The second staff continues the melody with a series of eighth notes, ending with a quarter rest.

III .

37 Allegro risoluto.
in A.

Seven staves of musical notation for measures 37-42. Measure 37 is marked with a dynamic of *f*. The music features a rhythmic pattern of eighth notes with slurs. Measure 38 is marked with a dynamic of *ff*. Measure 39 is marked with a dynamic of *p*. Measure 40 is marked with a dynamic of *p*. Measure 41 is marked with a dynamic of *p*. Measure 42 is marked with a dynamic of *p*. The notation includes various rhythmic values, slurs, and dynamic markings.

CLARINETTO I.

The musical score for Clarinet I consists of ten staves of music. The first staff begins with a treble clef, a key signature of one flat (B-flat), and a 4/4 time signature. It features a melodic line with slurs and accents, marked with *cresc.* and *ff*. The second staff continues this melodic line. The third staff contains measures 37 and 38, ending with a double bar line and a *pp* dynamic marking. The fourth staff begins with measure 39, marked with a boxed '39' and a 4/4 time signature. The fifth staff contains measure 40, marked with a boxed '40', *Solo.*, and *p*, featuring a triplet of eighth notes. The sixth staff continues the solo passage with triplets. The seventh staff continues the melodic line. The eighth staff begins with measure 41, marked with a boxed '41' and *p*, showing a key signature change to two sharps (D major). The ninth and tenth staves continue the melodic line in D major.

CLARINETTO I.

42

p

poco cresc.

43

mf

44 in B. $\frac{4}{4}$

45 in B. $\frac{4}{4}$

f ten. assai

CLARINETTO I.



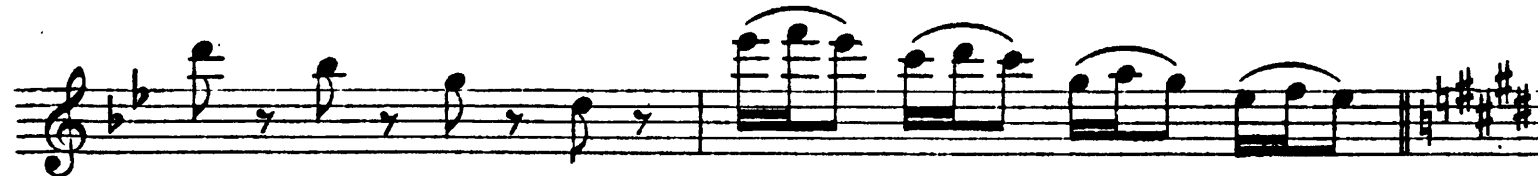
46



47



48



49

in A.



CLARINETTO I.

in A.

ff

50

51

p

cresc.

ff

The musical score for Clarinet I consists of two systems of staves. The first system contains measures 50 and 51. The second system contains measures 52 and 53. The music is written in a single treble clef with a key signature of one flat. The first system starts with a dynamic of *ff* and includes a box labeled '50'. The second system starts with a dynamic of *p* and includes a box labeled '51'. The third system ends with a dynamic of *ff*. The score includes various musical notations such as slurs, accents, and triplet markings.

CLARINETTO I.

Musical notation for Clarinet I, measures 51-52. The first staff shows measures 51 and 52. The second staff starts at measure 52 with a boxed number '52' and contains a melodic line with various accidentals.

Allegretto.

53 in B. **54** Adagio.

Musical notation for Clarinet I, measures 53-54. Measure 53 is in 6/8 time with a boxed number '53' and a finger number '14'. Measure 54 is in 2/4 time with a boxed number '54' and a finger number '1'. The dynamic marking *pp* is present.

Musical notation for Clarinet I, measures 54-55. The first staff shows measures 54 and 55. The second staff starts at measure 55 with a boxed number '55' and a finger number '14'. The dynamic marking *mf* is present.

Musical notation for Clarinet I, measures 55-56. The first staff shows measures 55 and 56. The second staff starts at measure 56 with a boxed number '56' and a finger number '1'. The dynamic marking *mf* is present. The word 'Solo.' is written above the staff.

Musical notation for Clarinet I, measures 56-57. The first staff shows measures 56 and 57. The second staff starts at measure 57 with a boxed number '57' and a finger number '5'. The dynamic marking *mf* is present.

Musical notation for Clarinet I, measures 57-58. The first staff shows measures 57 and 58. The second staff starts at measure 58 with a boxed number '58' and a finger number '5'. The dynamic marking *mf* is present.

Musical notation for Clarinet I, measures 58-59. The first staff shows measures 58 and 59. The second staff starts at measure 59 with a boxed number '59' and a finger number '5'. The dynamic marking *mf* is present.

Musical notation for Clarinet I, measures 59-60. The first staff shows measures 59 and 60. The second staff starts at measure 60 with a boxed number '60' and a finger number '5'. The dynamic marking *mf* is present. The word '(enharm.)' is written above the staff.

Musical notation for Clarinet I, measures 60-62. The first staff shows measures 60 and 61. The second staff starts at measure 61 with a boxed number '61' and a finger number '5'. The dynamic marking *mf* is present. The word '(enharm.)' is written above the staff.

CLARINETTO I.

Cor. ingl. Clar. I. 1 **63**

dim. *pp* **64** *pp*

65

cresc.

rit. molto **66** *a tempo* *ff* *dim.* *p*

rit. *a tempo* *tacet al fine.*

Nicolai Rimsky-Korsakov
Symphony No. 2, Op. 9 (Antar)

Clarinet 2

I.

Largo. 8 in A. 2 1 7 1

pp **pp** **p** **p** **pp** **cresc.** **poco** **a** **poco** **f** **f**

4 **4** **Allegro.** **16**

8 2 1 7 1 2 2 4 3 4 4 5 6 7 7 5

CLARINETTO II.

Largo. *in tempo*

8 *mf* 5 *pp* 7 9 *p*

10 Allegretto. 12 *p*

11 *pp* 4

12 *pp* 4 *pp* *pp* *pp*

13 8 14 *mf*

15 5 4 *f* *pp*

16 *dim.* *pp* *cresc. poco*

17 *mf*

Detailed description: This page contains the musical score for the Clarinet II part of the second movement of Rimsky-Korsakov's Symphony No. 2, Op. 9, 'Antar'. The score is written on ten staves of music. It begins at measure 8 with a dynamic of *mf*. The tempo is marked 'Largo. in tempo'. The key signature is two sharps (D major). The score includes various dynamics such as *pp*, *f*, and *dim.*, and articulation like accents and slurs. There are also performance markings like 'cresc. poco'. The score ends at measure 17 with a dynamic of *mf*. The tempo changes to 'Allegretto.' at measure 10. The key signature changes to one sharp (E major) at measure 10. The time signature changes to 6/8 at measure 10. The score includes several measures of rests and complex rhythmic patterns.

CLARINETTO II.

18 Adagio. *in tempo* 19 Allegretto.

20 5

21 Largo. 9 22 2

23 Allegro. 9 in B. II.

24 3 8

25 3

26 1 1

The musical score for Clarinet II consists of ten staves of music. The first two staves are in 7/8 time and end with a *f* dynamic followed by *dim.*. The third staff begins with a 3-measure rest, followed by a 10-measure rest, then *pp* dynamics and a 6-measure rest. The fourth staff starts with *pp* and a 5-measure rest. The fifth staff has a 9-measure rest, then *pp*, followed by a 2-measure rest, *p*, *cresc.*, and *f*. The sixth staff is marked *Allegro.* in B, with a 9-measure rest, *p*, *cresc.*, and *f*. The seventh staff has a 3-measure rest, *ff*, *dim.*, a 2-measure rest, *p*, and *cresc.*. The eighth staff has a 3-measure rest, *f*, *ff*, and *f*. The ninth staff has a 1-measure rest, *f*, and another 1-measure rest, *f*. The tenth staff has a 1-measure rest, *f*, and another 1-measure rest, *f*.

CLARINETTO II.

1

27

1

3

28 *Meno mosso*

mf *cresc.* *dim.*

29 *Tempo I.* 1

allarg. *mf* *cresc.* *sf* *p*

30

cresc. *ff* *p cresc.*

ff *p cresc.* *ff*

p cresc. *ff* *p cresc.*

tr

The musical score for Clarinet II consists of ten staves of music. The first staff begins with a first ending bracket (1) and features a series of eighth notes with accents and dynamic markings of *f*. The second staff contains measure 27, marked with a first ending bracket (1), and includes a *ff* dynamic. The third staff continues with eighth notes and accents, marked with *f* and *ff*. The fourth staff starts with a triplet of eighth notes, marked with *f* and *ff*. The fifth staff, measure 28, is marked *Meno mosso* and features a half note with *mf* and *cresc.*, followed by a half note with *dim.*. The sixth staff, measure 29, is marked *Tempo I.* and includes *allarg.*, *mf*, *cresc.*, *sf*, and *p*. The seventh staff, measure 30, features a half note with *cresc.* and *ff*, followed by a triplet of eighth notes with *p cresc.*. The eighth staff continues with a triplet of eighth notes marked *ff* and *p cresc.*. The ninth staff features a triplet of eighth notes marked *p cresc.*, *ff*, and *p cresc.*, with trills (*tr*) above the first four notes. The tenth staff concludes with eighth notes and accents.

CLARINETTO II.

Musical score for Clarinet II, measures 31-35. The score is written in treble clef with a key signature of one sharp (F#). The time signature is 4/4. The music features various rhythmic patterns, including eighth notes, quarter notes, and sixteenth notes, often grouped in beams. Measure 31 contains two triplet eighth notes, marked with a 'p' (piano) dynamic. Measure 32 features a sequence of quarter notes with first finger fingering (1) indicated above the notes, starting with a forte (f) dynamic and moving to mezzo-forte (mf). Measure 33 is a complex passage with many sixteenth notes, marked with a forte (f) dynamic. Measure 34 continues with sixteenth notes, marked with a piano (p) dynamic and a 'cresc. poco' (crescendo poco) instruction. Measure 35 begins with a forte (f) dynamic, followed by a mezzo-forte (mf) section, and ends with a fortissimo (ff) dynamic. The score concludes with a 'dim.' (diminuendo) instruction and a final note marked with a piano (p) dynamic.

CLARINETTO II.

3
p *cresc.*

36
ff *p* *pp*

3
pp

37 **Allegro risoluto.** III.
f

ff

38
p *cresc.*
ff

Detailed description: This page contains the musical score for Clarinet II, measures 36 through 38. The score is written in treble clef with a key signature of one sharp (F#). Measure 36 begins with a triplet of eighth notes, followed by a series of notes with dynamics *p* and *cresc.*. Measure 37 is marked **Allegro risoluto.** and **III.**, starting with a *ff* dynamic and a 4/4 time signature. It features a complex rhythmic pattern of eighth and sixteenth notes with many slurs. Measure 38 starts with a *p* dynamic and continues with a similar rhythmic pattern, ending with a *cresc.* marking. The page includes various performance instructions such as *ff*, *pp*, *f*, and *cresc.*.

CLARINETTO II.



39



40



41



42



43



in B.

CLARINETTO II.

44 45 in B. *f ten. assai*

ten.

ff

46 47 *mp* *p*

48 *poco cresc.* *mf*

49 in A. 7 in A. *ff*

Detailed description: This page contains the musical score for the second clarinet part of Rimsky-Korsakov's Symphony No. 2, Op. 9 (Antar). The score is written on ten staves. Measures 44-45 are in B major, with a 4/4 time signature. Measures 44-45 feature a melodic line with triplets and a dynamic marking of *f ten. assai*. Measures 46-47 are in B minor, with a 4/4 time signature, featuring a melodic line with a dynamic marking of *mp*. Measures 48-49 are in A major, with a 7/8 time signature, featuring a melodic line with a dynamic marking of *ff*. The score includes various musical notations such as triplets, slurs, and dynamic markings.

CLARINETTO II.

Musical score for Clarinet II, measures 50-52. The score is written on ten staves. Measure 50 is marked with a box containing the number 50. Measure 51 is marked with a box containing the number 51 and a first ending bracket. Measure 52 is marked with a box containing the number 52. The music features various rhythmic patterns, including triplets and sixteenth notes. Dynamic markings include *cresc.*, *sf*, and *p*. The key signature is one flat (B-flat major or D minor).

CLARINETTO II.

IV.

Allegretto. in B. Adagio. **1**

53 14 **54**

55 17 **56** in A. 14

57

pp

cresc.

poco *a* *poco*

f

CLARINETTO II.

1 Solo *espress.*

in B. [59] 11 [60] 14 [61] 12 [62] 8 in B.

1 [63] 6 [64] *mf dim. pp pp*

[65] *cresc.*

riten. molto [66] *ff dim. tacet al fine.*

Detailed description: This page contains the musical score for Clarinet II, measures 58 through 66. The score is written on ten staves. Measure 58 begins with a treble clef, a key signature of one flat (B-flat), and a 4/4 time signature. It features a melodic line with a 'Solo' marking and 'espress.' dynamics. Measure 59 is marked 'in B.' and contains a double bar line. Measures 60-62 continue the melodic line with various dynamics including 'mf', 'dim.', and 'pp'. Measure 63 starts with a new melodic phrase. Measure 64 continues this phrase. Measure 65 features a 'cresc.' marking and a series of slurs. Measure 66 concludes with a 'riten. molto' marking, a 'ff' dynamic, and a 'tacet al fine.' instruction.