

Franz Liszt
Hungarian Rhapsody No. 3

Clarinete I^{mo} in A.

Tempo giusto. (quasi Allegro)

f

p

mf

f

ff

p

p

p

p

p

f

2.

Allegro

Andante quasi Adagio

Solo

rit.

Allegro non troppo

rit.

Allegro non troppo

in B. $\frac{7}{8}$ **G** $\frac{2}{4}$ Clar. I

Clar. I *a tempo*

p

Liszt — Hunagrian Rhapsody No. 3

Orchestra Musician's
CD-ROM LIBRARY

4

Clarinete I



String.



Franz Liszt
Hungarian Rhapsody No. 3

Tempo giusto (quasi Allegro)

The image displays the first section of Franz Liszt's Hungarian Rhapsody No. 3, marked 'Tempo giusto (quasi Allegro)'. It consists of ten staves of music in 2/4 time, written in G major. The notation includes various dynamics such as *f*, *pp*, and *ff*, and features complex rhythmic patterns with many sixteenth notes. A first ending bracket is present on the sixth staff. The section concludes with a double bar line and a repeat sign.

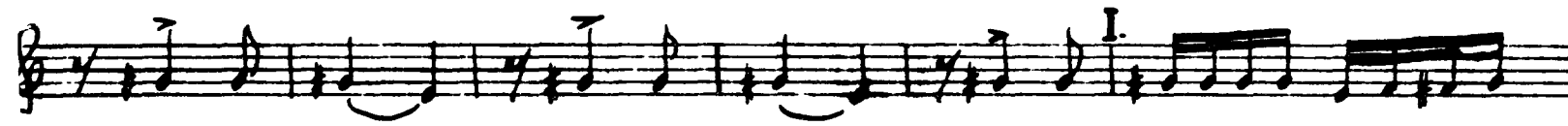
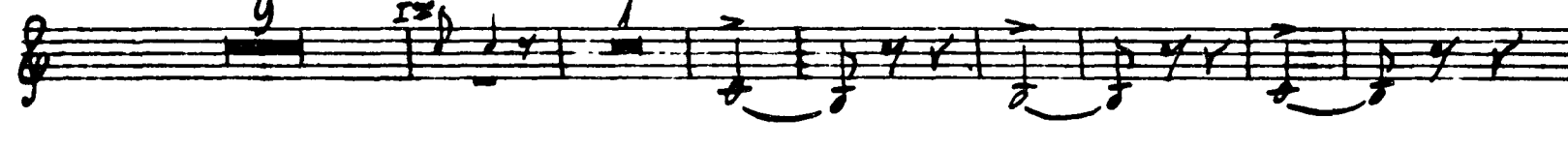
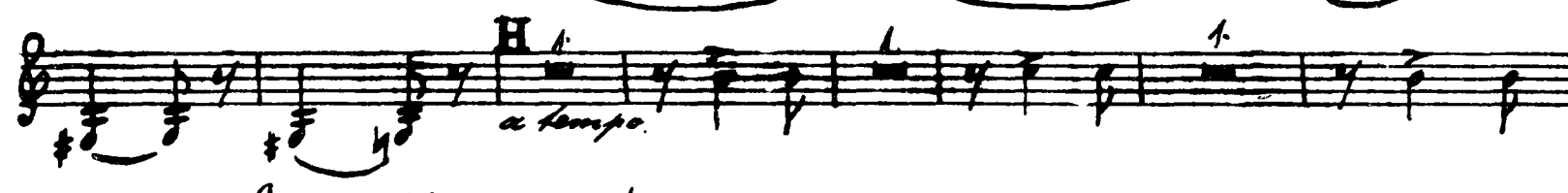
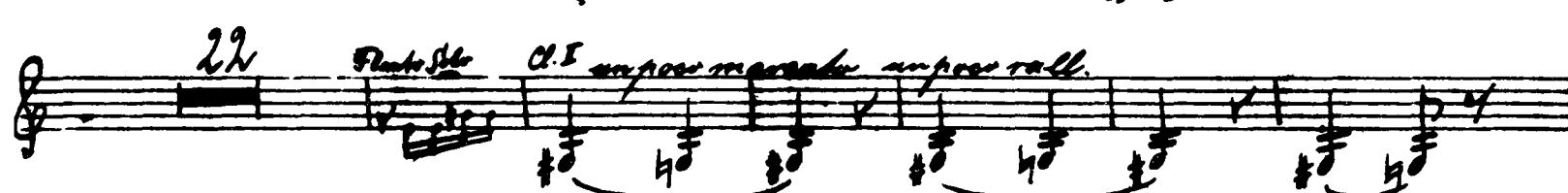
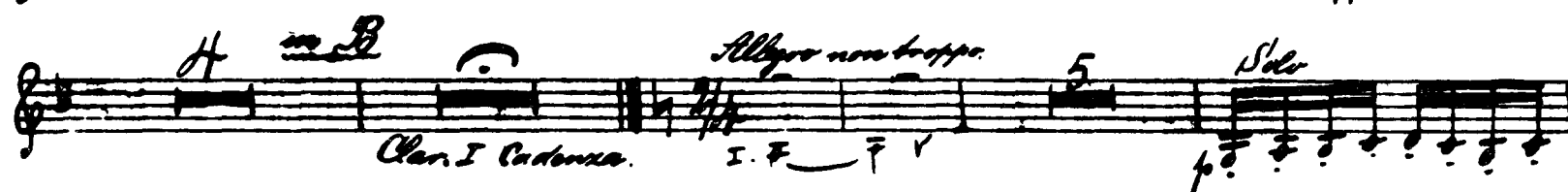
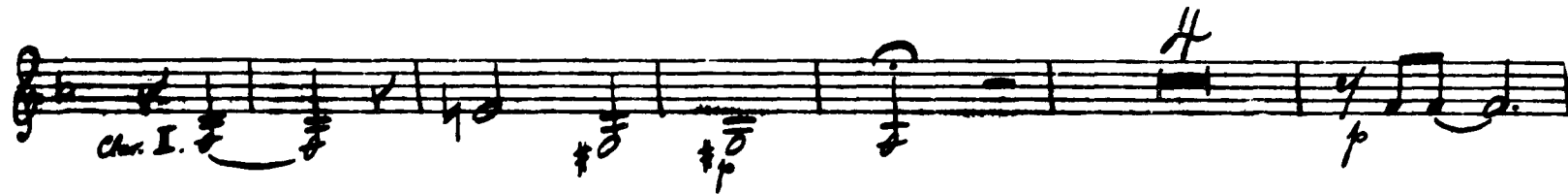
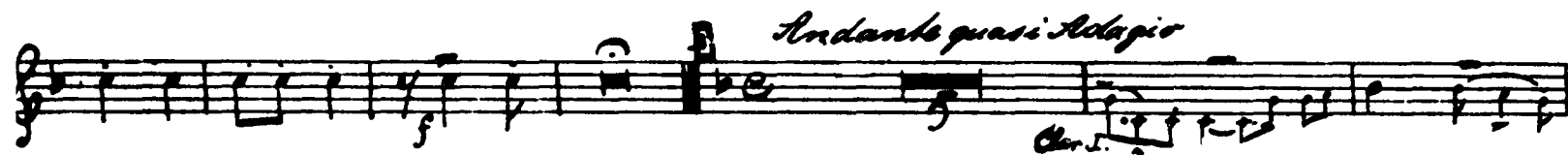
Andantino marcato

The second section of the score is marked 'Andantino marcato' and begins with a C-clef. It consists of four staves of music in 2/4 time, written in G major. The tempo is slower than the first section. The notation includes dynamics like *mf* and *f*. A first ending bracket is present on the second staff. The section concludes with a double bar line and a repeat sign.

Andantino marcato

The third section of the score is marked 'Andantino marcato' and begins with a D-clef. It consists of four staves of music in 2/4 time, written in G major. The tempo is slower than the first section. The notation includes dynamics like *f* and *pp*. A first ending bracket is present on the second staff. The section concludes with a double bar line and a repeat sign.

Clar. I.



Clar. II.

This page contains the musical score for the Clarinet II part of Liszt's Hungarian Rhapsody No. 3. The score is written on ten staves of music. The first staff begins with a treble clef, a key signature of one sharp (F#), and a 2/4 time signature. The music is characterized by rapid sixteenth-note passages and dynamic markings such as *f* (forte) and *ff* (fortissimo). The second staff includes fingering numbers 1 through 7 above the notes. The score continues with various rhythmic patterns, including eighth and sixteenth notes, and rests. A key signature change to one flat (Bb) occurs in the eighth staff, marked with a 'K'. The piece concludes with a double bar line on the tenth staff.