

# George Friederich Handel Israel in Egypt

## Fagotto I/II

## Erster Teil

„Der Auszug“

Recitativo: tacet

4 Tenore

Arbit, oh! Erbarmen, ohne Gnade

## Nr. 1 Coro

Largo

Viol. I

mf

14

19

23

f

29

33

37

1

2

# Fagotto I/II

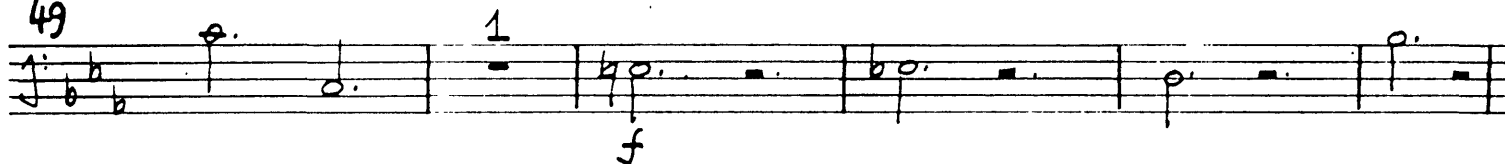
42



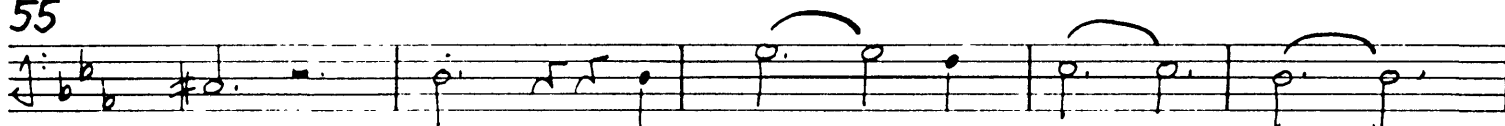
45



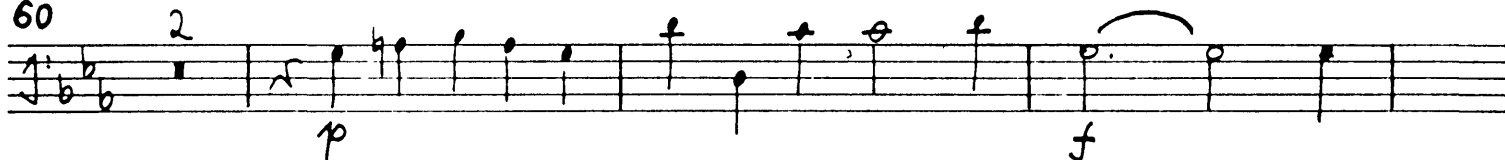
49



55



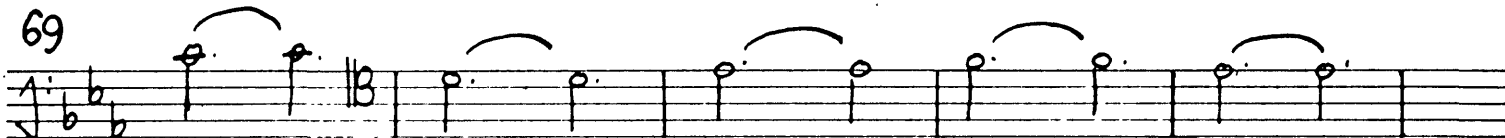
60



65



69



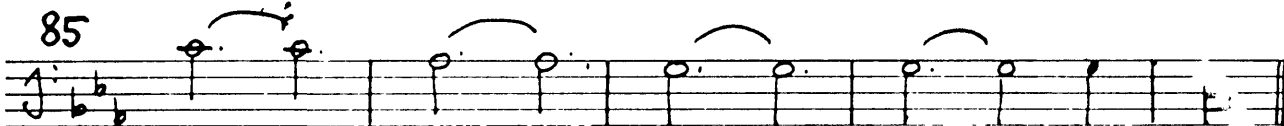
74



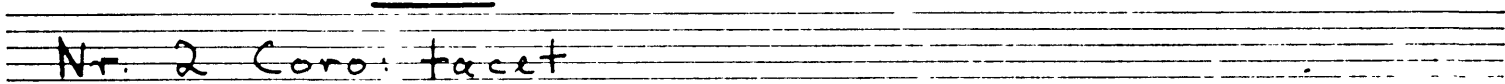
79



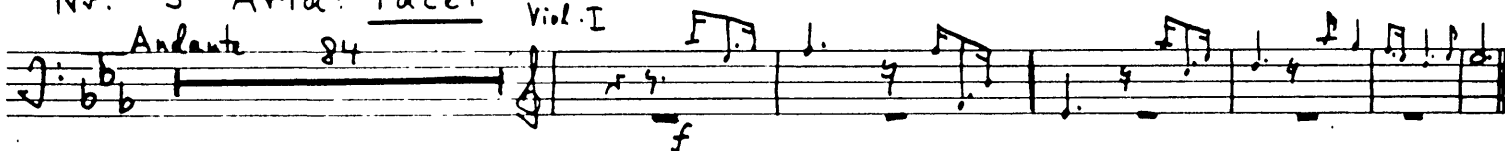
85



Recitativo: tacet



Nr. 3 Aria: tacet



Fagotto I/II

Nr. 4 Coro

*Andante larghetto*

1  
f  
2  
mf  
12  
f  
19  
4  
24  
3  
ff  
33  
34  
mf  
37  
ff  
41

Nr. 5 Coro

*Allergo*

p  
6  
3  
v. s.

4

Fagotto I/II

10 *simile*

14 *mf*

19 *ff*

24

28

33

38

43

48

53

58

63

Detailed description: This is a page of musical notation for the Bassoon I/II part of George Frideric Handel's 'Israel in Egypt'. The score consists of ten staves of music, each beginning with a measure number. The notation includes various rhythmic values, slurs, and dynamic markings. The first staff (measures 10-13) starts with a 'simile' marking. The second staff (measures 14-18) includes a first ending bracket and a 'mf' dynamic. The third staff (measures 19-23) features a 'ff' dynamic. The fourth staff (measures 24-27) continues the melodic line. The fifth staff (measures 28-32) shows a more active melodic passage. The sixth staff (measures 33-37) continues with similar rhythmic patterns. The seventh staff (measures 38-42) features a series of eighth notes. The eighth staff (measures 43-47) includes a first ending bracket and a 'b' (flat) marking. The ninth staff (measures 48-52) continues the melodic development. The tenth staff (measures 53-57) features a series of eighth notes. The eleventh staff (measures 58-62) includes a first ending bracket and a 'b' (flat) marking. The final staff (measures 63-66) concludes the passage with a series of eighth notes.

68 *Fagotto I/II*

73

77

83

88

Detailed description: This block contains five staves of musical notation for the Fagotto I/II part. The music is in a single system with a treble clef and a common time signature. It features a melodic line with various ornaments (trills and mordents) and phrasing slurs. Measure numbers 68, 73, 77, 83, and 88 are clearly marked at the beginning of their respective staves.

Nr. 6 Coro  
*Largo*

I

II

I

II

12

I

II

Detailed description: This block contains musical notation for the Coro part, numbered 6. It is marked 'Largo' and consists of four systems of staves. Each system has two staves labeled 'I' and 'II'. The notation includes various notes, rests, and phrasing slurs. The first system starts with a 'pp' dynamic marking. The second system has a '6' above the first staff. The third system starts with a '12' above the first staff. The music is in a single system with a treble clef and a common time signature.

6

### Fagotto I/II

20

I/II

28

I

II

34

I

II

### Nr. 7 Coro

A tempo giusto, e staccato

I

II

8

I

II

12

I/II

16

Fagotto I/II

This musical score for Fagotto I/II consists of ten staves of music, numbered 20 through 68. The notation is in treble clef with a key signature of one sharp (F#). The music features various rhythmic values including eighth and sixteenth notes, often grouped with slurs and accents. Dynamic markings such as *mf*, *f*, and *p* are placed throughout the score. First and second endings are indicated by '1' and '2' above the notes at measures 50 and 68 respectively. The score concludes with a double bar line at the end of measure 68.

### Fagotto I / II

Nr. 8  
Andante

I/II

I

II

I

II

I

II



Fagotto I / II

38

I

II

45

I

II

50

I

II

Ob. I

8

Ob. I

mf

62

68

74

80

86

93

V. S

Fagotto I/II

99

105

111

118

123

130

139

144

150

156

161

167

# Fagotto I/II

Nr. 9 Coro  
A tempo giusto

Vcl. Cb.

|||

I/II

10

*p*

15

20

25

30

34

*f*

38

4

46

50

54

58

64

69

12

Nr. 10 Coro  
grave, e staccato

Fagotto I/II

I

ff

2

II

6

A tempo giusto

I

p

II

11

I/II

15

19

21

mf

24

27

29

32

Fagotto I/I

35

38

Tempo giusto

35

Nr. 11 Coro  
grave

I

II

6

II

11

Larghetto

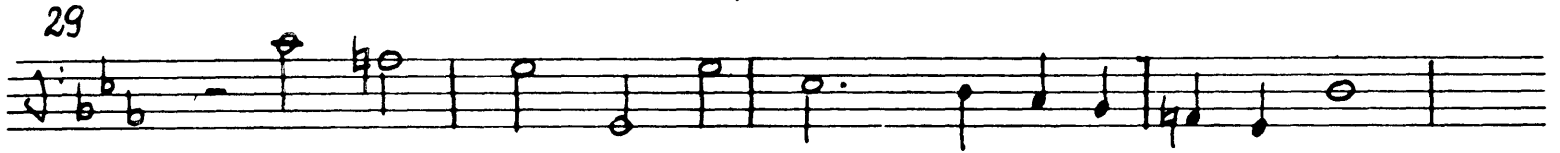
II

15

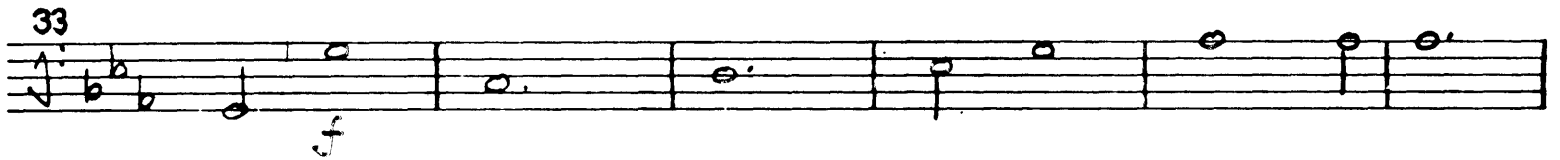
20

# Fagotto I/II

29



33



39

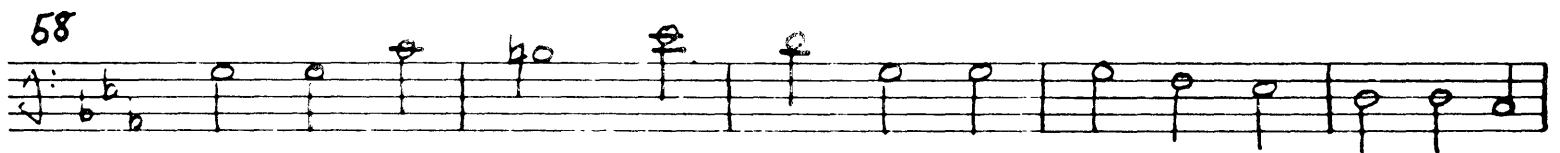


48



53

58



63



68



73



# Fagotto I/II

## Zweiter Teil

"Der Gesang Moses"

### No 12 Introitus - Coro

A tempo giusto

Viol. I

ff

14

18

23

A tempo giusto

Viol. I

33

f

37

41

44

50

54

1

3

Fagotto I/II

Musical score for Bassoon I/II, measures 62-88. The score is written in bass clef with a key signature of one flat (B-flat). The time signature is 3/4. The music consists of several lines of notes, including rests, slurs, and dynamic markings such as *ff* (fortissimo) and *mf* (mezzo-forte). Measure numbers 62, 66, 69, 72, 75, 79, 82, 85, and 88 are indicated at the beginning of their respective lines. A first ending bracket is shown above measure 62.

Nr. 13 Duetto: tacet

Larghetto

Musical score for Violin I, measures 49-50. The score is written in treble clef with a key signature of one flat (B-flat) and a time signature of 3/4. Measure 49 is a whole rest. Measure 50 contains a melodic line starting with a slur. The tempo marking *Larghetto* is indicated above the staff.



Nr. 14 Coro  
Grave

Fagotto I/II

I/II

6

11

tacet bis Schluss des Chores

Nr. 15 Duetto  
Andante allegro

Viol. I

I/II

7

15

22

28

34

39

47

Fagotto I / II

52 6 Viol. I

mp

63

f p

73

f

80

f

87

f

94

mf

99

mf

104

mf

Handwritten musical score for Violin I and Bass I, measures 115-239. The score is written on ten staves. The key signature is one sharp (F#) and the time signature is 3/4. The score includes various dynamics (p, f, mf, pp), articulations (accents, slurs), and performance instructions such as "allargando" and "a tempo".

Measures 115-130: Violin I part, starting with a *p* dynamic. Measure 115 is marked with a "15" above the staff. Measure 130 is marked with a "1" above the staff.

Measures 137-145: Continuation of the Violin I part. Measure 145 is marked with a "1" above the staff.

Measures 155-176: Continuation of the Violin I part. Measure 155 is marked with a "1" above the staff. Measure 176 is marked with a "5" above the staff and "allargando".

Measures 176-190: Continuation of the Violin I part. Measure 190 is marked with a "1" above the staff and "a tempo".

Measures 190-206: Continuation of the Violin I part. Measure 206 is marked with a "7" above the staff.

Measures 206-219: Continuation of the Violin I part. Measure 219 is marked with a "7" above the staff.

Measures 219-228: Continuation of the Violin I part. Measure 228 is marked with a "3" above the staff.

Measures 228-234: Continuation of the Violin I part. Measure 234 is marked with a "2" above the staff.

Measures 234-239: Continuation of the Violin I part. Measure 239 is marked with a "p" dynamic and a "tr" (trill) above the staff.

Measures 115-130: Bass I part, starting with a *f* dynamic. Measure 115 is marked with a "15" above the staff. Measure 130 is marked with a "1" above the staff.

Measures 137-145: Continuation of the Bass I part. Measure 145 is marked with a "1" above the staff.

Measures 155-176: Continuation of the Bass I part. Measure 155 is marked with a "1" above the staff. Measure 176 is marked with a "5" above the staff and "allargando".

Measures 176-190: Continuation of the Bass I part. Measure 190 is marked with a "1" above the staff and "a tempo".

Measures 190-206: Continuation of the Bass I part. Measure 206 is marked with a "7" above the staff.

Measures 206-219: Continuation of the Bass I part. Measure 219 is marked with a "7" above the staff.

Measures 219-228: Continuation of the Bass I part. Measure 228 is marked with a "3" above the staff.

Measures 228-234: Continuation of the Bass I part. Measure 234 is marked with a "2" above the staff.

Measures 234-239: Continuation of the Bass I part. Measure 239 is marked with a "p" dynamic and a "tr" (trill) above the staff.

Additional markings: "Viol. I, I" is written above the first staff. "Basso I" is written above the second staff. "Ren all' im Schief-" is written below the second staff.

Fagotto I/II

244

249

Nr. 16 Coro  
Largo

I/II

5

9

13

17

Nr. 17 Coro  
Andante

I/II

4

8

Fagotto I/II

13

18

21

24

27

31

34

36 Adagio

41

44

80

85

-brack auf, - er brack

### Fagotto I/II

96

101

106

112

118

124

Nr. 18 Coro: tacet

Nr. 19 Aria: tacet

Viol. I

Nr. 20 Aria

*Andante larghetto*

I

Fagotto I / II

Musical score for Fagotto I/II, measures 6-32. The score is written on ten staves. The key signature is B-flat major (two flats). The time signature is 3/4. The piece begins with a dynamic marking of *p* (piano) at measure 6. The notation includes various rhythmic values, including eighth and sixteenth notes, and rests. There are several first endings marked with a '1' above the staff. The score concludes at measure 32 with a final cadence.

24

Fagotto I/II

34

36

Nr. 21 Coro

grave

I

II

5

I

II

10

I

II

15

I

II

17

Allergro

II



Fagotto I/II

Musical score for Fagotto I/II, measures 22-55. The score is written on a single staff with a treble clef and a key signature of one sharp (F#). The time signature is 3/4. The piece begins at measure 22 with a dynamic marking of *mf*. The notation includes various note values, rests, and articulation marks. Measure numbers 22, 32, 39, 45, 50, and 55 are indicated at the start of their respective lines. A first ending bracket is shown above measures 32-38, and a second ending bracket is shown above measures 39-44. The piece concludes at measure 55 with a double bar line.

Nr. 22 Duetto: tacet

Larghetto

Viol. I

Musical score for Nr. 22 Duetto: tacet, Viol. I. The score is written on a single staff with a treble clef and a key signature of one sharp (F#). The time signature is 3/4. The piece begins with a *tacet* marking and a first ending bracket above measures 1-12. The notation includes various note values and rests. The piece concludes with a double bar line.

Nr. 23 Coro

Larghetto, e staccato

Musical score for Nr. 23 Coro, Viol. I and II. The score is written on two staves, labeled I and II, with a treble clef and a key signature of one sharp (F#). The time signature is common time (C). The piece begins with a *mf* dynamic marking. The notation includes various note values and rests. The piece concludes with a double bar line.

Fagotto I/II

10

I

II

f

p

14

I

II

f

19

24

I

II

f

p

27

I

II

p

30

I

II

f

5

p.

38

41

I

II

mf

p

47

Fagotto I/II

49

*f*

53

*p*

57

*ff*

64

*mf*

68

*f*

74

*mf*

78

*f*

82

*mf*

87

*f*

91

*f*

95

*mf*

### Fagotto I / II

100

### Nr. 24 Aria: tacet

Largo, e mezzo piano

105

### Nr. 25 Coro

A tempo giusto

I

4

8

13

### Recitativo: tacet

6 Tenore Cont.

völlig trockenem Land. f

Da capo Nr. 25

### Recitativo: tacet

5 Tenore Cont.

und Mirjam vor Künderte laut: f

Fagotto I/II

Nr. 26 Coro sopr. I  
A tempo giusto

I/II

wün-der-bar f

6 12 21 29 31 35 38 41 46 49 53 59

Fagotto I/II

63

ff

66

69

mf

72

76

ff

78

81

84